

G β 2 (G-14): sc-25018



The Power to Question

BACKGROUND

Heterotrimeric G proteins function to relay information from cell surface receptors to intracellular effectors. Each of a very broad range of receptors specifically detects an extracellular stimulus (i.e. a photon, pheromone, odorant, hormone or neurotransmitter), while the effectors (e.g. adenylyl cyclase), which act to generate one or more intracellular messengers, are less numerous. In mammals, G protein α , β and γ polypeptides are encoded by at least 16, 4 and 7 genes, respectively. Most interest in G proteins has been focused on their α subunits, since these proteins bind and hydrolyze GTP and most obviously regulate the activity of the best studied effectors. Evidence, however, has established an important regulatory role for the $\beta\gamma$ subunits. The G protein β subunits are important regulators of G protein α subunits as well as of certain signal transduction receptors and effectors. In mammals, there are five different members of the β subunit family

REFERENCES

- Blatt, C., et al. 1988. Chromosomal localization of genes encoding guanine nucleotide-binding protein subunits in mouse and human. *Proc. Nat. Acad. Sci.* 85: 7642-7646.
- Gautam, N., et al. 1990. G protein diversity is increased by associations with a variety of γ subunits. *Proc. Natl. Acad. Sci. USA* 87: 7973-7977.
- Simon, M.I., et al. 1991. Diversity of G proteins in signal transduction. *Science* 252: 802-808.
- von Weizsäcker, E., et al. 1992. Diversity among the β subunits of heterotrimeric GTP-binding proteins: characterization of a novel β subunit cDNA. *Biochem. Biophys. Res. Commun.* 183: 350-356.
- Kleuss, C., et al. 1992. Different β subunits determine G protein interaction with transmembrane receptors. *Nature* 358: 424-426.
- Blank, J.L., et al. 1992. Activation of cytosolic phosphoinositide phospholipase C by G protein $\beta\gamma$ subunits. *J. Biol. Chem.* 267: 23069-23075.
- Hurowitz, E.H., et al. 2000. Genomic characterization of the human heterotrimeric G protein α , β and γ subunit genes. *DNA Res.* 7: 111-120.

CHROMOSOMAL LOCATION

Genetic locus: GNB2 (human) mapping to 7q22; Gnb2 (mouse) mapping to 5 G2.

SOURCE

G β 2 (G-14) is an affinity purified goat polyclonal antibody raised against a peptide mapping within an internal region of G β 2 of human origin.

PRODUCT

Each vial contains 200 μ g IgG in 1.0 ml of PBS with < 0.1% sodium azide and 0.1% gelatin.

Blocking peptide available for competition studies, sc-25018 P, (100 μ g peptide in 0.5 ml PBS containing < 0.1% sodium azide and 0.2% BSA).

RESEARCH USE

For research use only, not for use in diagnostic procedures.

APPLICATIONS

G β 2 (G-14) is recommended for detection of G β 2 of mouse, rat and human origin by Western Blotting (starting dilution 1:200, dilution range 1:100-1:1000), immunoprecipitation [1–2 μ g per 100–500 μ g of total protein (1 ml of cell lysate)], immunofluorescence (starting dilution 1:50, dilution range 1:50-1:500) and solid phase ELISA (starting dilution 1:30, dilution range 1:30-1:3000).

Suitable for use as control antibody for G β 2 siRNA (h): sc-41764 and G β 2 siRNA (m): sc-41765.

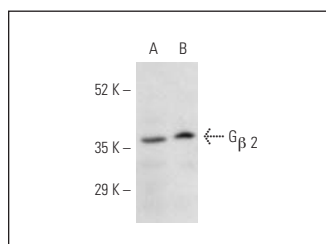
Molecular Weight of G β 2: 36 kDa.

Positive Controls: rat brain extract: sc-2392 or mouse brain extract: sc-2253.

RECOMMENDED SECONDARY REAGENTS

To ensure optimal results, the following support (secondary) reagents are recommended: 1) Western Blotting: use donkey anti-goat IgG-HRP: sc-2020 (dilution range: 1:2000-1:100,000) or Cruz Marker™ compatible donkey anti-goat IgG-HRP: sc-2033 (dilution range: 1:2000-1:5000), Cruz Marker™ Molecular Weight Standards: sc-2035, TBS Blotto A Blocking Reagent: sc-2333 and Western Blotting Luminol Reagent: sc-2048. 2) Immunoprecipitation: use Protein A/G PLUS-Agarose: sc-2003 (0.5 ml agarose/2.0 ml). 3) Immunofluorescence: use donkey anti-goat IgG-FITC: sc-2024 (dilution range: 1:100-1:400) or donkey anti-goat IgG-TR: sc-2783 (dilution range: 1:100-1:400) with UltraCruz™ Mounting Medium: sc-24941.

DATA



G β 2 (G-14): sc-25018. Western blot analysis of G β 2 expression in mouse brain (A) and rat brain (B) tissue extracts.

STORAGE

Store at 4° C, **DO NOT FREEZE**. Stable for one year from the date of shipment. Non-hazardous. No MSDS required.

PROTOCOLS

See our web site at www.scbt.com or our catalog for detailed protocols and support products.