

# G<sub>β</sub> (M-14): sc-261

## BACKGROUND

Heterotrimeric G proteins function to relay information from cell surface receptors to intracellular effectors. Each of a very broad range of receptors specifically detects an extracellular stimulus (i.e. a photon, pheromone, odorant, hormone or neurotransmitter), while the effectors (e.g. adenylyl cyclase), which act to generate one or more intracellular messengers, are less numerous. In mammals, G protein  $\alpha$ ,  $\beta$  and  $\gamma$  polypeptides are encoded by at least 16, 4 and 7 genes, respectively. Most interest in G proteins has been focused on their  $\alpha$  subunits, since these proteins bind and hydrolyze GTP and most obviously regulate the activity of the best studied effectors. Evidence, however, has established an important regulatory role for the  $\beta\gamma$  subunits. The G protein  $\beta$  subunits are important regulators of G protein  $\alpha$  subunits as well as of certain signal transduction receptors and effectors. In mammals, there are five different members of the  $\beta$  subunit family

## REFERENCES

- Blatt, C., et al. 1988. Chromosomal localization of genes encoding guanine nucleotide-binding protein subunits in mouse and human. *Proc. Natl. Acad. Sci. USA* 85: 7642-7646.
- Gautam, N., et al. 1990. G protein diversity is increased by associations with a variety of  $\gamma$  subunits. *Proc. Natl. Acad. Sci. USA* 87: 7973-7977.
- Simon, M.I., et al. 1991. Diversity of G proteins in signal transduction. *Science* 252: 802-808.
- von Weizsäcker, E., et al. 1992. Diversity among the  $\beta$  subunits of heterotrimeric GTP-binding proteins: characterization of a novel  $\beta$  subunit cDNA. *Biochem. Biophys. Res. Commun.* 183: 350-356.
- Kleuss, C., et al. 1992. Different  $\beta$  subunits determine G protein interaction with transmembrane receptors. *Nature* 358: 424-426.

## SOURCE

G<sub>β</sub> (M-14) is an affinity purified rabbit polyclonal antibody raised against a peptide mapping within a conserved domain at the N-terminus of G<sub>β1</sub> of bovine origin.

## PRODUCT

Each vial contains 200  $\mu$ g IgG in 1.0 ml of PBS with < 0.1% sodium azide and 0.1% gelatin.

Blocking peptide available for competition studies, sc-261 P, (100  $\mu$ g peptide in 0.5 ml PBS containing < 0.1% sodium azide and 0.2% BSA).

Available as agarose conjugate for immunoprecipitation, sc-261 AC, 500  $\mu$ g/0.25 ml agarose in 1 ml.

## STORAGE

Store at 4° C, **\*\*DO NOT FREEZE\*\***. Stable for one year from the date of shipment. Non-hazardous. No MSDS required.

## RESEARCH USE

For research use only, not for use in diagnostic procedures.

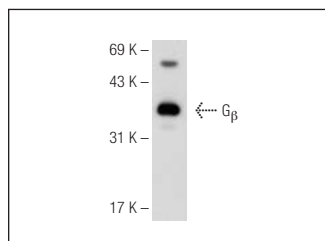
## APPLICATIONS

G<sub>β</sub> (M-14) is recommended for detection of G<sub>β1</sub>, G<sub>β2</sub>, G<sub>β3</sub> and G<sub>β4</sub> of mouse, rat, human and bovine origin by Western Blotting (starting dilution 1:200, dilution range 1:100-1:1000), immunoprecipitation [1–2  $\mu$ g per 100–500  $\mu$ g of total protein (1 ml of cell lysate)], immunofluorescence (starting dilution 1:50, dilution range 1:50-1:500) and solid phase ELISA (starting dilution 1:30, dilution range 1:30-1:3000).

Molecular Weight of G<sub>β</sub>: 36 kDa.

Positive Controls: Jurkat whole cell lysate: sc-2204, SK-N-SH cell lysate: sc-2410 or Y79 cell lysate: sc-2240.

## DATA



G<sub>β</sub> (M-14): sc-261. Western blot analysis of G<sub>β</sub> expression in Y79 whole cell lysate.

## SELECT PRODUCT CITATIONS

- Langhans-Rajasekaran, S.A., et al. 1995. Activation of Tsk and Btk Tyrosine kinases by G protein  $\beta\gamma$  subunits. *Proc. Natl. Acad. Sci. USA* 92: 8601-8605.
- Schandar, M., et al. 1998. Odorants selectively activate distinct G protein subtypes in olfactory cilia. *J. Biol. Chem.* 273: 16669-16677.
- Asano, T., et al. 1999. Selective association of G protein  $\beta$ -4 with  $\gamma$ -5 and  $\gamma$ -12 subunits in bovine tissues. *J. Biol. Chem.* 274: 21425-21429.
- Cook, T.A., et al. 2001. The  $\delta$  subunit of type 6 phosphodiesterase reduces light-induced cGMP hydrolysis in rod outer segments. *J. Biol. Chem.* 276: 5248-5255.
- Oh, P., et al. 2001. Segregation of heterotrimeric G proteins in cell surface microdomains. G<sub>q</sub> binds caveolin to concentrate in caveolae, whereas G<sub>i</sub> and G<sub>s</sub> target lipid rafts by default. *Mol. Biol. Cell.* 12: 685-698.
- Guillard, C., et al. 2003. Activation of the mitogen-activated protein kinases Erk 1/2 by erythropoietin receptor via a G<sub>i</sub> protein  $\beta\gamma$  subunit-initiated pathway. *J. Biol. Chem.* 278: 11050-11056.
- Little, K.D., et al. 2004. Dynamic regulation of a GPCR-tetraspanin-G protein complex on intact cells: central role of CD81 in facilitating GPR56-G $\alpha_{q/11}$  association. *Mol. Biol. Cell.* 15: 2375-2387.
- Akekawatchai, C., et al. 2005. Transactivation of CXCR4 by the Insulin-like growth factor-1 receptor (IGF-IR) in human MDA-MB-231 breast cancer epithelial cells. *J. Biol. Chem.* 280: 39701-39708.
- Moussaif, M., et al. 2006. Phototransduction in a transgenic mouse model of Nougaret night blindness. *J. Neurosci.* 26: 6863-6872.