

LRRFIP2 (D-17): sc-100025

BACKGROUND

Leucine-rich repeats (LRRs) are 20-30 amino acid motifs that mediate protein-protein interactions. The primary function of these motifs is to provide a versatile structural framework for the formation of these protein-protein interactions. LRRs are present in a variety of proteins with diverse structure and function, including innate immunity and nervous system development. Several human diseases are associated with mutations in the genes encoding LRR-containing proteins. LRRFIP2 (leucine-rich repeat flightless-interacting protein 2), also known as HUF1-2, is a 721 amino acid protein that belongs to the LRRFIP family. Ubiquitously expressed, LRRFIP2 acts as an activator of the Wnt signaling pathway and as a positive regulator of NF κ B activity. LRRFIP2 may be involved in regulating cytokine production in macrophages, suggesting a functional role in the TLR4-mediated inflammatory response. Three isoforms of LRRFIP2 exist due to alternative splicing events.

REFERENCES

- Fong, K.S. and de Couet, H.G. 1999. Novel proteins interacting with the leucine-rich repeat domain of human flightless-1 identified by the yeast two-hybrid system. *Genomics* 58: 146-157.
- Liu, J., et al. 2005. Identification of the Wnt signaling activator leucine-rich repeat in Flightless interaction protein 2 by a genome-wide functional analysis. *Proc. Natl. Acad. Sci. USA* 102: 1927-1932.
- Wang, T., et al. 2006. Flightless 1 homolog negatively modulates the TLR pathway. *J. Immunol.* 176: 1355-1362.
- Dolan, J., et al. 2007. The extracellular leucine-rich repeat superfamily; a comparative survey and analysis of evolutionary relationships and expression patterns. *BMC Genomics* 8: 320.
- Ko, J. and Kim, E. 2007. Leucine-rich repeat proteins of synapses. *J. Neurosci. Res.* 85: 2824-2832.
- Bella, J., et al. 2008. The leucine-rich repeat structure. *Cell. Mol. Life Sci.* 65: 2307-2333.
- Thorsen, K., et al. 2008. Alternative splicing in colon, bladder, and prostate cancer identified by exon array analysis. *Mol. Cell. Proteomics* 7: 1214-1224.
- Meyer, C., et al. 2009. An interstitial deletion at 3p21.3 results in the genetic fusion of MLH1 and ITGA9 in a Lynch syndrome family. *Clin. Cancer Res.* 15: 762-769.
- Dai, P., et al. 2009. Modulation of TLR signaling by multiple MyD88-interacting partners including leucine-rich repeat Fli-1-interacting proteins. *J. Immunol.* 182: 3450-3460.

CHROMOSOMAL LOCATION

Genetic locus: LRRFIP2 (human) mapping to 3p22.2; Lrrfip2 (mouse) mapping to 9 F3.

SOURCE

LRRFIP2 (D-17) is an affinity purified goat polyclonal antibody raised against a peptide mapping within an internal region of LRRFIP2 of human origin.

PRODUCT

Each vial contains 200 μ g IgG in 1.0 ml of PBS with < 0.1% sodium azide and 0.1% gelatin.

Blocking peptide available for competition studies, sc-100025 P, (100 μ g peptide in 0.5 ml PBS containing < 0.1% sodium azide and 0.2% BSA).

APPLICATIONS

LRRFIP2 (D-17) is recommended for detection of LRRFIP2 of mouse, rat and human origin by Western Blotting (starting dilution 1:200, dilution range 1:100-1:1000), immunoprecipitation [1-2 μ g per 100-500 μ g of total protein (1 ml of cell lysate)], immunofluorescence (starting dilution 1:50, dilution range 1:50-1:500) and solid phase ELISA (starting dilution 1:30, dilution range 1:30-1:3000); non cross-reactive with isoform LRRFIP2-3.

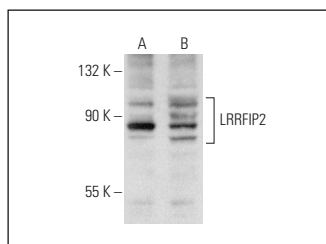
LRRFIP2 (D-17) is also recommended for detection of LRRFIP2 in additional species, including equine, canine, bovine, porcine and avian.

Suitable for use as control antibody for LRRFIP2 siRNA (h): sc-77893, LRRFIP2 siRNA (m): sc-149112, LRRFIP2 shRNA Plasmid (h): sc-77893-SH, LRRFIP2 shRNA Plasmid (m): sc-149112-SH, LRRFIP2 shRNA (h) Lentiviral Particles: sc-77893-V and LRRFIP2 shRNA (m) Lentiviral Particles: sc-149112-V.

Molecular Weight of LRRFIP2: 82 kDa.

Positive Controls: HeLa whole cell lysate: sc-2200, HeLa nuclear extract: sc-2120 or SK-MEL-28 cell lysate: sc-2236.

DATA



LRRFIP2 (D-17): sc-100025. Western blot analysis of LRRFIP2 expression in HeLa (A) and SK-MEL-28 (B) whole cell lysates.

STORAGE

Store at 4° C, **DO NOT FREEZE**. Stable for one year from the date of shipment. Non-hazardous. No MSDS required.

RESEARCH USE

For research use only, not for use in diagnostic procedures.

PROTOCOLS

See our web site at www.scbt.com or our catalog for detailed protocols and support products.