

METTL6 (G-12): sc-100036

BACKGROUND

METTL6 (methyltransferase-like protein 6) is a 255 amino acid enzyme that exists as 2 different isoforms. METTL6 belongs to the methyltransferase superfamily, which includes DNA methyltransferases (Dnmt), histone methyltransferases, catechol-O-methyl transferases, as well as many others. Members of this family have enzymatic activity that results in the transfer of a methyl group to and from DNA, RNA or amino acids. The gene encoding METTL6 maps to human chromosome 3, which is made up of about 214 million bases encoding over 1,100 genes, including a chemokine receptor (CKR) gene cluster and a variety of human cancer-related gene loci. Marfan Syndrome, porphyria, von Hippel-Lindau syndrome, osteogenesis imperfecta and Charcot-Marie-Tooth disease are a few of the numerous genetic diseases associated with chromosome 3.

CHROMOSOMAL LOCATION

Genetic locus: METTL6 (human) mapping to 3p25.1; Mettl6 (mouse) mapping to 14 B.

SOURCE

METTL6 (G-12) is an affinity purified goat polyclonal antibody raised against a peptide mapping within an internal region of METTL6 of human origin.

PRODUCT

Each vial contains 200 µg IgG in 1.0 ml of PBS with < 0.1% sodium azide and 0.1% gelatin.

Blocking peptide available for competition studies, sc-100036 P, (100 µg peptide in 0.5 ml PBS containing < 0.1% sodium azide and 0.2% BSA).

STORAGE

Store at 4° C, ****DO NOT FREEZE****. Stable for one year from the date of shipment. Non-hazardous. No MSDS required.

APPLICATIONS

METTL6 (G-12) is recommended for detection of METTL6 of mouse, rat and human origin by Western Blotting (starting dilution 1:200, dilution range 1:100-1:1000), immunoprecipitation [1-2 µg per 100-500 µg of total protein (1 ml of cell lysate)], immunofluorescence (starting dilution 1:50, dilution range 1:50-1:500) and solid phase ELISA (starting dilution 1:30, dilution range 1:30-1:3000); non cross-reactive with other METTL family members.

METTL6 (G-12) is also recommended for detection of METTL6 in additional species, including porcine.

Suitable for use as control antibody for METTL6 siRNA (h): sc-77947, METTL6 siRNA (m): sc-149390, METTL6 shRNA Plasmid (h): sc-77947-SH, METTL6 shRNA Plasmid (m): sc-149390-SH, METTL6 shRNA (h) Lentiviral Particles: sc-77947-V and METTL6 shRNA (m) Lentiviral Particles: sc-149390-V.

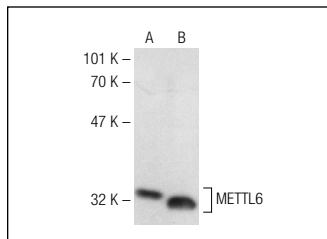
Molecular Weight of METTL6: 30 kDa.

Positive Controls: C3H/10T1/2 cell lysate: sc-3801 or 3611-RF whole cell lysate: sc-2215.

RECOMMENDED SECONDARY REAGENTS

To ensure optimal results, the following support (secondary) reagents are recommended: 1) Western Blotting: use donkey anti-goat IgG-HRP: sc-2020 (dilution range: 1:2000-1:100,000) or Cruz Marker™ compatible donkey anti-goat IgG-HRP: sc-2033 (dilution range: 1:2000-1:5000), Cruz Marker™ Molecular Weight Standards: sc-2035, TBS Blotto A Blocking Reagent: sc-2333 and Western Blotting Luminol Reagent: sc-2048. 2) Immunoprecipitation: use Protein A/G PLUS-Agarose: sc-2003 (0.5 ml agarose/2.0 ml). 3) Immunofluorescence: use donkey anti-goat IgG-FITC: sc-2024 (dilution range: 1:100-1:400) or donkey anti-goat IgG-TR: sc-2783 (dilution range: 1:100-1:400) with UltraCruz™ Mounting Medium: sc-24941.

DATA



METTL6 (G-12): sc-100036. Western blot analysis of METTL6 expression in C3H/10T1/2 (A) and 3611-RF (B) whole cell lysates.

RESEARCH USE

For research use only, not for use in diagnostic procedures.

PROTOCOLS

See our web site at www.scbt.com or our catalog for detailed protocols and support products.


 MONOS
Satisfaction
Guaranteed

Try **METTL6 (F-8): sc-515214**, our highly recommended monoclonal alternative to METTL6 (G-12).