

# TMEM40 (N-20): sc-100192

## BACKGROUND

Transmembrane protein 40 (TMEM40) is a 233 amino acid multi-pass membrane protein. Existing as two isoforms, TMEM40 is localized to chromosome 3p25.1 and is believed to play a role in collagen induced arthritis (CIA). Chromosome 3 is made up of about 214 million bases encoding over 1,100 genes. Notably, there is a chemokine receptor gene cluster and a variety of human cancer related loci on chromosome 3. Particular regions of the chromosome 3 short arm are deleted in many types of cancer cells, and key tumor suppressing genes on chromosome 3 encode apoptosis mediator RASSF1, cell migration regulator HYAL1, and angiogenesis suppressor SEMA3B. Marfan Syndrome, porphyria, von Hippel-Lindau syndrome, osteogenesis imperfecta and Charcot-Marie-Tooth Disease are a few of the numerous genetic diseases associated with chromosome 3.

## REFERENCES

- Müller, S., et al. 2000. Molecular cytogenetic dissection of human chromosomes 3 and 21 evolution. *Proc. Natl. Acad. Sci. USA* 97: 206-211.
- Braga, E.A., et al. 2003. New tumor suppressor genes in hot spots of human chromosome 3: new methods of identification. *Mol. Biol.* 37: 194-211.
- Yue, Y., et al. 2005. Genomic structure and paralogous regions of the inversion breakpoint occurring between human chromosome 3p12.3 and orangutan chromosome 2. *Cytogenet. Genome Res.* 108: 98-105.
- Yue, Y., et al. 2005. Comparative cytogenetics of human chromosome 3q21.3 reveals a hot spot for ectopic recombination in hominoid evolution. *Genomics* 85: 36-47.
- Darai, E., et al. 2005. Evolutionarily plastic regions at human 3p21.3 coincide with tumor breakpoints identified by the "elimination test". *Genomics* 86: 1-12.

## CHROMOSOMAL LOCATION

Genetic locus: TMEM40 (human) mapping to 3p25.2.

## SOURCE

TMEM40 (N-20) is an affinity purified rabbit polyclonal antibody raised against a peptide mapping near the N-terminus of TMEM40 of human origin.

## PRODUCT

Each vial contains 100 µg IgG in 1.0 ml of PBS with < 0.1% sodium azide and 0.1% gelatin.

Blocking peptide available for competition studies, sc-100192 P, (100 µg peptide in 0.5 ml PBS containing < 0.1% sodium azide and 0.2% BSA).

## STORAGE

Store at 4° C, **\*\*DO NOT FREEZE\*\***. Stable for one year from the date of shipment. Non-hazardous. No MSDS required.

## PROTOCOLS

See our web site at [www.scbt.com](http://www.scbt.com) or our catalog for detailed protocols and support products.

## APPLICATIONS

TMEM40 (N-20) is recommended for detection of TMEM40 of human origin by Western Blotting (starting dilution 1:200, dilution range 1:100-1:1000), immunoprecipitation [1-2 µg per 100-500 µg of total protein (1 ml of cell lysate)], immunofluorescence (starting dilution 1:50, dilution range 1:50-1:500) and solid phase ELISA (starting dilution 1:30, dilution range 1:30-1:3000); non cross-reactive with other TMEM family members.

Suitable for use as control antibody for TMEM40 siRNA (h): sc-77884, TMEM40 shRNA Plasmid (h): sc-77884-SH and TMEM40 shRNA (h) Lentiviral Particles: sc-77884-V.

Molecular Weight (predicted) of TMEM40: 25 kDa.

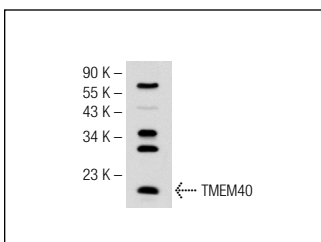
Molecular Weight (observed) of TMEM40: 19-37 kDa.

Positive Controls: NIH/3T3 whole cell lysate: sc-2210.

## RECOMMENDED SECONDARY REAGENTS

To ensure optimal results, the following support (secondary) reagents are recommended: 1) Western Blotting: use goat anti-rabbit IgG-HRP: sc-2004 (dilution range: 1:2000-1:100,000) or Cruz Marker™ compatible goat anti-rabbit IgG-HRP: sc-2030 (dilution range: 1:2000-1:5000), Cruz Marker™ Molecular Weight Standards: sc-2035, TBS Blotto A Blocking Reagent: sc-2333 and Western Blotting Luminol Reagent: sc-2048. 2) Immunoprecipitation: use Protein A/G PLUS-Agarose: sc-2003 (0.5 ml agarose/2.0 ml). 3) Immunofluorescence: use goat anti-rabbit IgG-FITC: sc-2012 (dilution range: 1:100-1:400) or goat anti-rabbit IgG-TR: sc-2780 (dilution range: 1:100-1:400) with UltraCruz™ Mounting Medium: sc-24941.

## DATA



TMEM40 (N-20): sc-100192. Western blot analysis of TMEM40 expression in NIH/3T3 whole cell lysate.

## RESEARCH USE

For research use only, not for use in diagnostic procedures.