

# WDR53 (S-15): sc-100251

## BACKGROUND

WD-repeats are motifs that are found in a variety of proteins and are characterized by a conserved core of 40-60 amino acids, which commonly form a tertiary propeller structure. While proteins that contain WD-repeats participate in a wide range of cellular functions, they are generally involved in regulatory mechanisms involving signal transduction, apoptosis, transcriptional regulation and cell cycle control. WD repeats serve as sites for protein-protein interaction and some seem to mediate the assembly of protein complexes. WDR53 (WD repeat-containing protein 53) is a 358 amino acid protein that contains 5 WD repeats. The gene encoding WDR53 maps to human chromosome 3, which is made up of about 214 million bases encoding over 1,100 genes, including a chemokine receptor (CKR) gene cluster and a variety of human cancer-related gene loci.

## REFERENCES

1. Neer, E.J., Schmidt, C.J., Nambudripad, R. and Smith, T.F. 1994. The ancient regulatory-protein family of WD-repeat proteins. *Nature* 371: 297-300.
2. Garcia-Higuera, I., Fenoglio, J., Li, Y., Lewis, C., Panchenko, M.P., Reiner, O., Smith, T.F. and Neer, E.J. 1996. Folding of proteins with WD-repeats: comparison of six members of the WD-repeat superfamily to the G protein  $\beta$  subunit. *Biochemistry* 35: 13985-13994.
3. Smith, T.F., Gaitatzes, C., Saxena, K. and Neer, E.J. 1999. The WD repeat: a common architecture for diverse functions. *Trends Biochem. Sci.* 24: 181-185.
4. Yu, L., Gaitatzes, C., Neer, E. and Smith, T.F. 2000. Thirty-plus functional families from a single motif. *Protein Sci.* 9: 2470-2476.
5. Li, D. and Roberts, R. 2001. WD-repeat proteins: structure characteristics, biological function, and their involvement in human diseases. *Cell. Mol. Life Sci.* 58: 2085-2097.
6. van Nocker, S. and Ludwig, P. 2003. The WD-repeat protein superfamily in *Arabidopsis*: conservation and divergence in structure and function. *BMC Genomics.* 4: 50.
7. Sjöblom, T., Jones, S., Wood, L.D., Parsons, D.W., Lin, J., Barber, T.D., Mandelker, D., Leary, R.J., Ptak, J., Silliman, N., Szabo, S., Buckhaults, P., Farrell, C., Meeh, P., Markowitz, S.D., Willis, J., Dawson, D., Willson, J.K., Gazdar, A.F., Hartigan, J., Wu, L., Liu, C., Parmigiani, G., Park, B.H., Bachman, K.E., Papadopoulos, N., Vogelstein, B., Kinzler, K.W. and Velculescu, V.E. 2006. The consensus coding sequences of human breast and colorectal cancers. *Science* 314: 268-274.
8. Dephoure, N., Zhou, C., Villen, J., Beausoleil, S.A., Bakalarski, C.E., Elledge, S.J. and Gygi, S.P. 2008. A quantitative atlas of mitotic phosphorylation. *Proc. Natl. Acad. Sci. USA* 105: 10762-10767.
9. Hudson, A.M. and Cooley, L. 2008. Phylogenetic, structural and functional relationships between WD- and Kelch-repeat proteins. *Subcell. Biochem.* 48: 6-19.

## CHROMOSOMAL LOCATION

Genetic locus: WDR53 (human) mapping to 3q29; Wdr53 (mouse) mapping to 16 B2.

## SOURCE

WDR53 (S-15) is an affinity purified goat polyclonal antibody raised against a peptide mapping within an internal region of WDR53 of human origin.

## PRODUCT

Each vial contains 200  $\mu$ g IgG in 1.0 ml of PBS with < 0.1% sodium azide and 0.1% gelatin.

Blocking peptide available for competition studies, sc-100251 P, (100  $\mu$ g peptide in 0.5 ml PBS containing < 0.1% sodium azide and 0.2% BSA).

## APPLICATIONS

WDR53 (S-15) is recommended for detection of WDR53 of mouse, rat and human origin by Western Blotting (starting dilution 1:200, dilution range 1:100-1:1000), immunoprecipitation [1-2  $\mu$ g per 100-500  $\mu$ g of total protein (1 ml of cell lysate)], immunofluorescence (starting dilution 1:50, dilution range 1:50-1:500) and solid phase ELISA (starting dilution 1:30, dilution range 1:30-1:3000); non cross-reactive with other WDR family members.

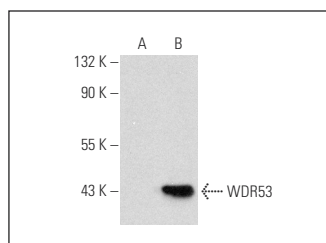
WDR53 (S-15) is also recommended for detection of WDR53 in additional species, including equine.

Suitable for use as control antibody for WDR53 siRNA (h): sc-78044, WDR53 siRNA (m): sc-155295, WDR53 shRNA Plasmid (h): sc-78044-SH, WDR53 shRNA Plasmid (m): sc-155295-SH, WDR53 shRNA (h) Lentiviral Particles: sc-78044-V and WDR53 shRNA (m) Lentiviral Particles: sc-155295-V.

Molecular Weight of WDR53: 39 kDa.

Positive Controls: WDR53 (m): 293T Lysate: sc-124629 or SK-N-MC cell lysate: sc-2237.

## DATA



WDR53 (S-15): sc-100251. Western blot analysis of WDR53 expression in non-transfected: sc-117752 (A) and mouse WDR53 transfected: sc-124629 (B) 293T whole cell lysates.

## STORAGE

Store at 4° C, **\*\*DO NOT FREEZE\*\***. Stable for one year from the date of shipment. Non-hazardous. No MSDS required.

## RESEARCH USE

For research use only, not for use in diagnostic procedures.