

CaMKI (147): sc-100363

BACKGROUND

The Ca²⁺/calmodulin-dependent protein kinases (CaM kinases) comprise a structurally related subfamily of serine/threonine kinases which include CaMKI, CaMKII and CaMKIV. CaMKII is a ubiquitously expressed serine/threonine protein kinase that is activated by Ca²⁺ and calmodulin (CaM) and has been implicated in regulation of the cell cycle and transcription. There are four CaMKII isozymes, designated α , β , γ and δ , which may or may not be coexpressed in the same tissue type. CaMKIV is stimulated by Ca²⁺ and CaM but also requires phosphorylation by a CaMK for full activation. Stimulation of the T cell receptor CD3 signaling complex with an anti-CD3 monoclonal antibody leads to a 10-40 fold increase in CaMKIV activity. An additional kinase, CaMKK, functions to activate CaMKI through the specific phosphorylation of the regulatory threonine residue at position 177.

REFERENCES

1. Tombes, R.M., et al. 1995. G₁ cell cycle arrest apoptosis are induced in NIH/3T3 cells by KN-93, an inhibitor of CaMK-II (the multifunctional Ca²⁺/CaM kinase). *Cell Growth Differ.* 6: 1063-1070.
2. Hama, N., et al. 1995. Calcium/calmodulin-dependent protein kinase II downregulates both calcineurin and protein kinase c-mediated pathways for cytokine gene transcription in human T cells. *J. Exp. Med.* 181: 1217-1222.
3. Baltas, L.G., et al. 1995. The cardiac sarcoplasmic reticulum phospholamban kinase is a distinct δ -CaM kinase isozyme. *FEBS Lett.* 373: 71-75.
4. Tokumitsu, H., et al. 1995. Characterization of a CaM-kinase cascade: molecular cloning and expression of calcium/calmodulin-dependent protein kinase kinase. *J. Biol. Chem.* 270: 19320-19324.
5. Park, I.K., et al. 1995. Activation of Ca²⁺/calmodulin-dependent protein kinase (CaM-kinase) IV by CaM-kinase kinase in Jurkat T lymphocytes. *J. Biol. Chem.* 270: 30464-30469.
6. Tashima, K., et al. 1996. Overexpression of Ca²⁺/calmodulin-dependent protein kinase II inhibits neurite outgrowth of PC12 cells. *J. Neurochem.* 66: 57-64.

CHROMOSOMAL LOCATION

Genetic locus: CAMK1 (human) mapping to 3p25.3; Camk1 (mouse) mapping to 6 E3.

SOURCE

CaMKI (147) is a mouse monoclonal antibody raised against recombinant CaMKI of human origin.

PRODUCT

Each vial contains 100 μ g IgG₁ in 1.0 ml PBS with < 0.1% sodium azide and 0.1% gelatin.

STORAGE

Store at 4° C, ****DO NOT FREEZE****. Stable for one year from the date of shipment. Non-hazardous. No MSDS required.

APPLICATIONS

CaMKI (147) is recommended for detection of CaMKI of mouse and human origin by Western Blotting (starting dilution 1:200, dilution range 1:100-1:1000), immunoprecipitation [1-2 μ g per 100-500 μ g of total protein (1 ml of cell lysate)] and solid phase ELISA (starting dilution 1:30, dilution range 1:30-1:3000).

Suitable for use as control antibody for CaMKI siRNA (h): sc-38947, CaMKI siRNA (m): sc-38948, CaMKI shRNA Plasmid (h): sc-38947-SH, CaMKI shRNA Plasmid (m): sc-38948-SH, CaMKI shRNA (h) Lentiviral Particles: sc-38947-V and CaMKI shRNA (m) Lentiviral Particles: sc-38948-V.

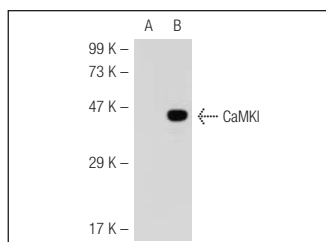
Molecular Weight of CaMKI: 41 kDa.

Positive Controls: CaMKI (m): 293T Lysate: sc-118979, CaMKI (h): 293T Lysate: sc-177014 or HL-60 whole cell lysate: sc-2209.

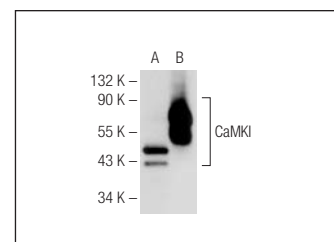
RECOMMENDED SECONDARY REAGENTS

To ensure optimal results, the following support (secondary) reagents are recommended: 1) Western Blotting: use goat anti-mouse IgG-HRP: sc-2005 (dilution range: 1:2000-1:32,000) or Cruz Marker™ compatible goat anti-mouse IgG-HRP: sc-2031 (dilution range: 1:2000-1:5000), Cruz Marker™ Molecular Weight Standards: sc-2035, TBS Blotting A Blocking Reagent: sc-2333 and Western Blotting Luminol Reagent: sc-2048. 2) Immunoprecipitation: use Protein A/G PLUS-Agarose: sc-2003 (0.5 ml agarose/2.0 ml).

DATA



CaMKI (147): sc-100363. Western blot analysis of CaMKI expression in non-transfected: sc-117752 (A) and mouse CaMKI transfected: sc-118979 (B) 293T whole cell lysates.



CaMKI (147): sc-100363. Western blot analysis of CaMKI expression in non-transfected: sc-117752 (A) and human CaMKI transfected: sc-177014 (B) 293T whole cell lysates.

RESEARCH USE

For research use only, not for use in diagnostic procedures.

PROTOCOLS

See our web site at www.scbt.com or our catalog for detailed protocols and support products.