



SLC35A3 (YB-13): sc-101313

BACKGROUND

SLC35A3 (solute carrier family 35 (UDP-N-acetylglucosamine (UDP-GlcNAc) transporter), member A3) is a 325 amino acid multi-pass membrane protein that belongs to the SLC35A subfamily of the nucleotide-sugar transporter (NST) family. Members of the NST family are transmembrane proteins that mediate the translocation of nucleotide-sugars from the cytosol to the inter- or lumen of the endoplasmic reticulum (ER) and the Golgi apparatus via an antiport mechanism, exchanging nucleoside monophosphates for nucleotide-sugars. This activity of NSTs is important for providing an available source of nucleotide-sugars for glycoconjugate synthesis. Localizing to the Golgi apparatus membrane, SLC35A3 functions as a monospecific UDP-GlcNAc transporter. In cattle, mutations in the gene encoding SLC35A3 can result in complex vertebral malformation (CMV), a lethal disorder that is defined by fused and misshapen vertebrae near the cervico-thoracic junction.

REFERENCES

1. Ishida, N., Yoshioka, S., Chiba, Y., Takeuchi, M. and Kawakita, M. 1999. Molecular cloning and functional expression of the human Golgi UDP-N-acetylglucosamine transporter. *J. Biochem.* 126: 68-77.
2. Online Mendelian Inheritance in Man, OMIM™. 2002. Johns Hopkins University, Baltimore, MD. MIM Number: 605632. World Wide Web URL: <http://www.ncbi.nlm.nih.gov/omim/>
3. Ghebranious, N., Burmester, J.K., Glurich, I., McPherson, E., Ivacic, L., Kislow, J., Rasmussen, K., Kumar, V., Raggio, C.L., Blank, R.D., Jacobsen, F.S., Faciszewski, T., Womack, J. and Giampietro, P.F. 2006. Evaluation of SLC35A3 as a candidate gene for human vertebral malformations. *Am. J. Med. Genet. A.* 140: 1346-1348.
4. Thomsen, B., Horn, P., Panitz, F., Bendixen, E., Petersen, A.H., Holm, L.E., Nielsen, V.H., Agerholm, J.S., Ambjerg, J. and Bendixen, C. 2006. A missense mutation in the bovine SLC35A3 gene, encoding a UDP-N-acetylglucosamine transporter, causes complex vertebral malformation. *Genome Res.* 16: 97-9105.
5. Andersen, P.K., Veng, L., Juul-Madsen, H.R., Vingborg, R.K., Bendixen, C. and Thomsen, B. 2007. Gene expression profiling, chromosome assignment and mutational analysis of the porcine Golgi-resident UDP-N-acetylglucosamine transporter SLC35A3. *Mol. Membr. Biol.* 24: 519-530.
6. Guillaume, F., Gautier, M., Ben Jemaa, S., Fritz, S., Eggen, A., Boichard, D. and Druet, T. 2007. Refinement of two female fertility QTL using alternative phenotypes in French Holstein dairy cattle. *Anim. Genet.* 38: 72-74.

CHROMOSOMAL LOCATION

Genetic locus: SLC35A3 (human) mapping to 1p21.2.

STORAGE

Store at 4° C, **DO NOT FREEZE**. Stable for one year from the date of shipment. Non-hazardous. No MSDS required.

PROTOCOLS

See our web site at www.scbt.com or our catalog for detailed protocols and support products.

SOURCE

SLC35A3 (YB-13) is a mouse monoclonal antibody raised against recombinant SLC35A3 of human origin.

PRODUCT

Each vial contains 50 µg IgG_{2a} in 500 µl PBS with < 0.1% sodium azide and 0.1% gelatin.

APPLICATIONS

SLC35A3 (YB-13) is recommended for detection of SLC35A3 of human origin by Western Blotting (starting dilution 1:200, dilution range 1:100-1:1000), immunoprecipitation [1-2 µg per 100-500 µg of total protein (1 ml of cell lysate)] and solid phase ELISA (starting dilution 1:30, dilution range 1:30-1:3000).

Suitable for use as control antibody for SLC35A3 siRNA (h): sc-88392, SLC35A3 shRNA Plasmid (h): sc-88392-SH and SLC35A3 shRNA (h) Lentiviral Particles: sc-88392-V.

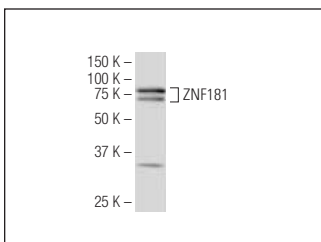
Molecular Weight of SLC35A3: 36 kDa.

Positive Controls: MCF7 whole cell lysate: sc-2206.

RECOMMENDED SECONDARY REAGENTS

To ensure optimal results, the following support (secondary) reagents are recommended: 1) Western Blotting: use goat anti-mouse IgG-HRP: sc-2005 (dilution range: 1:2000-1:32,000) or Cruz Marker™ compatible goat anti-mouse IgG-HRP: sc-2031 (dilution range: 1:2000-1:5000), Cruz Marker™ Molecular Weight Standards: sc-2035, TBS Blotto A Blocking Reagent: sc-2333 and Western Blotting Luminol Reagent: sc-2048. 2) Immunoprecipitation: use Protein A/G PLUS-Agarose: sc-2003 (0.5 ml agarose/2.0 ml).

DATA



SLC35A3 (YB-13): sc-101313. Western blot analysis of SLC35A3 expression in MCF7 whole cell lysate.

RESEARCH USE

For research use only, not for use in diagnostic procedures.