

Arp3 (C-16): sc-10132

BACKGROUND BACKGROUND

Actin polymerization is required for a variety of cell functions, including chemotaxis, cell migration, cell adhesion, and platelet activation. Cells trigger actin polymerization through either the *de novo* nucleation of filaments from monomeric actin, the severing of existing filaments to create uncapped barbed ends, or the uncapping existing barbed ends. The nucleation of actin is a rate-limiting and unfavorable reaction in actin polymerization and therefore requires the involvement of the Arp2/3 complex, which helps create new filaments and promotes the end-to-side cross-linking of actin filaments into the branching meshwork. The Arp2/3 complex consists of the actin-related proteins Arp2 and Arp3, and various other accessory proteins. The Arp2/3 complex promotes actin nucleation by binding the pointed end of actin filaments, or by associating with the side of an existing filament, and nucleates growth in the barbed direction. In addition, the Arp2/3 complex also mediates actin cytoskeletal outgrowths that are regulated by the Rho family of small GTPases. In response to GTP-binding Cdc42, the Arp2/3 complex binds the Cdc42 substrates, namely the WASP proteins, and initiates the formation of lamellipodia and filopodia.

CHROMOSOMAL LOCATION

Genetic locus: ACTR3 (human) mapping to 2q14.1; Actr3 (mouse) mapping to 1 E3.

SOURCE

Arp3 (C-16) is an affinity purified goat polyclonal antibody raised against a peptide mapping at the C-terminus of Arp3 of human origin.

PRODUCT

Each vial contains 200 µg IgG in 1.0 ml of PBS with < 0.1% sodium azide and 0.1% gelatin.

Blocking peptide available for competition studies, sc-10132 P, (100 µg peptide in 0.5 ml PBS containing < 0.1% sodium azide and 0.2% BSA).

APPLICATIONS

Arp3 (C-16) is recommended for detection of Arp3 of mouse, rat and human origin by Western Blotting (starting dilution 1:200, dilution range 1:100-1:1000), immunoprecipitation [1-2 µg per 100-500 µg of total protein (1 ml of cell lysate)], immunofluorescence (starting dilution 1:50, dilution range 1:50-1:500) and immunohistochemistry (including paraffin-embedded sections) (starting dilution 1:50, dilution range 1:50-1:500).

Arp3 (C-16) is also recommended for detection of Arp3 in additional species, including equine, canine, bovine, porcine and avian.

Suitable for use as control antibody for Arp3 siRNA (h): sc-29739, Arp3 siRNA (m): sc-29740, Arp3 shRNA Plasmid (h): sc-29739-SH, Arp3 shRNA Plasmid (m): sc-29740-SH, Arp3 shRNA (h) Lentiviral Particles: sc-29739-V and Arp3 shRNA (m) Lentiviral Particles: sc-29740-V.

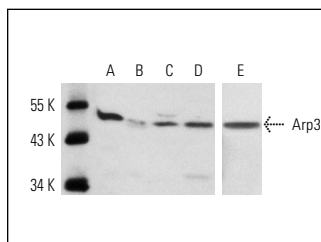
Molecular Weight of Arp3: 53 kDa.

Positive Controls: HeLa whole cell lysate: sc-2200, KNRK whole cell lysate: sc-2214 or NIH/3T3 whole cell lysate: sc-2210.

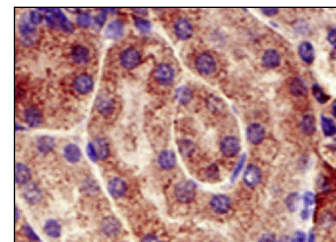
RECOMMENDED SECONDARY REAGENTS

To ensure optimal results, the following support (secondary) reagents are recommended: 1) Western Blotting: use donkey anti-goat IgG-HRP: sc-2020 (dilution range: 1:2000-1:100,000) or Cruz Marker™ compatible donkey anti-goat IgG-HRP: sc-2033 (dilution range: 1:2000-1:5000), Cruz Marker™ Molecular Weight Standards: sc-2035, TBS Blotto A Blocking Reagent: sc-2333 and Western Blotting Luminol Reagent: sc-2048. 2) Immunoprecipitation: use Protein A/G PLUS-Agarose: sc-2003 (0.5 ml agarose/2.0 ml). 3) Immunofluorescence: use donkey anti-goat IgG-FITC: sc-2024 (dilution range: 1:100-1:400) or donkey anti-goat IgG-TR: sc-2783 (dilution range: 1:100-1:400) with UltraCruz™ Mounting Medium: sc-24941. 4) Immunohistochemistry: use ImmunoCruz™: sc-2053 or ABC: sc-2023 goat IgG Staining Systems.

DATA



Western blot analysis of Arp3 expression in KNRK (A-E), HeLa (B), NIH/3T3 (C) and C32 (D) whole cell lysates. Antibodies tested include Arp3 (C-16): sc-10132 (A-D) and Arp3 (G-15): sc-10130 (E).



Arp3 (C-16): sc-10132. Immunoperoxidase staining of formalin fixed, paraffin-embedded mouse kidney tissue showing cytoplasmic localization.

STORAGE

Store at 4° C, **DO NOT FREEZE**. Stable for one year from the date of shipment. Non-hazardous. No MSDS required.

RESEARCH USE

For research use only, not for use in diagnostic procedures.

PROTOCOLS

See our web site at www.scbt.com or our catalog for detailed protocols and support products.

MONOS
Satisfaction
Guaranteed

Try **Arp3 (A-1): sc-48344** or **Arp3 (B-1): sc-374200**, our highly recommended monoclonal alternatives to Arp3 (C-16).