

p-Elk-1 (Ser 389): sc-101671

BACKGROUND

Ets-1 is the prototype member of a family of genes identified on the basis of homology to the v-Ets oncogene isolated from the E26 erythroblastosis virus. This family of genes currently includes Ets-1, Ets-2, Erg-1-3, Elk-1, Elf-1, Elf-5, NERF, PU.1, PEA3, ERM, FEV, ER81, Fli-1, TEL, Spi-B, ESE-1, ESE-3A, Net, ABT1 and ERF. Members of the Ets gene family exhibit varied patterns of tissue expression, and share a highly conserved carboxy-terminal domain containing a sequence related to the SV40 large T antigen nuclear localization signal sequence. This conserved domain is essential for Ets-1 binding to DNA and is likely to be responsible for the DNA binding activity of all members of the Ets gene family. Several of these proteins have been shown to recognize similar motifs in DNA that share a centrally located 5'-GGAA-3' element.

REFERENCES

1. Ghysdael, J., Gegonne, A., Pognonec, P., Dernis, D., Leprince, D. and Stehelin, D. 1986. Identification and preferential expression in thymic and bursal lymphocytes of a c-Ets oncogene-encoded M_r 54,000 cytoplasmic protein. *Proc. Natl. Acad. Sci. USA* 83: 1714-1718.
2. Rao, V.N., Heubner, K., Isobe, M., Ar-Rushdi, A., Croce, C.M. and Reddy, E.S. 1989. Elk, tissue-specific Ets-related genes on chromosomes X and 14 near translocation breakpoints. *Science* 244: 66-70.
3. Burtis, K.C., Thummel, C.S., Jones, C.W., Karin, F.D. and Hogness, D.S. 1990. The *Drosophila* 74EF early puff contains E74, a complex ecdysone-inducible gene that encodes two Ets-related proteins. *Cell* 61: 85-99.
4. Xin, J.H., Cowie, A., Lachance, P. and Hassell, J.A. 1992. Molecular cloning and characterization of PEA3, a new member of the Ets oncogene family that is differentially expressed in mouse embryonic cells. *Genes Dev.* 6: 481-496.
5. Pongubala, J.M., Van Beveren, C., Nagulapalli, S., Klemsz, M.J., McKercher, S.R., Maki, R.A. and Atchison, M.L. 1993. Effect of PU.1 phosphorylation on interaction with NF-EM5 and transcriptional activation. *Science* 259: 1622-1625.
6. Kola, I., Brookes, S., Green, A.R., Garber, R., Tymms, M., Papas, T.S. and Seth, A. 1993. The Ets1 transcription factor is widely expressed during murine embryo development and is associated with mesodermal cells involved in morphogenetic processes such as organ formation. *Proc. Natl. Acad. Sci. USA* 90: 7588-7592.

CHROMOSOMAL LOCATION

Genetic locus: ELK1 (human) mapping to Xp11.2; Elk1 (mouse) mapping to XA1-A3.

SOURCE

p-Elk-1 (Ser 389) is a rabbit polyclonal antibody raised against a short amino acid sequence containing phosphorylated Ser 389 of Elk-1 of human origin.

PRODUCT

Each vial contains 100 µg IgG in 1.0 ml of PBS with < 0.1% sodium azide and 0.1% gelatin.

APPLICATIONS

p-Elk-1 (Ser 389) is recommended for detection of Ser 389 phosphorylated Elk-1 of human origin, correspondingly phosphorylated Ser 390 of mouse origin and correspondingly phosphorylated Ser 388 of rat origin by immunofluorescence and immunohistochemistry (including paraffin-embedded sections) (starting dilution 1:50, dilution range 1:50-1:500).

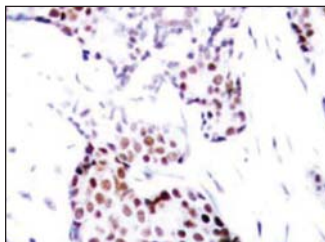
Suitable for use as control antibody for Elk-1 siRNA (h): sc-35290 and Elk-1 siRNA (m): sc-35291.

Molecular Weight of p-Elk-1: 62 kDa.

RECOMMENDED SECONDARY REAGENTS

To ensure optimal results, the following support (secondary) reagents are recommended: 1) Immunofluorescence: use goat anti-rabbit IgG-FITC: sc-2012 (dilution range: 1:100-1:400) or goat anti-rabbit IgG-TR: sc-2780 (dilution range: 1:100-1:400) with UltraCruz™ Mounting Medium: sc-24941. 2) Immunohistochemistry: use ImmunoCruz™: sc-2051 or ABC: sc-2018 rabbit IgG Staining Systems.

DATA



p-Elk-1 (Ser 389): sc-101671. Immunoperoxidase staining of formalin-fixed, paraffin-embedded human breast carcinoma tissue showing nuclear localization.

STORAGE

Store at 4° C, ****DO NOT FREEZE****. Stable for one year from the date of shipment. Non-hazardous. No MSDS required.

RESEARCH USE

For research use only, not for use in diagnostic procedures.

PROTOCOLS

See our web site at www.scbt.com or our catalog for detailed protocols and support products.