

p-c-Jun (Ser 243): sc-101719

BACKGROUND

Genes belonging to the Jun and Fos oncogene families encode nuclear proteins that are found to be associated with a number of transcriptional complexes. The c-Jun protein is a major component of the transcription factor AP-1, originally shown to mediate phorbol ester tumor promoter (TPA)-induced expression of responsive genes through the TPA-response element (TRE). The Jun proteins form homo- and heterodimers which bind the TRE, while Fos proteins are active only as heterodimers with any of the Jun proteins. Fos/Jun heterodimers have a much higher affinity for the TRE than Jun homodimers. Ha-Ras augments c-Jun activity and stimulates phosphorylation of its activation domain. An inhibitor of Fos/Jun function, termed IP-1, associates with Fos and Jun and is inactivated upon phosphorylation induced by the cAMP-dependent protein kinase A (PKA).

REFERENCES

1. Sambucetti, L.C., et al. 1986. The Fos protein complex is associated with DNA in isolated nuclei and binds to DNA cellulose. *Science* 234: 1417-1419.
2. Bohmann, D., et al. 1987. Human proto-oncogene c-Jun encodes a DNA binding protein with structural and functional properties of transcription factor AP-1. *Science* 238: 1386-1392.
3. Distel, R.J., et al. 1987. Nucleoprotein complexes that regulate gene expression in adipocyte differentiation: direct participation of c-Fos. *Cell* 49: 835-844.
4. Renz, M., et al. 1987. Chromatin association and DNA-binding properties of the c-Fos proto-oncogene product. *Nucleic Acids Res.* 15: 277-292.
5. Franza, B.R., et al. 1988. The Fos complex and Fos related antigens recognize sequence elements that contain AP-1 binding sites. *Science* 239: 1150-1153.

CHROMOSOMAL LOCATION

Genetic locus: JUN (human) mapping to 1p32.1; Jun (mouse) mapping to 4 C5.

SOURCE

p-c-Jun (Ser 243) is a rabbit polyclonal antibody raised against a short amino acid sequence containing phosphorylated Ser 243 of c-Jun of human origin.

PRODUCT

Each vial contains 100 µg IgG in 1.0 ml of PBS with < 0.1% sodium azide and 0.1% gelatin.

STORAGE

Store at 4° C, ****DO NOT FREEZE****. Stable for one year from the date of shipment. Non-hazardous. No MSDS required.

PROTOCOLS

See our web site at www.scbt.com or our catalog for detailed protocols and support products.

APPLICATIONS

p-c-Jun (Ser 243) is recommended for detection of Ser 243 phosphorylated c-Jun of human origin and correspondingly phosphorylated Ser 246 of mouse and rat origin by Western Blotting (starting dilution 1:200, dilution range 1:100-1:1000), immunoprecipitation [1–2 µg per 100–500 µg of total protein (1 ml of cell lysate)], immunofluorescence and immunohistochemistry (including paraffin-embedded sections) (starting dilution 1:50, dilution range 1:50-1:500).

Suitable for use as control antibody for c-Jun siRNA (h): sc-29223, c-Jun siRNA (m): sc-29224, c-Jun shRNA Plasmid (h): sc-29223-SH, c-Jun shRNA Plasmid (m): sc-29224-SH, c-Jun shRNA (h) Lentiviral Particles: sc-29223-V and c-Jun shRNA (m) Lentiviral Particles: sc-29224-V.

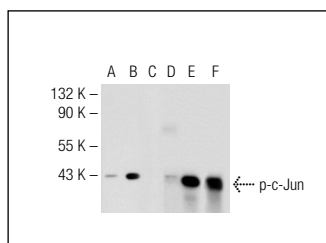
Molecular Weight of p-c-Jun: 39 kDa.

Positive Controls: c-Jun (m): 293T Lysate: sc-125069, NIH/3T3 + anisomycin cell lysate: sc-2247 or HeLa + UV irradiated cell lysate: sc-2221.

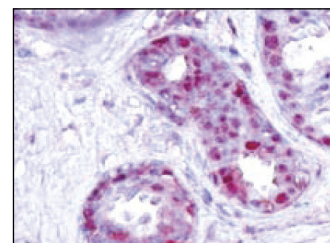
RECOMMENDED SECONDARY REAGENTS

To ensure optimal results, the following support (secondary) reagents are recommended: 1) Western Blotting: use goat anti-rabbit IgG-HRP: sc-2004 (dilution range: 1:2000-1:100,000) or Cruz Marker™ compatible goat anti-rabbit IgG-HRP: sc-2030 (dilution range: 1:2000-1:5000), Cruz Marker™ Molecular Weight Standards: sc-2035, TBS Blotto B Blocking Reagent: sc-2335 (use 50 mM NaF, sc-24988, as diluent), Western Blotting Luminol Reagent: sc-2048 and Lambda Phosphatase: sc-200312A. 2) Immunoprecipitation: use Protein A/G PLUS-Agarose: sc-2003 (0.5 ml agarose/2.0 ml). 3) Immunofluorescence: use goat anti-rabbit IgG-FITC: sc-2012 (dilution range: 1:100-1:400) or goat anti-rabbit IgG-TR: sc-2780 (dilution range: 1:100-1:400) with UltraCruz™ Mounting Medium: sc-24941. 4) Immunohistochemistry: use ImmunoCruz™: sc-2051 or ABC: sc-2018 rabbit IgG Staining Systems.

DATA



Western blot analysis of c-Jun phosphorylation in non-transfected: sc-117752 (A, D), untreated mouse c-Jun transfected: sc-125069 (B, E) and lambda protein phosphatase (sc-200312A) treated mouse c-Jun transfected: sc-125069 (C, F) 293T whole cell lysates. Antibodies tested include p-c-Jun (Ser 243): sc-101719 (A, B, C) and c-Jun (N): sc-45 (D, E, F).



p-c-Jun (Ser 243): sc-101719. Immunoperoxidase staining of formalin-fixed, paraffin-embedded human breast carcinoma tissue showing nuclear localization.

RESEARCH USE

For research use only, not for use in diagnostic procedures.