

PSGL-1 (V-15): sc-10174

BACKGROUND

PSGL-1 (P-Selectin glycoprotein ligand, also designated CD162) exists as a disulfide-linked homodimer consisting of two 120 kDa subunits. PSGL-1 is a type 1 membrane protein that localizes on the tips of microvilli of leukocytes. Its extracellular domain is rich in serines, threonines and prolines, and includes a series of 15 and 16 decameric repeats in HL-60 and U-937 cells and human leukocytes, respectively. Although PSGL-1 appears to be the sole receptor for P-Selectin on human hematopoietic cells, it also interacts with E-Selectin through a unique binding site. In order to bind PSGL-1 to either E-Selectin or P-Selectin, PSGL-1 must be sialylated and fucosylated. PSGL-1 is a mucin-like molecule, much like leukosialin (CD43), CD164 and CD34. These proteins belong to an emerging family of cell adhesion receptors called sialomucins, which transduce negative signals in hematopoietic cells.

REFERENCES

- Moore, K., Stults, N., Diaz, S., Smith, D., Cummings, R., Varki, A. and McEver, R. 1992. Identification of a specific glycoprotein ligand for P-Selectin (CD62) on myeloid cells. *J. Biol. Chem.* 118: 445-456.
- Sako, D., Chang, X., Barone, K., Vachino, G., White, H., Shaw, G., Veldman, G., Bean, K., Ahern, T. and Furie, B. 1993. Expression cloning of a functional glycoprotein ligand for P-Selectin. *Cell* 75: 1179-1186.
- Veldman, G., Bean, K., Cumming, D., Eddy, R. and Sait, S. 1995. Genomic organization and chromosomal localization of the gene encoding human P-Selectin glycoprotein ligand. *J. Biol. Chem.* 7: 16470-16475.
- Patel, K., Moore, K., Nollert, M. and McEver, R. 1995. Neutrophils use both shared and distinct mechanisms to adhere to selectins under static and flow conditions. *J. Clin. Invest.* 96: 1887-1896.
- Li, F., Erickson, H.P., James, J.A., Moore, K.L., Cummings, R.D. and McEver, R.P. 1996. Visualization of P-Selectin glycoprotein ligand-1 as a highly extended molecule and mapping of protein epitopes for monoclonal antibodies. *J. Biol. Chem.* 271: 6342-6348.
- Levesque, J.P., Zannettino, A.C., Pudney, M., Niuitta, S., Haylock, D.N., Snapp, K.R., Kansas, G.S., Berndt, M.C. and Simmons, P.J. 1999. PSGL-1-mediated adhesion of human hematopoietic progenitors to P-Selectin results in suppression of hematopoiesis. *Immunity* 11: 369-378.

CHROMOSOMAL LOCATION

Genetic locus: Selpl (mouse) mapping to 5 F.

SOURCE

PSGL-1 (V-15) is an affinity purified goat polyclonal antibody raised against a epitope mapping within an internal region of PSGL-1 of mouse origin.

PRODUCT

Each vial contains 200 µg IgG in 1.0 ml of PBS with < 0.1% sodium azide and 0.1% gelatin.

Blocking peptide available for competition studies, sc-10174 P, (100 µg peptide in 0.5 ml PBS containing < 0.1% sodium azide and 0.2% BSA).

APPLICATIONS

PSGL-1 (V-15) is recommended for detection of PSGL-1 of mouse and rat origin by Western Blotting (starting dilution 1:200, dilution range 1:100-1:1000), immunoprecipitation [1-2 µg per 100-500 µg of total protein (1 ml of cell lysate)], immunofluorescence (starting dilution 1:50, dilution range 1:50-1:500) and solid phase ELISA (starting dilution 1:30, dilution range 1:30-1:3000).

Suitable for use as control antibody for PSGL-1 siRNA (m): sc-42833, PSGL-1 shRNA Plasmid (m): sc-42833-SH and PSGL-1 shRNA (m) Lentiviral Particles: sc-42833-V

Molecular Weight of PSGL-1 monomer: 120 kDa.

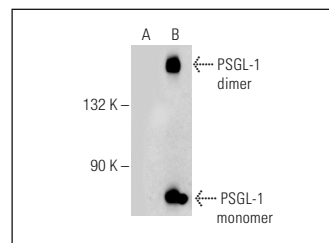
Molecular Weight of PSGL-1 homodimer: 240 kDa.

Positive Controls: PSGL-1 (m): 293T Lysate: sc-122816 or rat PBL whole cell lysate.

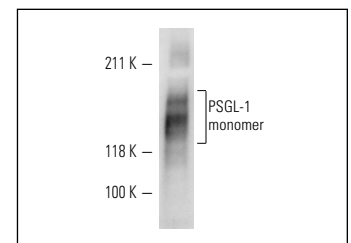
RECOMMENDED SECONDARY REAGENTS

To ensure optimal results, the following support (secondary) reagents are recommended: 1) Western Blotting: use donkey anti-goat IgG-HRP: sc-2020 (dilution range: 1:2000-1:100,000) or Cruz Marker™ compatible donkey anti-goat IgG-HRP: sc-2033 (dilution range: 1:2000-1:5000), Cruz Marker™ Molecular Weight Standards: sc-2035, TBS Blotto A Blocking Reagent: sc-2333 and Western Blotting Luminol Reagent: sc-2048. 2) Immunoprecipitation: use Protein A/G PLUS-Agarose: sc-2003 (0.5 ml agarose/2.0 ml). 3) Immunofluorescence: use donkey anti-goat IgG-FITC: sc-2024 (dilution range: 1:100-1:400) or donkey anti-goat IgG-TR: sc-2783 (dilution range: 1:100-1:400) with UltraCruz™ Mounting Medium: sc-24941.

DATA



PSGL-1 (V-15): sc-10174. Western blot analysis of PSGL-1 expression in non-transfected: sc-117752 (A) and mouse PSGL-1 transfected: sc-122816 (B) 293T whole cell lysates.



PSGL-1 (V-15): sc-10174. Western blot analysis of PSGL-1 expression in rat PBL whole cell lysate.

STORAGE

Store at 4° C, **DO NOT FREEZE**. Stable for one year from the date of shipment. Non-hazardous. No MSDS required.

RESEARCH USE

For research use only, not for use in diagnostic procedures.