

# p-Dok-2 (Tyr 299): sc-101765

## BACKGROUND

Dok-1 associates with the Ras GTPase activating protein (Ras GAP) upon tyrosine phosphorylation. Evidence suggests that p62 Dok-1 is a substrate of the constitutive tyrosine kinase activity of p210 Bcr-Abl, a fusion protein caused by the t(9;22) translocation and associated with chronic myelogenous leukemia. Dok-1, as well as the tyrosine kinase substrates IRS-1 and Cas, is a member of a class of "docking" proteins which contain multiple tyrosine residues and putative SH2 binding sites. Dok-1 is suspected to be the substrate phosphorylated in response to stimulation by a number of growth factors, including PDGF, VEGF, Insulin and IGF. Dok-2 (also designated p56 Dok) has also been identified as a potential mediator of the effects of p210 Bcr-Abl.

## REFERENCES

1. Wisniewski, D., Strife, A., Wojciechowicz, D., Lambek, C. and Clarkson, B. 1994. A 62-kilodalton tyrosine phosphoprotein constitutively present in primary chronic phase chronic myelogenous leukemia enriched lineage negative blast populations. *Leukemia* 8: 688-693.
2. Myers, M.G., Sun, X.J. and White, M.F. 1994. The IRS-1 signaling system. *Trends Biochem. Sci.* 19: 289-293.
3. Mayer, B.J., Hirai, H. and Sakai, R. 1995. Evidence that SH2 domains promote processive phosphorylation by protein-tyrosine kinases. *Curr. Biol.* 5: 296-305.
4. Guo, D., Jia, Q., Song, H.Y., Warren, R.S. and Donner, D.B. 1995. Vascular endothelial cell growth factor promotes tyrosine phosphorylation of mediators of signal transduction that contain SH2 domains. Association with endothelial cell proliferation. *J. Biol. Chem.* 270: 6729-6733.
5. Holgado, M.M., Emlet, D.R., Moscatello, D.K., Godwin, A.K. and Wong, A.J. 1996. A GRB2-associated docking protein in EGF- and Insulin-receptor signalling. *Nature* 379: 560-564.
6. Carpino, N., Wisniewski, D., Strife, A., Marshak, D., Kobayashi, R., Stillman, B. and Clarkson, B. 1997. p62 Dok-1: a constitutively tyrosine-phosphorylated, GAP-associated protein in chronic myelogenous leukemia progenitor cells. *Cell* 88: 197-204.
7. Yamanashi, Y. and Baltimore, D. 1997. Identification of the Abl- and RasGAP-associated 62 kDa protein as a docking protein, Dok. *Cell* 88: 205-211.
8. Di Cristofano, A., Carpino, N., Dunant, N., Friedland, G., Kobayashi, R., Strife, A., Wisniewski, D., Clarkson, B., Pandolfi, P.P. and Resh, M.D. 1998. Molecular cloning and characterization of p56 Dok-2 defines a new family of RasGAP-binding proteins. *J. Biol. Chem.* 273: 4827-4830.

## CHROMOSOMAL LOCATION

Genetic locus: DOK2 (human) mapping to 8p21.3.

## SOURCE

p-Dok-2 (Tyr 299) is a rabbit polyclonal antibody raised against a short amino acid sequence containing phosphorylated Tyr 299 of Dok-2 of human origin.

## PRODUCT

Each vial contains 100 µg IgG in 1.0 ml of PBS with < 0.1% sodium azide and 0.1% gelatin.

## APPLICATIONS

p-Dok-2 (Tyr 299) is recommended for detection of Tyr 299 phosphorylated Dok-2 of human origin by Western Blotting (starting dilution 1:200, dilution range 1:100-1:1000), immunoprecipitation [1–2 µg per 100–500 µg of total protein (1 ml of cell lysate)], immunofluorescence and immunohistochemistry (including paraffin-embedded sections) (starting dilution 1:50, dilution range 1:50-1:500).

Suitable for use as control antibody for Dok-2 siRNA (h): sc-35211.

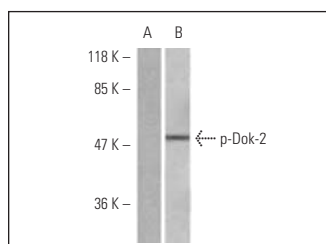
Molecular Weight of p-Dok-2: 56 kDa.

Positive Controls: starved K-562 whole cell lysate or human breast carcinoma tissue.

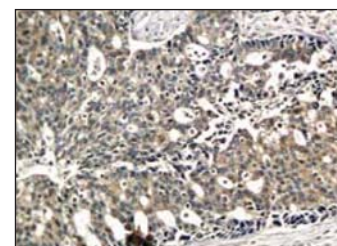
## RECOMMENDED SECONDARY REAGENTS

To ensure optimal results, the following support (secondary) reagents are recommended: 1) Western Blotting: use goat anti-rabbit IgG-HRP: sc-2004 (dilution range: 1:2000-1:100,000) or Cruz Marker™ compatible goat anti-rabbit IgG-HRP: sc-2030 (dilution range: 1:2000-1:5000), Cruz Marker™ Molecular Weight Standards: sc-2035, TBS Blotto B Blocking Reagent: sc-2335 (use 50 mM NaF, sc-24988, as diluent) and Western Blotting Luminol Reagent: sc-2048. 2) Immunoprecipitation: use Protein A/G PLUS-Agarose: sc-2003 (0.5 ml agarose/2.0 ml). 3) Immunofluorescence: use goat anti-rabbit IgG-FITC: sc-2012 (dilution range: 1:100-1:400) or goat anti-rabbit IgG-TR: sc-2780 (dilution range: 1:100-1:400) with UltraCruz™ Mounting Medium: sc-24941. 4) Immunohistochemistry: use ImmunoCruz™: sc-2051 or ABC: sc-2018 rabbit IgG Staining Systems.

## DATA



p-Dok-2 (Tyr 299): sc-101765. Western blot analysis of phosphorylated Dok-2 expression in K-562 (A) and starved K-562 (B) whole cell lysates.



p-Dok-2 (Tyr 299): sc-101765. Immunoperoxidase staining of formalin-fixed, paraffin-embedded human breast carcinoma tissue showing nuclear staining.

## STORAGE

Store at 4° C, \*\*DO NOT FREEZE\*\*. Stable for one year from the date of shipment. Non-hazardous. No MSDS required.

## RESEARCH USE

For research use only, not for use in diagnostic procedures.