

# ATAT1 (B-20): sc-101911

## BACKGROUND

Making up nearly 6% of the human genome, chromosome 6 contains around 1,200 genes within 170 million base pairs of sequence. Deletion of a portion of the q arm of chromosome 6 is associated with early onset intestinal cancer suggesting the presence of a cancer susceptibility locus. Porphyria cutanea tarda is associated with chromosome 6 through the HFE gene which, when mutated, predisposes an individual to developing this porphyria. Notably, the PARK2 gene, which is associated with Parkinson's disease, and the genes encoding the major histocompatibility complex proteins, which are key molecular components of the immune system and determine predisposition to rheumatic diseases, are also located on chromosome 6. Stickler syndrome, 21-hydroxylase deficiency and maple syrup urine disease are also associated with genes on chromosome 6. A bipolar disorder susceptibility locus has been identified on the q arm of chromosome 6. ATAT1 is a 421 amino acid protein and the ATAT1 gene is located on chromosome 6.

## REFERENCES

1. Mungall, A.J., et al. 2003. The DNA sequence and analysis of human chromosome 6. *Nature* 425: 805-811.
2. Vuoristo, M.M., et al. 2004. A stop codon mutation in COL11A2 induces exon skipping and leads to non-ocular Stickler syndrome. *Am. J. Med. Genet. A* 130: 160-164.
3. McQueen, M.B., et al. 2005. Combined analysis from eleven linkage studies of bipolar disorder provides strong evidence of susceptibility loci on chromosomes 6q and 8q. *Am. J. Hum. Genet.* 77: 582-595.
4. Batts, K.P. 2007. Iron overload syndromes and the liver. *Mod. Pathol.* 20 (Suppl. 1): S31-S39.
5. Olsson, K.S., et al. 2007. The HLA-A1-B8 haplotype hitchhiking with the hemochromatosis mutation: does it affect the phenotype? *Eur. J. Haematol.* 79: 429-434.
6. Park, E., et al. 2007. Modulation of Parkin gene expression in noradrenergic neuronal cells. *Int. J. Dev. Neurosci.* 25: 491-497.
7. Safadi, S.S. and Shaw, G.S. 2007. A disease state mutation unfolds the Parkin ubiquitin-like domain. *Biochemistry* 46: 14162-14169.
8. Bläker, H., et al. 2008. Recurrent deletions at 6q in early age of onset non-HNPCC- and non-FAP-associated intestinal carcinomas. Evidence for a novel cancer susceptibility locus at 6q14-q22. *Genes Chromosomes Cancer* 47: 159-164.

## CHROMOSOMAL LOCATION

Genetic locus: ATAT1 (human) mapping to 6p21.33; Atat1 (mouse) mapping to 17 B1.

## SOURCE

ATAT1 (B-20) is a purified rabbit polyclonal antibody raised against ATAT1 of human origin.

## RESEARCH USE

For research use only, not for use in diagnostic procedures.

## PRODUCT

Each vial contains 100 µg IgG in 1.0 ml PBS with < 0.1% sodium azide, 0.1% gelatin and < 0.02% sucrose.

## APPLICATIONS

ATAT1 (B-20) is recommended for detection of ATAT1 of mouse, rat, human and canine origin by Western Blotting (starting dilution 1:200, dilution range 1:100-1:1000), immunoprecipitation [1-2 µg per 100-500 µg of total protein (1 ml of cell lysate)] and solid phase ELISA (starting dilution 1:30, dilution range 1:30-1:3000).

Suitable for use as control antibody for ATAT1 siRNA (h): sc-95272, Atat1 siRNA (m): sc-108799, ATAT1 shRNA Plasmid (h): sc-95272-SH, Atat1 shRNA Plasmid (m): sc-108799-SH, ATAT1 shRNA (h) Lentiviral Particles: sc-95272-V and Atat1 shRNA (m) Lentiviral Particles: sc-108799-V.

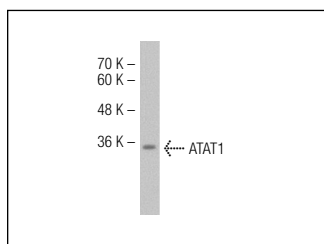
Molecular Weight of ATAT1 isoforms: 34-47 kDa.

Positive Controls: Hep G2 cell lysate: sc-2227.

## RECOMMENDED SECONDARY REAGENTS

To ensure optimal results, the following support (secondary) reagents are recommended: 1) Western Blotting: use goat anti-rabbit IgG-HRP: sc-2004 (dilution range: 1:2000-1:100,000) or Cruz Marker™ compatible goat anti-rabbit IgG-HRP: sc-2030 (dilution range: 1:2000-1:5000), Cruz Marker™ Molecular Weight Standards: sc-2035, TBS Blotto A Blocking Reagent: sc-2333 and Western Blotting Luminol Reagent: sc-2048. 2) Immunoprecipitation: use Protein A/G PLUS-Agarose: sc-2003 (0.5 ml agarose/2.0 ml).

## DATA



ATAT1 (B-20): sc-101911. Western blot analysis of ATAT1 expression in Hep G2 whole cell lysate.

## STORAGE

Store at 4° C, **\*\*DO NOT FREEZE\*\***. Stable for one year from the date of shipment. Non-hazardous. No MSDS required.

## PROTOCOLS

See our web site at [www.scbt.com](http://www.scbt.com) or our catalog for detailed protocols and support products.