

CBLL1 (M-25): sc-101912

BACKGROUND

CBLL1 (Casitas B-lineage lymphoma-transforming sequence-like protein 1), also known as HAKAI (meaning "destruction" in Japanese), or RNF188 (RING finger protein 188), is a 491 amino acid protein that contains one C₂H₂-type zinc finger and one RING-type zinc finger. CBLL1 is believed to function as an E3 ubiquitin-protein ligase that accepts a ubiquitin residue from an E2 ubiquitin-conjugating enzyme and immediately transfers that residue to a protein that is targeted for degradation. More specifically, upon activation of c-Src, CBLL1 interacts with and ubiquitinates tyrosine-phosphorylated E-cadherin, thereby targeting the E-cadherin complex for endocytosis and disrupting epithelial cell-cell contacts. Via its role as an E-cadherin regulator, CBLL1 participates in cell adhesion and may also be involved in the regulation of epithelial-mesenchymal transitions.

REFERENCES

1. Fujita, Y., Krause, G., Scheffner, M., Zechner, D., Leddy, H.E., Behrens, J., Sommer, T. and Birchmeier, W. 2002. Hakai, a c-Cbl-like protein, ubiquitinates and induces endocytosis of the E-cadherin complex. *Nat. Cell Biol.* 4: 222-231.
2. Pece, S. and Gutkind, J.S. 2002. E-cadherin and Hakai: signalling, remodeling or destruction? *Nat. Cell Biol.* 4: E72-E74.
3. Online Mendelian Inheritance in Man, OMIM™. 2002. Johns Hopkins University, Baltimore, MD. MIM Number: 606872. World Wide Web URL: <http://www.ncbi.nlm.nih.gov/omim/>
4. Frame, M.C. 2004. Newest findings on the oldest oncogene; how activated Src does it. *J. Cell Sci.* 117: 989-998.
5. Carter, O., Bailey, G.S. and Dashwood, R.H. 2004. The dietary phytochemical chlorophyllin alters E-cadherin and β -catenin expression in human colon cancer cells. *J. Nutr.* 134: 3441S-3444S.
6. Heo, H.S., Kim, J.H., Lee, Y.J., Kim, S.H., Cho, Y.S. and Kim, C.G. 2005. Microarray profiling of genes differentially expressed during erythroid differentiation of murine erythroleukemia cells. *Mol. Cells* 20: 57-68.
7. Okoruwa, O.E., Weston, M.D., Sanjeevi, D.C., Millemon, A.R., Fritsch, B., Hallworth, R. and Beisel, K.W. 2008. Evolutionary insights into the unique electromotility motor of mammalian outer hair cells. *Evol. Dev.* 10: 300-315.

CHROMOSOMAL LOCATION

Genetic locus: CBLL1 (human) mapping to 7q22.3; Cbl1 (mouse) mapping to 12 A3.

SOURCE

CBLL1 (M-25) is a purified rabbit polyclonal antibody raised against CBLL1 of human origin.

PRODUCT

Each vial contains 100 μ g IgG in 1.0 ml PBS with < 0.1% sodium azide, 0.1% gelatin and < 0.02% sucrose.

APPLICATIONS

CBLL1 (M-25) is recommended for detection of CBLL1 of mouse, rat, human and dog origin by Western Blotting (starting dilution 1:200, dilution range 1:100-1:1000), immunoprecipitation [1-2 μ g per 100-500 μ g of total protein (1 ml of cell lysate)] and solid phase ELISA (starting dilution 1:30, dilution range 1:30-1:3000).

Suitable for use as control antibody for CBLL1 siRNA (h): sc-89853, CBLL1 siRNA (m): sc-142035, CBLL1 shRNA Plasmid (h): sc-89853-SH, CBLL1 shRNA Plasmid (m): sc-142035-SH, CBLL1 shRNA (h) Lentiviral Particles: sc-89853-V and CBLL1 shRNA (m) Lentiviral Particles: sc-142035-V.

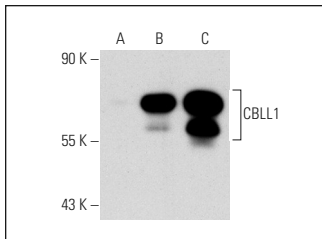
Molecular Weight of CBLL1: 55 kDa.

Positive Controls: Hep G2 cell lysate: sc-2227, CBLL1 (h): 293T Lysate: sc-114604 or HeLa whole cell lysate: sc-2200.

RECOMMENDED SECONDARY REAGENTS

To ensure optimal results, the following support (secondary) reagents are recommended: 1) Western Blotting: use goat anti-rabbit IgG-HRP: sc-2004 (dilution range: 1:2000-1:100,000) or Cruz Marker™ compatible goat anti-rabbit IgG-HRP: sc-2030 (dilution range: 1:2000-1:5000), Cruz Marker™ Molecular Weight Standards: sc-2035, TBS Blotto A Blocking Reagent: sc-2333 and Western Blotting Luminol Reagent: sc-2048. 2) Immunoprecipitation: use Protein A/G PLUS-Agarose: sc-2003 (0.5 ml agarose/2.0 ml).

DATA



CBLL1 (M-25): sc-101912. Western blot analysis of CBLL1 expression in non-transfected 293T: sc-117752 (A), human CBLL1 transfected 293T: sc-114604 (B) and HeLa (C) whole cell lysates.

STORAGE

Store at 4° C, **DO NOT FREEZE**. Stable for one year from the date of shipment. Non-hazardous. No MSDS required.

RESEARCH USE

For research use only, not for use in diagnostic procedures.

MONOS
Satisfaction
Guaranteed

Try **CBLL1 (3B12): sc-517157**, our highly recommended monoclonal alternative to CBLL1 (M-25).