

# CELF3 (G-25): sc-101915

## BACKGROUND

CELF3 (CUG-BP- and ETR-3-like factor 3), also known as TNRC4 (trinucleotide repeat containing 4), CAGH4 (CAG repeat protein 4), ETR-1 (ELAV-type RNA-binding protein 1), ERDA4 (expanded repeat domain protein CAG/CTG 4) or BRUNOL1 (Bruno-like protein 1), is an RNA-binding protein that belongs to the CELF/BRUNOL family of proteins. Expressed specifically in brain, CELF3 contains three RRM (RNA recognition motif) domains (two at the N-terminus and one at the C-terminus) and localizes to the nucleus and the cytoplasm. As is characteristic of the CELF/BRUNOL family, CELF3 binds specifically to muscle-specific splicing enhancer (MSE)-containing RNAs and is believed to play a role in the regulation of pre-mRNA alternative splicing. In addition, CELF3 may participate in translation and mRNA editing. Due to alternative splicing events, CELF3 exists as three isoforms.

## REFERENCES

- Margolis, R.L., Abraham, M.R., Gatchell, S.B., Li, S.H., Kidwai, A.S., Breschel, T.S., Stine, O.C., Callahan, C., McInnis, M.G. and Ross, C.A. 1997. cDNAs with long CAG trinucleotide repeats from human brain. *Hum. Genet.* 100: 114-122.
- Good, P.J., Chen, Q., Warner, S.J. and Herring, D.C. 2000. A family of human RNA-binding proteins related to the *Drosophila* BRUNO translational regulator. *J. Biol. Chem.* 275: 28583-28592.
- Ladd, A.N., Charlet, N. and Cooper, T.A. 2001. The CELF family of RNA binding proteins is implicated in cell-specific and developmentally regulated alternative splicing. *Mol. Cell. Biol.* 21: 1285-1296.
- Aldenhoven, J., Chen, Y., Backofen, B. and Moran, C. 2003. Improving the comparative map of porcine chromosome 10 with respect to human chromosomes 1, 9 and 10. *Cytogenet. Genome Res.* 102: 121-127.
- Ladd, A.N., Nguyen, N.H., Malhotra, K. and Cooper, T.A. 2004. CELF6, a member of the CELF family of RNA-binding proteins, regulates muscle-specific splicing enhancer-dependent alternative splicing. *J. Biol. Chem.* 279: 17756-17764.
- Singh, G., Charlet-B, N., Han, J. and Cooper, T.A. 2004. ETR3 and CELF4 protein domains required for RNA binding and splicing activity *in vivo*. *Nucleic Acids Res.* 32: 1232-1241.
- Chapple, J.P., Anthony, K., Martin, T.R., Dev, A., Cooper, T.A. and Gallo, J.M. 2007. Expression, localization and Tau exon 10 splicing activity of the brain RNA-binding protein TNRC4. *Hum. Mol. Genet.* 16: 2760-2769.
- Dev, A., Nayernia, K., Meins, M., Adham, I., Lacone, F. and Engel, W. 2007. Mice deficient for RNA-binding protein Brunol1 show reduction of spermatogenesis but are fertile. *Mol. Reprod. Dev.* 74: 1456-1464.

## CHROMOSOMAL LOCATION

Genetic locus: TNRC4 (human) mapping to 1q21.3; Tnrc4 (mouse) mapping to 3 F2.1.

## STORAGE

Store at 4° C, **\*\*DO NOT FREEZE\*\***. Stable for one year from the date of shipment. Non-hazardous. No MSDS required.

## SOURCE

CELF3 (G-25) is an affinity purified rabbit polyclonal antibody raised against a peptide mapping raised against CELF3 of human origin of CELF3 of human origin.

## PRODUCT

Each vial contains 50 µg IgG in 0.5 ml of PBS with < 0.1% sodium azide, 0.1% gelatin and < 0.02% sucrose.

## APPLICATIONS

CELF3 (G-25) is recommended for detection of CELF3 of mouse, rat, human and dog origin by Western Blotting (starting dilution 1:200, dilution range 1:100-1:1000), immunoprecipitation [1-2 µg per 100-500 µg of total protein (1 ml of cell lysate)] and solid phase ELISA (starting dilution 1:30, dilution range 1:30-1:3000).

Suitable for use as control antibody for CELF3 siRNA (h): sc-88405, CELF3 siRNA (m): sc-142261, CELF3 shRNA Plasmid (h): sc-88405-SH, CELF3 shRNA Plasmid (m): sc-142261-SH, CELF3 shRNA (h) Lentiviral Particles: sc-88405-V and CELF3 shRNA (m) Lentiviral Particles: sc-142261-V.

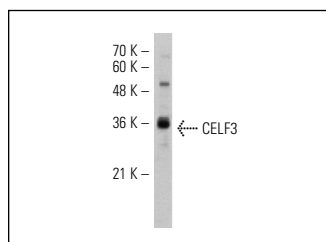
Molecular Weight of CELF3: 50 kDa.

Positive Controls: Jurkat whole cell lysate: sc-2204.

## RECOMMENDED SECONDARY REAGENTS

To ensure optimal results, the following support (secondary) reagents are recommended: 1) Western Blotting: use goat anti-rabbit IgG-HRP: sc-2004 (dilution range: 1:2000-1:100,000) or Cruz Marker™ compatible goat anti-rabbit IgG-HRP: sc-2030 (dilution range: 1:2000-1:5000), Cruz Marker™ Molecular Weight Standards: sc-2035, TBS Blotto A Blocking Reagent: sc-2333 and Western Blotting Luminol Reagent: sc-2048. 2) Immunoprecipitation: use Protein A/G PLUS-Agarose: sc-2003 (0.5 ml agarose/2.0 ml).

## DATA



CELF3 (G-25): sc-101915. Western blot analysis of CELF3 expression in Jurkat whole cell lysate.

## RESEARCH USE

For research use only, not for use in diagnostic procedures.

## PROTOCOLS

See our web site at [www.scbt.com](http://www.scbt.com) or our catalog for detailed protocols and support products.