

CGI-69 (X-21): sc-101916

BACKGROUND

CGI-69, also known as SLC25A39 (solute carrier family 25, member 39) is a multi-pass membrane protein that is expressed in a variety of tissues with predominant expression in kidney and testis. Belonging to the mitochondrial carrier family (a family whose members participate in the transport of molecules across the mitochondrial membrane), CGI-69 localizes to the inner mitochondrial membrane and contains three Solcar repeats. Human CGI-69 shares 86% identity and 98% similarity with its mouse counterpart. Due to alternative splicing events, CGI-69 exists in two isoforms, the longer of which is also known as CGI-69L. As is suggested by its strong expression in testis, CGI-69 may play an important role in mitochondrial function in this tissue.

REFERENCES

1. Yu, X.X., Lewin, D.A., Zhong, A., Brush, J., Schow, P.W., Sherwood, S.W., Pan, G. and Adams, S.H. 2001. Overexpression of the human 2-oxoglutarate carrier lowers mitochondrial membrane potential in HEK-293 cells: contrast with the unique cold-induced mitochondrial carrier CGI-69. *Biochem. J.* 353: 369-375.
2. Online Mendelian Inheritance in Man, OMIM™. 2002. Johns Hopkins University, Baltimore, MD. MIM Number: 610820. World Wide Web URL: <http://www.ncbi.nlm.nih.gov/omim/>
3. Luk, E., Carroll, M., Baker, M. and Culotta, V.C. 2003. Manganese activation of superoxide dismutase 2 in *Saccharomyces cerevisiae* requires MTM1, a member of the mitochondrial carrier family. *Proc. Natl. Acad. Sci. USA* 100: 10353-10357.
4. Haitina, T., Lindblom, J., Renström, T. and Fredriksson, R. 2006. Fourteen novel human members of mitochondrial solute carrier family 25 (SLC25) widely expressed in the central nervous system. *Genomics* 88: 779-790.
5. Gijssels, I., van der Zee, J., Engelborghs, S., Goossens, D., Peeters, K., Mattheijssens, M., Corsmit, E., Del-Favero, J., De Deyn, P.P., Van Broeckhoven, C. and Cruts, M. 2008. Progranulin locus deletion in frontotemporal dementia. *Hum. Mutat.* 29: 53-58.

CHROMOSOMAL LOCATION

Genetic locus: SLC25A39 (human) mapping to 17q21.31; Slc25a39 (mouse) mapping to 11 D.

SOURCE

CGI-69 (X-21) is a purified rabbit polyclonal antibody raised against CGI-69 of human origin.

STORAGE

Store at 4° C, **DO NOT FREEZE**. Stable for one year from the date of shipment. Non-hazardous. No MSDS required.

PROTOCOLS

See our web site at www.scbt.com or our catalog for detailed protocols and support products.

PRODUCT

Each vial contains 50 µg IgG in 500 µl PBS with < 0.1% sodium azide, 0.1% gelatin and < 0.02% sucrose.

APPLICATIONS

CGI-69 (X-21) is recommended for detection of CGI-69 of mouse, rat, human and dog origin by Western Blotting (starting dilution 1:200, dilution range 1:100-1:1000), immunoprecipitation [1-2 µg per 100-500 µg of total protein (1 ml of cell lysate)], immunofluorescence (starting dilution 1:50, dilution range 1:50-1:500), immunohistochemistry (including paraffin-embedded sections) (starting dilution 1:50, dilution range 1:50-1:500) and solid phase ELISA (starting dilution 1:30, dilution range 1:30-1:3000).

Suitable for use as control antibody for CGI-69 siRNA (h): sc-94026, CGI-69 siRNA (m): sc-142306, CGI-69 shRNA Plasmid (h): sc-94026-SH, CGI-69 shRNA Plasmid (m): sc-142306-SH, CGI-69 shRNA (h) Lentiviral Particles: sc-94026-V and CGI-69 shRNA (m) Lentiviral Particles: sc-142306-V.

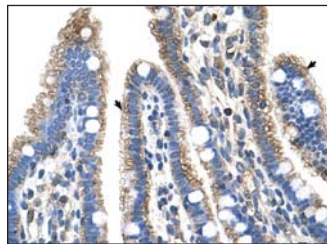
Molecular Weight of CGI-69: 39 kDa.

Positive Controls: Hep G2 cell lysate: sc-2227.

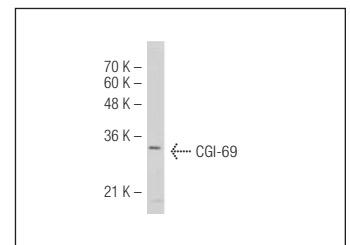
RECOMMENDED SECONDARY REAGENTS

To ensure optimal results, the following support (secondary) reagents are recommended: 1) Western Blotting: use goat anti-rabbit IgG-HRP: sc-2004 (dilution range: 1:2000-1:100,000) or Cruz Marker™ compatible goat anti-rabbit IgG-HRP: sc-2030 (dilution range: 1:2000-1:5000), Cruz Marker™ Molecular Weight Standards: sc-2035, TBS Blotto A Blocking Reagent: sc-2333 and Western Blotting Luminol Reagent: sc-2048. 2) Immunofluorescence: use goat anti-rabbit IgG-FITC: sc-2012 (dilution range: 1:100-1:400) or goat anti-rabbit IgG-TR: sc-2780 (dilution range: 1:100-1:400) with UltraCruz™ Mounting Medium: sc-24941. 3) Immunohistochemistry: use ImmunoCruz™: sc-2051 or ABC: sc-2018 rabbit IgG Staining Systems.

DATA



CGI-69 (X-21): sc-101916. Immunoperoxidase staining of formalin fixed, paraffin-embedded human intestine tissue showing cytoplasmic staining.



CGI-69 (X-21): sc-101916. Western blot analysis of CGI-69 expression in Jurkat whole cell lysate.

RESEARCH USE

For research use only, not for use in diagnostic procedures.