

CPA1 (J-17): sc-101922

BACKGROUND

Human pancreatic procarboxypeptidase A exists as three different active forms, two of which are designated carboxypeptidase A1 (CPA1) and carboxypeptidase A2 (CPA2). CPA1, also known as CPA, is a 419 amino acid secreted monomeric protein that is highly expressed in pancreatic tissue. Functioning as a pancreatic exopeptidase, CPA1 uses zinc as a cofactor to catalyze the release of C-terminal amino acids from a variety of proteins, thereby playing a key role in protein digestion and degradation. Via its catalytic activity, CPA1 is also thought to be involved in zymogen (proenzyme) inhibition, probably functioning to block enzyme activation pathways. Abnormal levels of CPA1 are associated with pancreatic cancer, suggesting a possible role in either tumor progression or tumor suppression events.

REFERENCES

1. Stewart, E.A., Craik, C.S., Hake, L. and Bowcock, A.M. 1990. Human carboxypeptidase A identifies a BgIII RFLP and maps to 7q31-qter. *Am. J. Hum. Genet.* 46: 795-800.
2. Moulard, M., Michon, T., Kerfelec, B. and Chapus, C. 1990. Further studies on the human pancreatic binary complexes involving procarboxypeptidase A. *FEBS Lett.* 261: 179-183.
3. Laethem, R.M., Blumenkopf, T.A., Cory, M., Elwell, L., Moxham, C.P., Ray, P.H., Walton, L.M. and Smith, G.K. 1996. Expression and characterization of human pancreatic procarboxypeptidase A1 and procarboxypeptidase A2. *Arch. Biochem. Biophys.* 332: 8-18.
4. Online Mendelian Inheritance in Man, OMIM™. 2002. Johns Hopkins University, Baltimore, MD. MIM Number: 114850. World Wide Web URL: <http://www.ncbi.nlm.nih.gov/omim/>
5. Shamamian, P., Goldberg, J.D., Ye, X.Y., Stewart, J.D., White, P.J. and Gilvarg, C. 2006. Evaluation of pro-carboxypeptidase A and carboxypeptidase A as serologic markers for adenocarcinoma of the pancreas. *HPB* 8: 451-457.
6. Zhou, Q., Law, A.C., Rajagopal, J., Anderson, W.J., Gray, P.A. and Melton, D.A. 2007. A multipotent progenitor domain guides pancreatic organogenesis. *Dev. Cell* 13: 103-114.
7. Vovchuk, I.L. and Petrov, S.A. 2008. Role of carboxypeptidases in carcinogenesis. *Biomed. Khim.* 54: 167-178.
8. Garabelli, P.J., Modrall, J.G., Penninger, J.M., Ferrario, C.M. and Chappell, M.C. 2008. Distinct roles for angiotensin-converting enzyme 2 and carboxypeptidase A in the processing of angiotensins within the murine heart. *Exp. Physiol.* 93: 613-621.
9. Liu, J.Q. and Wulff, G. 2008. Functional mimicry of carboxypeptidase A by a combination of transition state stabilization and a defined orientation of catalytic moieties in molecularly imprinted polymers. *J. Am. Chem. Soc.* 130: 8044-8054.

STORAGE

Store at 4° C, ****DO NOT FREEZE****. Stable for one year from the date of shipment. Non-hazardous. No MSDS required.

CHROMOSOMAL LOCATION

Genetic locus: CPA1 (human) mapping to 7q32.2.

SOURCE

CPA1 (J-17) is a purified rabbit polyclonal antibody raised against CPA1 of human origin.

PRODUCT

Each vial contains 50 µg IgG in 500 µl PBS with < 0.1% sodium azide, 0.1% gelatin and < 0.02% sucrose.

APPLICATIONS

CPA1 (J-17) is recommended for detection of CPA1 of human origin by Western Blotting (starting dilution 1:200, dilution range 1:100-1:1000), immunoprecipitation [1-2 µg per 100-500 µg of total protein (1 ml of cell lysate)] and solid phase ELISA (starting dilution 1:30, dilution range 1:30-1:3000).

Suitable for use as control antibody for CPA1 siRNA (h): sc-89710, CPA1 shRNA Plasmid (h): sc-89710-SH and CPA1 shRNA (h) Lentiviral Particles: sc-89710-V.

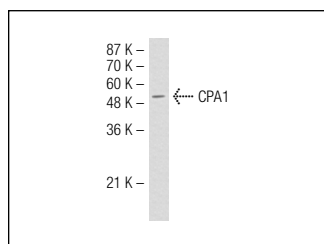
Molecular Weight of CPA1: 47 kDa.

Positive Controls: Hep G2 cell lysate: sc-2227.

RECOMMENDED SECONDARY REAGENTS

To ensure optimal results, the following support (secondary) reagents are recommended: 1) Western Blotting: use goat anti-rabbit IgG-HRP: sc-2004 (dilution range: 1:2000-1:100,000) or Cruz Marker™ compatible goat anti-rabbit IgG-HRP: sc-2030 (dilution range: 1:2000-1:5000), Cruz Marker™ Molecular Weight Standards: sc-2035, TBS Blotto A Blocking Reagent: sc-2333 and Western Blotting Luminol Reagent: sc-2048. 2) Immunoprecipitation: use Protein A/G PLUS-Agarose: sc-2003 (0.5 ml agarose/2.0 ml).

DATA



CPA1 (J-17): sc-101922. Western blot analysis of CPA1 expression in Hep G2 whole cell lysate.

RESEARCH USE

For research use only, not for use in diagnostic procedures.