

# MAMLD1 (D-18): sc-101928

## BACKGROUND

MAMLD1 (mastermind-like domain-containing protein 1), also known as CXorf6, CG1 or F18, is a 701 amino acid member of the mastermind family of proteins. Expressed in brain, heart and skeletal muscle, MAMLD1 co-localizes with MAML2 (mastermind-like protein 2) to nuclear bodies and is thought to function as a transcriptional co-activator that enhances promoter function. Via its ability to promote transcription, MAMLD1 may regulate testosterone production, possibly playing a role in developmental events, such as spermatogenesis. Defects in the gene encoding MAMLD1 are the cause of X-linked hypospadias, a complex disorder in which the urethra opens on the central side of the penis. Multiple isoforms of MAMLD1 exist due to alternative splicing.

## REFERENCES

- Laporte, J., Hu, L.J., Kretz, C., Mandel, J.L., Kioschis, P., Coy, J.F., Klauck, S.M., Poustka, A. and Dahl, N. 1996. A gene mutated in X-linked myotubular myopathy defines a new putative tyrosine phosphatase family conserved in yeast. *Nat. Genet.* 13: 175-182.
- Laporte, J., Kioschis, P., Hu, L.J., Kretz, C., Carlsson, B., Poustka, A., Mandel, J.L. and Dahl, N. 1997. Cloning and characterization of an alternatively spliced gene in proximal Xq28 deleted in two patients with intersexual genitalia and myotubular myopathy. *Genomics.* 41: 458-462.
- Online Mendelian Inheritance in Man, OMIM™. 2002. Johns Hopkins University, Baltimore, MD. MIM Number: 300120. World Wide Web URL: <http://www.ncbi.nlm.nih.gov/omim/>
- Tsai, T.C., Horinouchi, H., Noguchi, S., Minami, N., Murayama, K., Hayashi, Y.K., Nonaka, I. and Nishino, I. 2005. Characterization of MTM1 mutations in 31 Japanese families with myotubular myopathy, including a patient carrying 240 kb deletion in Xq28 without male hypogonadism. *Neuromuscul. Disord.* 15: 245-252.
- Fukami, M., Wada, Y., Miyabayashi, K., Nishino, I., Hasegawa, T., Nordenskjöld, A., Camerino, G., Kretz, C., Buj-Bello, A., Laporte, J., Yamada, G., Morohashi, K. and Ogata, T. 2006. CXorf6 is a causative gene for hypospadias. *Nat. Genet.* 38: 1369-1371.
- O'Shaughnessy, P.J., Baker, P.J., Monteiro, A., Cassie, S., Bhattacharya, S. and Fowler, P.A. 2007. Developmental changes in human fetal testicular cell numbers and messenger ribonucleic acid levels during the second trimester. *J. Clin. Endocrinol. Metab.* 92: 4792-4801.
- Fukami, M., Wada, Y., Okada, M., Kato, F., Katsumata, N., Baba, T., Morohashi, K., Laporte, J., Kitagawa, M. and Ogata, T. 2008. Mastermind-like domain-containing 1 (MAMLD1 or CXorf6) transactivates the HES3 promoter, augments testosterone production, and contains the SF1 target sequence. *J. Biol. Chem.* 283: 5525-5532.

## CHROMOSOMAL LOCATION

Genetic locus: MAMLD1 (human) mapping to Xq28.

## STORAGE

Store at 4° C, \*\*DO NOT FREEZE\*\*. Stable for one year from the date of shipment. Non-hazardous. No MSDS required.

## SOURCE

MAMLD1 (D-18) is a purified rabbit polyclonal antibody raised against MAMLD1 of human origin.

## PRODUCT

Each vial contains 100 µg IgG in 1.0 ml PBS with < 0.1% sodium azide, 0.1% gelatin and < 0.02% sucrose.

## APPLICATIONS

MAMLD1 (D-18) is recommended for detection of MAMLD1 of human origin by Western Blotting (starting dilution 1:200, dilution range 1:100-1:1000), immunoprecipitation [1-2 µg per 100-500 µg of total protein (1 ml of cell lysate)] and solid phase ELISA (starting dilution 1:30, dilution range 1:30-1:3000).

Suitable for use as control antibody for MAMLD1 siRNA (h): sc-91240, MAMLD1 shRNA Plasmid (h): sc-91240-SH and MAMLD1 shRNA (h) Lentiviral Particles: sc-91240-V.

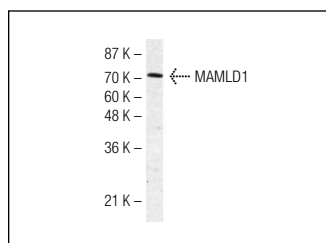
Molecular Weight of MAMLD1: 74 kDa.

Positive Controls: Jurkat whole cell lysate: sc-2204.

## RECOMMENDED SECONDARY REAGENTS

To ensure optimal results, the following support (secondary) reagents are recommended: 1) Western Blotting: use goat anti-rabbit IgG-HRP: sc-2004 (dilution range: 1:2000-1:100,000) or Cruz Marker™ compatible goat anti-rabbit IgG-HRP: sc-2030 (dilution range: 1:2000-1:5000), Cruz Marker™ Molecular Weight Standards: sc-2035, TBS Blotto A Blocking Reagent: sc-2333 and Western Blotting Luminol Reagent: sc-2048. 2) Immunoprecipitation: use Protein A/G PLUS-Agarose: sc-2003 (0.5 ml agarose/2.0 ml).

## DATA



MAMLD1 (D-18): sc-101928. Western blot analysis of MAMLD1 expression in Jurkat whole cell lysate.

## RESEARCH USE

For research use only, not for use in diagnostic procedures.

## PROTOCOLS

See our web site at [www.scbt.com](http://www.scbt.com) or our catalog for detailed protocols and support products.