

EGFL8 (H-20): sc-101944

BACKGROUND

The epidermal growth factor (EGF) repeat-containing proteins constitute an expanding family of proteins that are involved in several cellular activities, such as blood coagulation, fibrinolysis, cell adhesion and neural and vertebrate development. EGFL8 (EGF-like domain-containing protein 8), also known as C6orf8, NG3 and VE-statin-2, is a 293 amino acid secreted protein that contains 2 EGF-like domains and one EMI domain. Via its EGF and EMI domains, EGFL8 may participate in protein-protein interactions that correlate with cellular proliferation and developmental signaling events. In mice, EGFL8 is expressed predominately in brain, kidney, lung and thymus.

REFERENCES

- Appella, E., Weber, I.T. and Blasi, F. 1988. Structure and function of epidermal growth factor-like regions in proteins. *FEBS Lett.* 231: 1-4.
- Davis, C.G. 1990. The many faces of epidermal growth factor repeats. *New Biol.* 2: 410-419.
- Online Mendelian Inheritance in Man, OMIM™. 2002. Johns Hopkins University, Baltimore, MD. MIM Number: 609897. World Wide Web URL: <http://www.ncbi.nlm.nih.gov/omim/>
- Callebaut, I., Mignotte, V., Souchet, M. and Mornon, J.P. 2003. EMI domains are widespread and reveal the probable orthologs of the *Caenorhabditis elegans* CED-1 protein. *Biochem. Biophys. Res. Commun.* 300: 619-623.
- Xie, T., Rowen, L., Aguado, B., Ahearn, M.E., Madan, A., Qin, S., Campbell, R.D. and Hood, L. 2003. Analysis of the gene-dense major histocompatibility complex class III region and its comparison to mouse. *Genome Res.* 13: 2621-2636.
- Fitch, M.J., Campagnolo, L., Kuhnert, F. and Stuhlmann, H. 2004. EGFL7, a novel epidermal growth factor-domain gene expressed in endothelial cells. *Dev. Dyn.* 230: 316-324.
- Zhang, Z. and Henzel, W.J. 2004. Signal peptide prediction based on analysis of experimentally verified cleavage sites. *Protein Sci.* 13: 2819-2824.

CHROMOSOMAL LOCATION

Genetic locus: EGFL8 (human) mapping to 6p21.32; Egfl8 (mouse) mapping to 17 B1.

SOURCE

EGFL8 (H-20) is an affinity purified rabbit polyclonal antibody raised against a peptide mapping raised against EGFL8 of human origin.

PRODUCT

Each vial contains 100 µg IgG in 1.0 ml of PBS with < 0.1% sodium azide, 0.1% gelatin and <0.02% sucrose.

STORAGE

Store at 4° C, ****DO NOT FREEZE****. Stable for one year from the date of shipment. Non-hazardous. No MSDS required.

APPLICATIONS

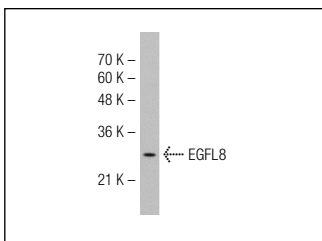
EGFL8 (H-20) is recommended for detection of EGFL8 of mouse, rat and human origin by Western Blotting (starting dilution 1:200, dilution range 1:100-1:1000), immunoprecipitation [1-2 µg per 100-500 µg of total protein (1 ml of cell lysate)], immunofluorescence (starting dilution 1:50, dilution range 1:50-1:500), immunohistochemistry (including paraffin-embedded sections) (starting dilution 1:50, dilution range 1:50-1:500) and solid phase ELISA (starting dilution 1:30, dilution range 1:30-1:3000).

Suitable for use as control antibody for EGFL8 siRNA (h): sc-95064, EGFL8 siRNA (m): sc-144600, EGFL8 shRNA Plasmid (h): sc-95064-SH, EGFL8 shRNA Plasmid (m): sc-144600-SH, EGFL8 shRNA (h) Lentiviral Particles: sc-95064-V and EGFL8 shRNA (m) Lentiviral Particles: sc-144600-V.

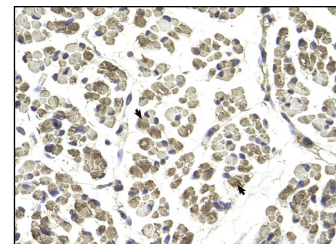
Molecular Weight of EGFL8: 32 kDa.

Positive Controls: Jurkat whole cell lysate: sc-2204.

DATA



EGFL8 (H-20): sc-101944. Western blot analysis of EGFL8 expression in Jurkat whole cell lysate.



EGFL8 (H-20): sc-101944. Immunoperoxidase staining of formalin fixed, paraffin-embedded human muscle tissue showing cytoplasmic staining.

RESEARCH USE

For research use only, not for use in diagnostic procedures.

PROTOCOLS

See our web site at www.scbt.com or our catalog for detailed protocols and support products.

MONOS
Satisfaction
Guaranteed

Try **EGFL8 (F-6): sc-377016**, our highly recommended monoclonal alternative to EGFL8 (H-20).