

# JK-1 (Y-20): sc-101986

## BACKGROUND

Esophageal squamous cell carcinoma (ESCC) is cancer of the flat cells lining the esophagus, and is currently the ninth most frequent cancer in the world. While environmental risk factors, such as alcohol drinking and cigarette smoking, increase chances of ESCC, several genes are believed to be involved in the origin and/or progression of ESCC. The proteins encoded by these genes include p53, DCC, DEC1, DLEC1, p16 and TGF $\beta$  RII. JK-1, also known as FAM134B, is a 497 amino acid multi-pass membrane protein. JK-1 overexpression in ESCC cell lines causes increased cell growth rate, indicating a possible role in ESCC progression. JK-1 is expressed as two isoforms produced by alternative splicing.

## REFERENCES

- Jiang, W., Kahn, S.M., Tomita, N., Zhang, Y.J., Lu, S.H. and Weinstein, I.B. 1992. Amplification and expression of the human cyclin D gene in esophageal cancer. *Cancer Res.* 52: 2980-2983.
- Online Mendelian Inheritance in Man, OMIM™. 2002. Johns Hopkins University, Baltimore, MD. MIM Number: 133239: World Wide Web URL: <http://www.ncbi.nlm.nih.gov/omim/>
- Tang, W.K., Chui, C.H., Fatima, S., Kok, S.H., Pak, K.C., Ou, T.M., Hui, K.S., Wong, M.M., Wong, J., Law, S., Tsao, S.W., Lam, K.Y., Beh, P.S., Srivastava, G., Chan, A.S., Ho, K.P. and Tang, J.C. 2007. Oncogenic properties of a novel gene JK-1 located in chromosome 5p and its overexpression in human esophageal squamous cell carcinoma. *Int. J. Mol. Med.* 19: 915-923.
- Hoshino, I., Matsubara, H., Akutsu, Y., Nishimori, T., Yoneyama, Y., Murakami, K., Sakata, H., Matsushita, K., Komatsu, A., Brooks, R. and Ochiai, T. 2008. Role of histone deacetylase inhibitor in adenovirus-mediated p53 gene therapy in esophageal cancer. *Anticancer Res.* 28: 665-671.
- Cummings, L.C. and Cooper, G.S. 2008. Descriptive epidemiology of esophageal carcinoma in the Ohio Cancer Registry. *Cancer Detect. Prev.* 32: 87-92.
- Fan, Y.J., Song, X., Li, J.L., Li, X.M., Liu, B., Wang, R., Fan, Z.M. and Wang, L.D. 2008. Esophageal and gastric cardia cancers on 4238 Chinese patients residing in municipal and rural regions: A histopathological comparison during 24-year period. *World J. Surg.* 32: 1980-1988.
- Lyronis, I.D., Baritaki, S., Bizakis, I., Krambovitis, E. and Spandidos, D.A. 2008. K-Ras mutation, HPV infection and smoking or alcohol abuse positively correlate with esophageal squamous carcinoma. *Pathol. Oncol. Res.* E-published ahead of print.

## CHROMOSOMAL LOCATION

Genetic locus: FAM134B (human) mapping to 5p15.1; Fam134b (mouse) mapping to 15 B1.

## STORAGE

Store at 4° C, \*\*DO NOT FREEZE\*\*. Stable for one year from the date of shipment. Non-hazardous. No MSDS required.

## SOURCE

JK-1 (Y-20) is a purified rabbit polyclonal antibody raised against JK-1 of human origin.

## PRODUCT

Each vial contains 100  $\mu$ g IgG in 1.0 ml PBS with < 0.1% sodium azide, 0.1% gelatin and < 0.02% sucrose.

## APPLICATIONS

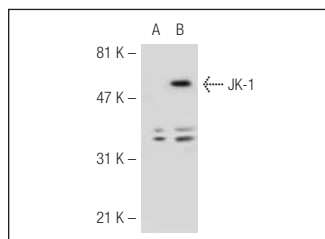
JK-1 (Y-20) is recommended for detection of JK-1 of mouse, rat, human and dog origin by Western Blotting (starting dilution 1:200, dilution range 1:100-1:1000), immunoprecipitation [1-2  $\mu$ g per 100-500  $\mu$ g of total protein (1 ml of cell lysate)], immunofluorescence (starting dilution 1:50, dilution range 1:50-1:500), immunohistochemistry (including paraffin-embedded sections) (starting dilution 1:50, dilution range 1:50-1:500) and solid phase ELISA (starting dilution 1:30, dilution range 1:30-1:3000).

Suitable for use as control antibody for JK-1 siRNA (h): sc-92031, JK-1 siRNA (m): sc-108551, JK-1 shRNA Plasmid (h): sc-92031-SH, JK-1 shRNA Plasmid (m): sc-108551-SH, JK-1 shRNA (h) Lentiviral Particles: sc-92031-V and JK-1 shRNA (m) Lentiviral Particles: sc-108551-V.

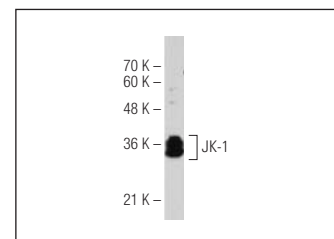
Molecular Weight of JK-1: 55 kDa.

Positive Controls: Jurkat whole cell lysate: sc-2204.

## DATA



JK-1 (Y-20): sc-101986. Western blot analysis of JK-1 expression in non-transfected: sc-117752 (A) and human JK-1 transfected: sc-117434 (B) 293T whole cell lysates.



JK-1 (Y-20): sc-101986. Western blot analysis of JK-1 expression in Jurkat whole cell lysate.

## RESEARCH USE

For research use only, not for use in diagnostic procedures.

## PROTOCOLS

See our web site at [www.scbt.com](http://www.scbt.com) or our catalog for detailed protocols and support products.