

KLHL26 (A-17): sc-101999

BACKGROUND

KLHL26, also known as Kelch-like protein 26, is a 615 amino acid protein similar to similar to the *Drosophila* Kelch protein. KLHL26 contains one BACK (BTB/Kelch associated) domain, which may indicate a role in substrate orientation in E3 ligase complexes. KLHL26 also contains six Kelch repeats and one BTB (POZ) domain. The BTB (broad-complex, Tramtrack and bric a brac) domain, also known as the POZ (Poxvirus and zinc finger) domain, is an N-terminal homodimerization domain that contains multiple copies of Kelch repeats and/or C₂H₂-type zinc fingers. Proteins that contain BTB domains are thought to be involved in transcriptional regulation via control of chromatin structure and function.

REFERENCES

- Albagli, O., Dhordain, P., Deweindt, C., Lecocq, G. and Leprince, D. 1995. The BTB/POZ domain: a new protein-protein interaction motif common to DNA- and Actin-binding proteins. *Cell Growth Differ.* 6: 1193-1198.
- Melnick, A., Ahmad, K.F., Arai, S., Polinger, A., Ball, H., Borden, K.L., Carlile, G.W., Prive, G.G. and Licht, J.D. 2000. In-depth mutational analysis of the promyelocytic leukemia zinc finger BTB/POZ domain reveals motifs and residues required for biological and transcriptional functions. *Mol. Cell Biol.* 20: 6550-6567.
- Adams, J., Kelso, R. and Cooley, L. 2000. The Kelch repeat superfamily of proteins: propellers of cell function. *Trends Cell Biol.* 10: 17-24.
- Prag, S. and Adams, J.C. 2003. Molecular phylogeny of the Kelch-repeat superfamily reveals an expansion of BTB/Kelch proteins in animals. *BMC Bioinformatics* 4: 42.
- Geyer, R., Wee, S., Anderson, S., Yates, J. and Wolf, D.A. 2003. BTB/POZ domain proteins are putative substrate adaptors for Cullin-3 ubiquitin ligases. *Mol. Cell* 12: 783-790.
- Stogios, P.J. and Privé, G.G. 2004. The BACK domain in BTB-Kelch proteins. *Trends Biochem. Sci.* 29: 634-637.
- Lim, J., Hao, T., Shaw, C., Patel, A.J., Szabó, G., Rual, J.F., Fisk, C.J., Li, N., Smolyar, A., Hill, D.E., Barabási, A.L., Vidal, M. and Zoghbi, H.Y. 2006. A protein-protein interaction network for human inherited ataxias and disorders of Purkinje cell degeneration. *Cell* 125: 801-814.

CHROMOSOMAL LOCATION

Genetic locus: KLHL26 (human) mapping to 19p13.11.

SOURCE

KLHL26 (A-17) is a purified rabbit polyclonal antibody raised against KLHL26 of human origin.

PRODUCT

Each vial contains 100 µg IgG in 1.0 ml PBS with < 0.1% sodium azide, 0.1% gelatin and < 0.02% sucrose.

RESEARCH USE

For research use only, not for use in diagnostic procedures.

APPLICATIONS

KLHL26 (A-17) is recommended for detection of KLHL26 of human origin by Western Blotting (starting dilution 1:200, dilution range 1:100-1:1000), immunoprecipitation [1-2 µg per 100-500 µg of total protein (1 ml of cell lysate)] and solid phase ELISA (starting dilution 1:30, dilution range 1:30-1:3000).

Suitable for use as control antibody for KLHL26 siRNA (h): sc-97645, KLHL26 shRNA Plasmid (h): sc-97645-SH and KLHL26 shRNA (h) Lentiviral Particles: sc-97645-V.

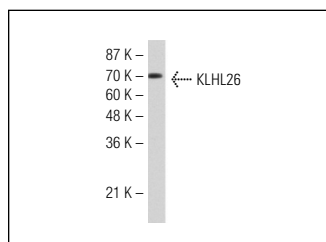
Molecular Weight of KLHL26: 68 kDa.

Positive Controls: Jurkat whole cell lysate: sc-2204.

RECOMMENDED SECONDARY REAGENTS

To ensure optimal results, the following support (secondary) reagents are recommended: 1) Western Blotting: use goat anti-rabbit IgG-HRP: sc-2004 (dilution range: 1:2000-1:100,000) or Cruz Marker™ compatible goat anti-rabbit IgG-HRP: sc-2030 (dilution range: 1:2000-1:5000), Cruz Marker™ Molecular Weight Standards: sc-2035, TBS Blotto A Blocking Reagent: sc-2333 and Western Blotting Luminol Reagent: sc-2048. 2) Immunoprecipitation: use Protein A/G PLUS-Agarose: sc-2003 (0.5 ml agarose/2.0 ml).

DATA



KLHL26 (A-17): sc-101999. Western blot analysis of KLHL26 expression in Jurkat whole cell lysate.

STORAGE

Store at 4° C, ****DO NOT FREEZE****. Stable for one year from the date of shipment. Non-hazardous. No MSDS required.

PROTOCOLS

See our web site at www.scbt.com or our catalog for detailed protocols and support products.