

KLHL28 (Z-16): sc-102000

BACKGROUND

KLHL28, also known as Kelch-like protein 28 or BTB/POZ domain-containing protein 5, is a 571 amino acid protein similar to the *Drosophila* Kelch protein. KLHL26 contains six Kelch repeats and one BTB (POZ) domain. The BTB (broad-complex, Tramtrack and bric a brac) domain, also known as the POZ (poxvirus and zinc finger) domain, is an N-terminal homodimerization domain that contains multiple copies of Kelch repeats and/or C₂H₂-type zinc fingers. Proteins that contain BTB domains are thought to be involved in transcriptional regulation via control of chromatin structure and function. KLHL28 is expressed as two isoforms produced by alternative splicing.

REFERENCES

1. Albagli, O., Dhordain, P., Deweindt, C., Lecocq, G. and Leprince, D. 1995. The BTB/POZ domain: a new protein-protein interaction motif common to DNA- and Actin-binding proteins. *Cell Growth Differ.* 6: 1193-1198.
2. Robinson, D.N. and Cooley, L. 1997. *Drosophila* Kelch is an oligomeric ring canal Actin organizer. *J. Cell Biol.* 138: 799-810.
3. Melnick, A., Ahmad, K.F., Arai, S., Polinger, A., Ball, H., Borden, K.L., Carlile, G.W., Prive, G.G. and Licht, J.D. 2000. In-depth mutational analysis of the promyelocytic leukemia zinc finger BTB/POZ domain reveals motifs and residues required for biological and transcriptional functions. *Mol. Cell Biol.* 20: 6550-6567.
4. Adams, J., Kelso, R. and Cooley, L. 2000. The Kelch repeat superfamily of proteins: propellers of cell function. *Trends Cell Biol.* 10: 17-24.
5. Prag, S. and Adams, J.C. 2003. Molecular phylogeny of the Kelch-repeat superfamily reveals an expansion of BTB/Kelch proteins in animals. *BMC Bioinformatics* 4: 42.
6. Geyer, R., Wee, S., Anderson, S., Yates, J. and Wolf, D.A. 2003. BTB/POZ domain proteins are putative substrate adaptors for Cullin-3 ubiquitin ligases. *Mol. Cell* 12: 783-790.
7. Mora-García, S., Vert, G., Yin, Y., Caño-Delgado, A., Cheong, H. and Chory, J. 2004. Nuclear protein phosphatases with Kelch-repeat domains modulate the response to brassinosteroids in *Arabidopsis*. *Genes Dev.* 18: 448-460.

CHROMOSOMAL LOCATION

Genetic locus: KLHL28 (human) mapping to 14q21.3; Klhl28 (mouse) mapping to 12 C1.

SOURCE

KLHL28 (Z-16) is a purified rabbit polyclonal antibody raised against KLHL28 of human origin.

STORAGE

Store at 4° C, ****DO NOT FREEZE****. Stable for one year from the date of shipment. Non-hazardous. No MSDS required.

PROTOCOLS

See our web site at www.scbt.com or our catalog for detailed protocols and support products.

PRODUCT

Each vial contains 100 µg IgG in 1.0 ml PBS with < 0.1% sodium azide, 0.1% gelatin and < 0.02% sucrose.

APPLICATIONS

KLHL28 (Z-16) is recommended for detection of KLHL28 of mouse, rat, human and dog origin by Western Blotting (starting dilution 1:200, dilution range 1:100-1:1000), immunoprecipitation [1-2 µg per 100-500 µg of total protein (1 ml of cell lysate)] and solid phase ELISA (starting dilution 1:30, dilution range 1:30-1:3000).

Suitable for use as control antibody for KLHL28 siRNA (h): sc-92122, KLHL28 siRNA (m): sc-146527, KLHL28 shRNA Plasmid (h): sc-92122-SH, KLHL28 shRNA Plasmid (m): sc-146527-SH, KLHL28 shRNA (h) Lentiviral Particles: sc-92122-V and KLHL28 shRNA (m) Lentiviral Particles: sc-146527-V.

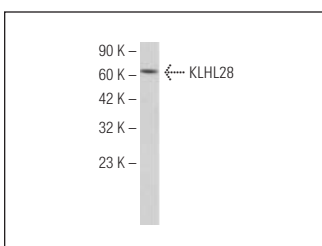
Molecular Weight of KLHL28: 64 kDa.

Positive Controls: Hep G2 cell lysate: sc-2227.

RECOMMENDED SECONDARY REAGENTS

To ensure optimal results, the following support (secondary) reagents are recommended: 1) Western Blotting: use goat anti-rabbit IgG-HRP: sc-2004 (dilution range: 1:2000-1:100,000) or Cruz Marker™ compatible goat anti-rabbit IgG-HRP: sc-2030 (dilution range: 1:2000-1:5000), Cruz Marker™ Molecular Weight Standards: sc-2035, TBS Blotto A Blocking Reagent: sc-2333 and Western Blotting Luminol Reagent: sc-2048. 2) Immunoprecipitation: use Protein A/G PLUS-Agarose: sc-2003 (0.5 ml agarose/2.0 ml).

DATA



KLHL28 (Z-16): sc-102000. Western blot analysis of KLHL28 expression in Hep G2 whole cell lysate.

RESEARCH USE

For research use only, not for use in diagnostic procedures.