

# LAPTM4A (E-21): sc-102005

## BACKGROUND

Lysosomal-associated transmembrane protein 4A (LAPTM4A), also known as Golgi 4-transmembrane spanning transporter MTP, is a 233 amino acid protein belonging to the LAPTM5/LAPTM5 transporter family. LAPTM4A is subcellularly localized to the intracytoplasmic membrane and has the potential to reside in intracellular membrane-bound compartments. LAPTM4A is thought to function as a transporter of nucleosides and/or nucleoside derivatives between the cytosol and the lumen of intracellular compartments. LAPTM4A is predicted to have four transmembrane domains, with the C-terminal domain being required for retention of the protein within intracellular membranes.

## REFERENCES

- Nagase, T., Miyajima, N., Tanaka, A., Sazuka, T., Seki, N., Sato, S., Tabata, S., Ishikawa, K., Kawarabayasi, Y. and Kotani, H. 1995. Prediction of the coding sequences of unidentified human genes. III. The coding sequences of 40 new genes (KIAA0081-KIAA0120) deduced by analysis of cDNA clones from human cell line KG-1. *DNA Res.* 2: 37-43.
- Hogue, D.L., Ellison, M.J., Young, J.D. and Cass, C.E. 1996. Identification of a novel membrane transporter associated with intracellular membranes by phenotypic complementation in the yeast *Saccharomyces cerevisiae*. *J. Biol. Chem.* 271: 9801-9808.
- Cabrita, M.A., Hobman, T.C., Hogue, D.L., King, K.M. and Cass, C.E. 1999. Mouse transporter protein, a membrane protein that regulates cellular multidrug resistance, is localized to lysosomes. *Cancer Res.* 59: 4890-4897.
- Hogue, D.L., Nash, C., Ling, V. and Hobman, T.C. 2002. Lysosome-associated protein transmembrane 4  $\alpha$  (LAPTM4 $\alpha$ ) requires two tandemly arranged tyrosine-based signals for sorting to lysosomes. *Biochem. J.* 365 (Pt 3): 721-730.
- Liu, X.R., Zhou, R.L., Zhang, Q.Y., Zhang, Y., Jin, Y.Y., Lin, M., Rui, J.A. and Ye, D.X. 2004. Structure analysis and expressions of a novel tetratransmembrane protein, lysosoma-associated protein transmembrane 4  $\beta$  associated with hepatocellular carcinoma. *World J. Gastroenterol.* 10: 1555-1559.
- Maeda, K., Horikoshi, T., Nakashima, E., Miyamoto, Y., Mabuchi, A. and Ikegawa, S. 2005. MATN and LAPTM are parts of larger transcription units produced by intergenic splicing: intergenic splicing may be a common phenomenon. *DNA Res.* 12: 365-372.

## CHROMOSOMAL LOCATION

Genetic locus: LAPTM4A (human) mapping to 2p24.1; Laptm4a (mouse) mapping to 12 A1.1.

## STORAGE

Store at 4° C, \*\*DO NOT FREEZE\*\*. Stable for one year from the date of shipment. Non-hazardous. No MSDS required.

## PROTOCOLS

See our web site at [www.scbt.com](http://www.scbt.com) or our catalog for detailed protocols and support products.

## SOURCE

LAPTM4A (E-21) is a purified rabbit polyclonal antibody raised against LAPTM4A of human origin.

## PRODUCT

Each vial contains 100  $\mu$ g IgG in 1.0 ml PBS with < 0.1% sodium azide, 0.1% gelatin and < 0.02% sucrose.

## APPLICATIONS

LAPTM4A (E-21) is recommended for detection of LAPTM4A of mouse, rat, human and dog origin by Western Blotting (starting dilution 1:200, dilution range 1:100-1:1000), immunoprecipitation [1-2  $\mu$ g per 100-500  $\mu$ g of total protein (1 ml of cell lysate)] and solid phase ELISA (starting dilution 1:30, dilution range 1:30-1:3000).

Suitable for use as control antibody for LAPTM4A siRNA (h): sc-94824, LAPTM4A siRNA (m): sc-146645, LAPTM4A shRNA Plasmid (h): sc-94824-SH, LAPTM4A shRNA Plasmid (m): sc-146645-SH, LAPTM4A shRNA (h) Lentiviral Particles: sc-94824-V and LAPTM4A shRNA (m) Lentiviral Particles: sc-146645-V.

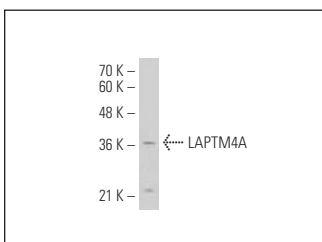
Molecular Weight of LAPTM4A: 27 kDa.

Positive Controls: Hep G2 cell lysate: sc-2227.

## RECOMMENDED SECONDARY REAGENTS

To ensure optimal results, the following support (secondary) reagents are recommended: 1) Western Blotting: use goat anti-rabbit IgG-HRP: sc-2004 (dilution range: 1:2000-1:100,000) or Cruz Marker™ compatible goat anti-rabbit IgG-HRP: sc-2030 (dilution range: 1:2000-1:5000), Cruz Marker™ Molecular Weight Standards: sc-2035, TBS Blotto A Blocking Reagent: sc-2333 and Western Blotting Luminol Reagent: sc-2048. 2) Immunoprecipitation: use Protein A/G PLUS-Agarose: sc-2003 (0.5 ml agarose/2.0 ml).

## DATA



LAPTM4A (E-21): sc-102005. Western blot analysis of LAPTM4A expression in Hep G2 whole cell lysate.

## RESEARCH USE

For research use only, not for use in diagnostic procedures.