

ATP6AP1L (P-19): sc-102013

BACKGROUND

With 181 million base pairs encoding around 1,000 genes, chromosome 5 is about 6% of human genomic DNA. It is associated with Cockayne syndrome through the ERCC8 gene and familial adenomatous polyposis through the adenomatous polyposis coli (APC) tumor suppressor gene. Treacher Collins syndrome is also chromosome 5 associated and is caused by insertions or deletions within the TCOF1 gene. Deletion of the p arm of chromosome 5 leads to Cri du chat syndrome. Deletion of 5q or chromosome 5 altogether is common in therapy-related acute myelogenous leukemias and myelodysplastic syndrome. The ATP6AP1L gene product has been provisionally designated ATP6AP1L pending further characterization.

REFERENCES

- Dixon, M.J., et al. 1991. The gene for Treacher Collins syndrome maps to the long arm of chromosome 5. *Am. J. Hum. Genet.* 49: 17-22.
- Saltman, D.L., et al. 1993. A physical map of 15 loci on human chromosome 5q23-q33 by two-color fluorescence *in situ* hybridization. *Genomics* 16: 726-732.
- Kadmon, M., et al. 2001. Duodenal adenomatosis in familial adenomatous polyposis coli. A review of the literature and results from the Heidelberg Polyposis Register. *Int. J. Colorectal Dis.* 16: 63-75.
- South, S.T., et al. 2006. A new genomic mechanism leading to cri-du-chat syndrome. *Am. J. Med. Genet. A* 140: 2714-2720.
- Aretz, S., et al. 2007. Somatic APC mosaicism: a frequent cause of familial adenomatous polyposis (FAP). *Hum. Mutat.* 28: 985-992.
- Cleaver, J.E., et al. 2007. Cockayne syndrome exhibits dysregulation of p21 and other gene products that may be independent of transcription-coupled repair. *Neuroscience* 145: 1300-1308.
- Du, H.Y., et al. 2007. Telomerase reverse transcriptase haploinsufficiency and telomere length in individuals with 5p- syndrome. *Aging Cell* 6: 689-697.
- Herry, A., et al. 2007. Redefining monosomy 5 by molecular cytogenetics in 23 patients with MDS/AML. *Eur. J. Haematol.* 78: 457-467.
- Makrantonaki, E. and Zouboulis, C.C. 2007. Molecular mechanisms of skin aging: state of the art. *Ann. N.Y. Acad. Sci.* 1119: 40-50.

CHROMOSOMAL LOCATION

Genetic locus: ATP6AP1L (human) mapping to 5q14.2.

SOURCE

ATP6AP1L (P-19) is a purified rabbit polyclonal antibody raised against ATP6AP1L of human origin.

PRODUCT

Each vial contains 50 µg IgG in 500 µl PBS with < 0.1% sodium azide, 0.1% gelatin and < 0.02% sucrose.

APPLICATIONS

ATP6AP1L (P-19) is recommended for detection of ATP6AP1L of human origin by Western Blotting (starting dilution 1:200, dilution range 1:100-1:1000), immunoprecipitation [1-2 µg per 100-500 µg of total protein (1 ml of cell lysate)] and solid phase ELISA (starting dilution 1:30, dilution range 1:30-1:3000).

Suitable for use as control antibody for ATP6AP1L siRNA (h): sc-91778, ATP6AP1L shRNA Plasmid (h): sc-91778-SH and ATP6AP1L shRNA (h) Lentiviral Particles: sc-91778-V.

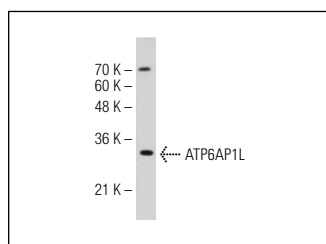
Molecular Weight of ATP6AP1L: 25 kDa.

Positive Controls: Hep G2 cell lysate: sc-2227.

RECOMMENDED SECONDARY REAGENTS

To ensure optimal results, the following support (secondary) reagents are recommended: 1) Western blotting: use goat anti-rabbit IgG-HRP: sc-2004 (dilution range: 1:2000-1:100,000) or Cruz Marker™ compatible goat anti-rabbit IgG-HRP: sc-2030 (dilution range: 1:2000-1:5000), Cruz Marker™ Molecular Weight Standards: sc-2035, TBS Blotto A Blocking Reagent: sc-2333 and Western Blotting Luminol Reagent: sc-2048. 2) Immunoprecipitation: use Protein A/G PLUS-Agarose: sc-2003 (0.5 ml agarose/2.0 ml).

DATA



ATP6AP1L (P-19): sc-102013. Western blot analysis of ATP6AP1L expression in Hep G2 whole cell lysate.

STORAGE

Store at 4° C, **DO NOT FREEZE**. Stable for one year from the date of shipment. Non-hazardous. No MSDS required.

RESEARCH USE

For research use only, not for use in diagnostic procedures.

PROTOCOLS

See our web site at www.scbt.com or our catalog for detailed protocols and support products.