



LRP2BP (B-24): sc-102014

BACKGROUND

LRP2BP (LRP2-binding protein), also known as MegBP (megalin-binding protein), is a 347 amino acid protein that contains one TPR repeat and six Sel1-like repeats. Localized to the plasma membrane and throughout the cytoplasm, LRP2BP interacts with megalin (also known as LRP2) and, via this interaction, is thought to regulate megalin function. Specifically, LRP2BP acts as a scaffold protein that, through its TPR motifs, assists in the sequestration and/or the release of transcription factors that influence megalin's effects on endocytosis and hormone release. LRP2BP is expressed in colon, testis, small intestine and blood leukocytes, as well as in pancreatic adenocarcinoma cells, suggesting a possible role for LRP2BP in carcinogenesis. Two isoforms of LRP2BP exist due to alternative splicing events.

REFERENCES

1. Korenberg, J.R., et al. 1994. Chromosomal localization of human genes for the LDL receptor family member glycoprotein 330 (LRP2) and its associated protein RAP (LRPAP1). *Genomics* 22: 88-93.
2. Nagase, T., et al. 2000. Prediction of the coding sequences of unidentified human genes. XVI. The complete sequences of 150 new cDNA clones from brain which code for large proteins *in vitro*. *DNA Res.* 7: 65-73.
3. Petersen, H.H., et al. 2003. Functional interaction of megalin with the megalin binding protein (MegBP), a novel tetratricopeptide repeat-containing adaptor molecule. *J. Cell Sci.* 116: 453-461.
4. Li, J., et al. 2005. Molecular cloning and characterization of a novel human gene containing four ankyrin repeat domains. *Cell. Mol. Biol. Lett.* 10: 185-193.
5. Urban, M.O., et al. 2005. Comparison of the antinociceptive profiles of gabapentin and 3-methylgabapentin in rat models of acute and persistent pain: implications for mechanism of action. *J. Pharmacol. Exp. Ther.* 313: 1209-1216.
6. Fisher, C.E. and Howie, S.E. 2006. The role of megalin (LRP2/Gp330) during development. *Dev. Biol.* 296: 279-297.
7. Mii, A., et al. 2007. Genetic association of low-density lipoprotein receptor-related protein 2 (LRP2) with plasma lipid levels. *J. Atheroscler. Thromb.* 14: 310-316.
8. Osborne, R.J., et al. 2007. Expression profile of FSHD supports a link between retinal vasculopathy and muscular dystrophy. *Neurology* 68: 569-577.

CHROMOSOMAL LOCATION

Genetic locus: LRP2BP (human) mapping to 4q35.1; Lrp2bp (mouse) mapping to 8 B1.1.

STORAGE

Store at 4° C, ****DO NOT FREEZE****. Stable for one year from the date of shipment. Non-hazardous. No MSDS required.

RESEARCH USE

For research use only, not for use in diagnostic procedures.

SOURCE

LRP2BP (B-24) is a purified rabbit polyclonal antibody raised against LRP2BP of human origin.

PRODUCT

Each vial contains 50 µg IgG in 500 µl PBS with < 0.1% sodium azide, 0.1% gelatin and < 0.02% sucrose.

APPLICATIONS

LRP2BP (B-24) is recommended for detection of LRP2BP of mouse, rat, human and dog origin by Western Blotting (starting dilution 1:200, dilution range 1:100-1:1000), immunoprecipitation [1-2 µg per 100-500 µg of total protein (1 ml of cell lysate)] and solid phase ELISA (starting dilution 1:30, dilution range 1:30-1:3000).

Suitable for use as control antibody for LRP2BP siRNA (h): sc-89287, LRP2BP siRNA (m): sc-149047, LRP2BP shRNA Plasmid (h): sc-89287-SH, LRP2BP shRNA Plasmid (m): sc-149047-SH, LRP2BP shRNA (h) Lentiviral Particles: sc-89287-V and LRP2BP shRNA (m) Lentiviral Particles: sc-149047-V.

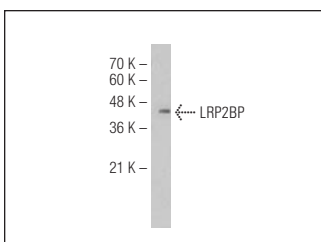
Molecular Weight of LRP2BP: 40 kDa.

Positive Controls: Jurkat whole cell lysate: sc-2204.

RECOMMENDED SECONDARY REAGENTS

To ensure optimal results, the following support (secondary) reagents are recommended: 1) Western Blotting: use goat anti-rabbit IgG-HRP: sc-2004 (dilution range: 1:2000-1:100,000) or Cruz Marker™ compatible goat anti-rabbit IgG-HRP: sc-2030 (dilution range: 1:2000-1:5000), Cruz Marker™ Molecular Weight Standards: sc-2035, TBS Blotto A Blocking Reagent: sc-2333 and Western Blotting Luminol Reagent: sc-2048. 2) Immunoprecipitation: use Protein A/G PLUS-Agarose: sc-2003 (0.5 ml agarose/2.0 ml).

DATA



LRP2BP (B-24): sc-102014. Western blot analysis of LRP2BP expression in Jurkat whole cell lysate.

PROTOCOLS

See our web site at www.scbt.com or our catalog for detailed protocols and support products.