

MAGE-A8 (V-25): sc-102016

BACKGROUND

The melanoma-associated antigen (MAGE) family consists of a number of antigens recognized by cytotoxic T lymphocytes. The MAGE genes were initially isolated from different kinds of tumors, and based on their virtually exclusive tumor-specific expression in adult tissues, they have been used as targets for cancer immunotherapy. MAGE genes encode for tumor-rejection antigens and are expressed in tumors of different histologic types, but not in normal tissues, with the exception of testis and placenta. Although a large number of MAGE genes have now been identified and extensively studied in tumors of various origin, their function in normal cells remains unknown. MAGE-A8 appears to be overexpressed in a majority of human bladder carcinomas.

REFERENCES

- Okami, J., et al. 2000. Genetic detection for micrometastasis in lymph node of biliary tract carcinoma. *Clin. Cancer Res.* 6: 2326-2332.
- Granelli, P., et al. 2000. Melanoma antigen genes 1 and 2 are differentially expressed in human gastric and cardiac carcinomas. *Scand. J. Gastroenterol.* 35: 528-533.
- Klein, C., et al. 2000. Comparative analysis of genetically modified dendritic cells and tumor cells as therapeutic cancer vaccines. *J. Exp. Med.* 191: 1699-1708.
- Busam, K.J., et al. 2000. Immunoreactivity with the anti-MAGE antibody 57B in malignant melanoma: frequency of expression and correlation with prognostic parameters. *Mod. Pathol.* 13: 459-465.
- Kobayashi, Y., et al. 2000. Expression of MAGE, GAGE and BAGE genes in human liver diseases: utility as molecular markers for hepatocellular carcinoma. *J. Hepatol.* 32: 612-617.
- Luiten, R., et al. 2000. A MAGE-A1 peptide is recognized on HLA-B7 human tumors by cytolytic T lymphocytes. *Tissue Antigens* 55: 149-152.
- Osterlund, C., et al. 2000. MAGE-B4, a novel melanoma antigen (MAGE) gene specifically expressed during germ cell differentiation. *Cancer Res.* 60: 1054-1061.
- Bar-Haim, E., et al. 2004. MAGE-A8 overexpression in transitional cell carcinoma of the bladder: identification of two tumour-associated antigen peptides. *Br. J. Cancer.* 91: 398-407.

CHROMOSOMAL LOCATION

Genetic locus: MAGEA8 (human) mapping to Xq28; Magea8 (mouse) mapping to X F3.

STORAGE

Store at 4° C, **DO NOT FREEZE**. Stable for one year from the date of shipment. Non-hazardous. No MSDS required.

PROTOCOLS

See our web site at www.scbt.com or our catalog for detailed protocols and support products.

SOURCE

MAGE-A8 (V-25) is a purified rabbit polyclonal antibody raised against MAGE-A8 of human origin.

PRODUCT

Each vial contains 50 µg IgG in 500 µl PBS with < 0.1% sodium azide, 0.1% gelatin and < 0.02% sucrose.

APPLICATIONS

MAGE-A8 (V-25) is recommended for detection of MAGE-A8 of human origin by Western Blotting (starting dilution 1:200, dilution range 1:100-1:1000), immunoprecipitation [1-2 µg per 100-500 µg of total protein (1 ml of cell lysate)], immunofluorescence (starting dilution 1:50, dilution range 1:50-1:500), immunohistochemistry (including paraffin-embedded sections) (starting dilution 1:50, dilution range 1:50-1:500) and solid phase ELISA (starting dilution 1:30, dilution range 1:30-1:3000).

Suitable for use as control antibody for MAGE-A8 siRNA (h): sc-108014, MAGE-A8 shRNA Plasmid (h): sc-108014-SH and MAGE-A8 shRNA (h) Lentiviral Particles: sc-108014-V.

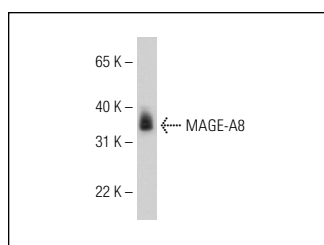
Molecular Weight of MAGE-A8: 25 kDa.

Positive Controls: human bladder carcinoma.

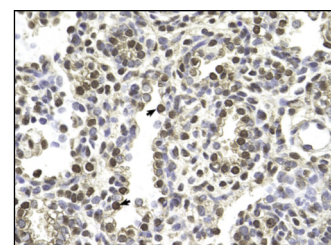
RECOMMENDED SECONDARY REAGENTS

To ensure optimal results, the following support (secondary) reagents are recommended: 1) Western Blotting: use goat anti-rabbit IgG-HRP: sc-2004 (dilution range: 1:2000-1:100,000) or Cruz Marker™ compatible goat anti-rabbit IgG-HRP: sc-2030 (dilution range: 1:2000-1:5000), Cruz Marker™ Molecular Weight Standards: sc-2035, TBS Blotto A Blocking Reagent: sc-2333 and Western Blotting Luminol Reagent: sc-2048. 2) Immunoprecipitation: use Protein A/G PLUS-Agarose: sc-2003 (0.5 ml agarose/2.0 ml). 3) Immunofluorescence: use goat anti-rabbit IgG-FITC: sc-2012 (dilution range: 1:100-1:400) or goat anti-rabbit IgG-TR: sc-2780 (dilution range: 1:100-1:400) with UltraCruz™ Mounting Medium: sc-24941. 4) Immunohistochemistry: use ImmunoCruz™: sc-2051 or ABC: sc-2018 rabbit IgG Staining Systems.

DATA



MAGE-A8 (V-25): sc-102016. Western blot analysis of MAGE-A8 expression in placenta tissue extract.



MAGE-A8 (V-25): sc-102016. Immunoperoxidase staining of formalin fixed, paraffin-embedded human lung tissue showing nuclear and cytoplasmic staining.

RESEARCH USE

For research use only, not for use in diagnostic procedures.