

MANSC1 (Y-24): sc-102017

BACKGROUND

MANSC1 (MANSC domain-containing protein 1), also known as LOH12CR3 (Loss of heterozygosity 12 chromosomal region 3 protein), is a 414 amino acid single-pass membrane protein. Expressed throughout the body, MANSC1 contains one MANSC domain and is encoded by a gene that is located on chromosome 12. Encoding over 1,100 genes within 132 million bases, chromosome 12 makes up about 4.5% of the human genome. A number of skeletal deformities are linked to chromosome 12, including hypochondrogenesis, achondrogenesis and Kniest dysplasia. Chromosome 12 is also home to a homeobox gene cluster which encodes crucial transcription factors for morphogenesis, and the natural killer complex gene cluster encoding C-type lectin proteins which mediate the NK cell response to MHC I interaction.

REFERENCES

- Allen, T.L., et al. 1996. Cytogenetic and molecular analysis in trisomy 12p. *Am. J. Med. Genet.* 63: 250-256.
- Yang, W. and Cole, W.G. 1998. Low basal transcripts of the COL2A1 collagen gene from lymphoblasts show alternative splicing of exon 12 in the Kniest form of spondyloepiphyseal dysplasia. *Hum. Mutat. Suppl.* 1: S1-S2.
- Trowsdale, J., et al. 2001. The genomic context of natural killer receptor extended gene families. *Immunol. Rev.* 181: 20-38.
- Zumkeller, W., et al. 2004. Genotype/phenotype analysis in a patient with pure and complete trisomy 12p. *Am. J. Med. Genet. A* 129A: 261-264.
- Montpetit, A., et al. 2004. Mutational and expression analysis of the chromosome 12p candidate tumor suppressor genes in pre-B acute lymphoblastic leukemia. *Leukemia* 18: 1499-1504.
- Kelley, J., et al. 2005. Comparative genomics of natural killer cell receptor gene clusters. *PLoS Genet.* 1: e27.
- Nishimura, G., et al. 2005. The phenotypic spectrum of COL2A1 mutations. *Hum. Mutat.* 26: 36-43.

CHROMOSOMAL LOCATION

Genetic locus: MANSC1 (human) mapping to 12p13.2; Mansk1 (mouse) mapping to 6 G1.

SOURCE

MANSC1 (Y-24) is a purified rabbit polyclonal antibody raised against MANSC1 of human origin.

PRODUCT

Each vial contains 50 µg IgG in 500 µl PBS with < 0.1% sodium azide, 0.1% gelatin and < 0.02% sucrose.

STORAGE

Store at 4° C, ****DO NOT FREEZE****. Stable for one year from the date of shipment. Non-hazardous. No MSDS required.

RESEARCH USE

For research use only, not for use in diagnostic procedures.

APPLICATIONS

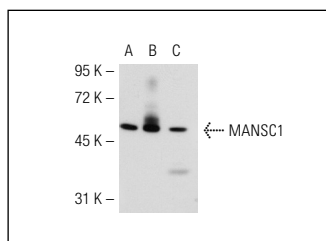
MANSC1 (Y-24) is recommended for detection of MANSC1 of mouse and human origin by Western Blotting (starting dilution 1:200, dilution range 1:100-1:1000), immunoprecipitation [1-2 µg per 100-500 µg of total protein (1 ml of cell lysate)], immunofluorescence (starting dilution 1:50, dilution range 1:50-1:500), immunohistochemistry (including paraffin-embedded sections) (starting dilution 1:50, dilution range 1:50-1:500) and solid phase ELISA (starting dilution 1:30, dilution range 1:30-1:3000).

Suitable for use as control antibody for MANSC1 siRNA (h): sc-95962, MANSC1 siRNA (m): sc-149250, MANSC1 shRNA Plasmid (h): sc-95962-SH, MANSC1 shRNA Plasmid (m): sc-149250-SH, MANSC1 shRNA (h) Lentiviral Particles: sc-95962-V and MANSC1 shRNA (m) Lentiviral Particles: sc-149250-V.

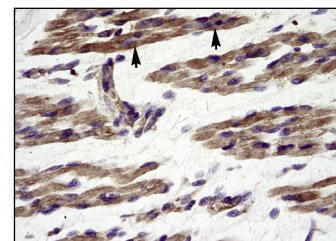
Molecular Weight of MANSC1: 47 kDa.

Positive Controls: MANSC1 (m): 293T Lysate: 121502 or Caki-1 cell lysate: sc-2224.

DATA



MANSC1 (Y-24): sc-102017. Western blot analysis of MANSC1 expression in non-transfected 293T: sc-117752 (A), mouse MANSC1 transfected 293T: sc-121502 (B) and Caki-1 (C) whole cell lysates.



MANSC1 (Y-24): sc-102017. Immunoperoxidase staining of formalin fixed, paraffin-embedded human muscle tissue showing cytoplasmic staining.

PROTOCOLS

See our web site at www.scbt.com or our catalog for detailed protocols and support products.



MONOS
Satisfaction
Guaranteed

Try **MANSC1 (D-4): sc-514113**, our highly recommended monoclonal alternative to MANSC1 (Y-24).