

RPUSD2 (R-22): sc-102098

BACKGROUND

RPUSD2 (RNA pseudouridylate synthase domain-containing protein 2), also known as C15orf19 or C18B11, is a 545 amino acid member of the pseudouridine synthase rluA family and is encoded by a gene that is located on chromosome 15. Encoding more than 700 genes, chromosome 15 is made up of approximately 106 million base pairs and is about 3% of the human genome. Angelman and Prader-Willi syndromes are associated with loss of function or deletion of genes in the 15q11-q13 region. In the case of Angelman syndrome, this loss is due to inactivity of the maternal 15q11-q13 encoded UBE3A gene in the brain by either chromosomal deletion or mutation. In cases of Prader-Willi syndrome, there is a partial or complete deletion of this region from the paternal copy of chromosome 15. Tay-Sachs disease is a lethal disorder associated with mutations of the HEXA gene, which is encoded by chromosome 15. Marfan syndrome is associated with chromosome 15 through the FBN1 gene.

REFERENCES

- Cachón-González, M.B., et al. 2006. Effective gene therapy in an authentic model of Tay-Sachs-related diseases. *Proc. Natl. Acad. Sci. USA* 103: 10373-10378.
- Zody, M.C., et al. 2006. Analysis of the DNA sequence and duplication history of human chromosome 15. *Nature* 440: 671-675.
- Diene, G., et al. 2007. The Prader-Willi syndrome. *Ann. Endocrinol.* 68: 129-137.
- Lalande, M. and Calciano, M.A. 2007. Molecular epigenetics of Angelman syndrome. *Cell. Mol. Life Sci.* 64: 947-960.
- Maegawa, G.H., et al. 2007. Pyrimethamine as a potential pharmacological chaperone for late-onset forms of GM2 gangliosidosis. *J. Biol. Chem.* 282: 9150-9161.
- Makoff, A.J. and Flomen, R.H. 2007. Detailed analysis of 15q11-q14 sequence corrects errors and gaps in the public access sequence to fully reveal large segmental duplications at breakpoints for Prader-Willi, Angelman, and inv dup(15) syndromes. *Genome Biol.* 8: R114
- Ramirez, F. and Dietz, H.C. 2007. Fibrillin-rich microfibrils: Structural determinants of morphogenetic and homeostatic events. *J. Cell. Physiol.* 213: 326-330.
- ten Dijke, P. and Arthur, H.M. 2007. Extracellular control of TGF β signalling in vascular development and disease. *Nat. Rev. Mol. Cell Biol.* 8: 857-869.

CHROMOSOMAL LOCATION

Genetic locus: RPUSD2 (human) mapping to 15q15.1.

SOURCE

RPUSD2 (R-22) is a purified rabbit polyclonal antibody raised against RPUSD2 of human origin.

STORAGE

Store at 4° C, ****DO NOT FREEZE****. Stable for one year from the date of shipment. Non-hazardous. No MSDS required.

PRODUCT

Each vial contains 100 μ g IgG in 1.0 ml PBS with < 0.1% sodium azide, 0.1% gelatin and < 0.02% sucrose.

APPLICATIONS

RPUSD2 (R-22) is recommended for detection of RPUSD2 of mouse, rat and human origin by Western Blotting (starting dilution 1:200, dilution range 1:100-1:1000), immunoprecipitation [1-2 μ g per 100-500 μ g of total protein (1 ml of cell lysate)], immunofluorescence (starting dilution 1:50, dilution range 1:50-1:500), immunohistochemistry (including paraffin-embedded sections) (starting dilution 1:50, dilution range 1:50-1:500) and solid phase ELISA (starting dilution 1:30, dilution range 1:30-1:3000).

Suitable for use as control antibody for RPUSD2 siRNA (h): sc-90059, RPUSD2 siRNA (m): sc-153122, RPUSD2 shRNA Plasmid (h): sc-90059-SH, RPUSD2 shRNA Plasmid (m): sc-153122-SH, RPUSD2 shRNA (h) Lentiviral Particles: sc-90059-V and RPUSD2 shRNA (m) Lentiviral Particles: sc-153122-V.

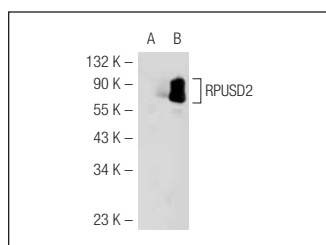
Molecular Weight of RPUSD2: 61 kDa.

Positive Controls: Hep G2 cell lysate: sc-2227.

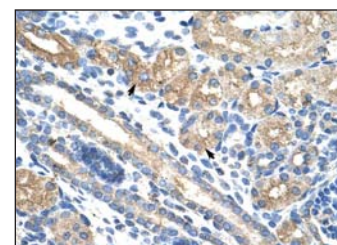
RECOMMENDED SECONDARY REAGENTS

To ensure optimal results, the following support (secondary) reagents are recommended: 1) Western Blotting: use goat anti-rabbit IgG-HRP: sc-2004 (dilution range: 1:2000-1:100,000) or Cruz Marker™ compatible goat anti-rabbit IgG-HRP: sc-2030 (dilution range: 1:2000-1:5000), Cruz Marker™ Molecular Weight Standards: sc-2035, TBS Blotto A Blocking Reagent: sc-2333 and Western Blotting Luminol Reagent: sc-2048. 2) Immunoprecipitation: use Protein A/G PLUS-Agarose: sc-2003 (0.5 ml agarose/2.0 ml). 3) Immunofluorescence: use goat anti-rabbit IgG-FITC: sc-2012 (dilution range: 1:100-1:400) or goat anti-rabbit IgG-TR: sc-2780 (dilution range: 1:100-1:400) with UltraCruz™ Mounting Medium: sc-24941. 4) Immunohistochemistry: use ImmunoCruz™: sc-2051 or ABC: sc-2018 rabbit IgG Staining Systems.

DATA



RPUSD2 (R-22): sc-102098. Western blot analysis of RPUSD2 expression in non-transfected: sc-117752 (A) and human RPUSD2 transfected: sc-113720 (B) 293T whole cell lysates.



RPUSD2 (R-22): sc-102098. Immunoperoxidase staining of formalin fixed, paraffin-embedded human kidney tissue showing cytoplasmic staining.

RESEARCH USE

For research use only, not for use in diagnostic procedures.