

# SLC43A3 (S-23): sc-102117

## BACKGROUND

SLC43A3 (solute carrier family 43, member 3), also known as EEG1 (embryonic epithelia gene 1), FOAP-13, PRO1659 or SEEEG-1, is a 491 amino acid multi-pass membrane protein that belongs to the SLC43A transporter family. Highly expressed in macrophages, SLC43A3 is thought to function as a transporter of metabolites and nutrients that are necessary during developmental events, such as organogenesis. Specifically, SLC43A3 is involved in epithelial development, including the formation of cell sheets and hollow tubes that are used for membrane interface and molecular transport. Multiple isoforms of SLC43A3 exist due to alternative splicing events.

## REFERENCES

- Li, M.S., et al. 1995. Human eosinophil major basic protein, a mediator of allergic inflammation, is expressed by alternative splicing from two promoters. *Biochem. J.* 305: 921-927.
- Stuart, R.O., et al. 2001. EEG1, a putative transporter expressed during epithelial organogenesis: comparison with embryonic transporter expression during nephrogenesis. *Am. J. Physiol. Renal Physiol.* 281: F1148-F1156.
- Otsuki, T., et al. 2005. Signal sequence and keyword trap in silico for selection of full-length human cDNAs encoding secretion or membrane proteins from oligo-capped cDNA libraries. *DNA Res.* 12: 117-126.
- Piva, R., et al. 2006. Functional validation of the anaplastic lymphoma kinase signature identifies CEBPB and BCL2A1 as critical target genes. *J. Clin. Invest.* 116: 3171-3182.
- Lo, K.C., et al. 2007. Genome wide copy number abnormalities in pediatric medulloblastomas as assessed by array comparative genome hybridization. *Brain Pathol.* 17: 282-296.
- Wallgard, E., et al. 2008. Identification of a core set of 58 gene transcripts with broad and specific expression in the microvasculature. *Arterioscler. Thromb. Vasc. Biol.* 28: 1469-1476.

## CHROMOSOMAL LOCATION

Genetic locus: SLC43A3 (human) mapping to 11q12.1.

## SOURCE

SLC43A3 (S-23) is a purified rabbit polyclonal antibody raised against SLC43A3 of human origin.

## PRODUCT

Each vial contains 100 µg IgG in 1.0 ml PBS with < 0.1% sodium azide, 0.1% gelatin and < 0.02% sucrose.

## STORAGE

Store at 4° C, **\*\*DO NOT FREEZE\*\***. Stable for one year from the date of shipment. Non-hazardous. No MSDS required.

## PROTOCOLS

See our web site at [www.scbt.com](http://www.scbt.com) or our catalog for detailed protocols and support products.

## APPLICATIONS

SLC43A3 (S-23) is recommended for detection of SLC43A3 of human origin by Western Blotting (starting dilution 1:200, dilution range 1:100-1:1000), immunoprecipitation [1-2 µg per 100-500 µg of total protein (1 ml of cell lysate)], immunofluorescence (starting dilution 1:50, dilution range 1:50-1:500), immunohistochemistry (including paraffin-embedded sections) (starting dilution 1:50, dilution range 1:50-1:500) and solid phase ELISA (starting dilution 1:30, dilution range 1:30-1:3000).

Suitable for use as control antibody for SLC43A3 siRNA (h): sc-96371, SLC43A3 shRNA Plasmid (h): sc-96371-SH and SLC43A3 shRNA (h) Lentiviral Particles: sc-96371-V.

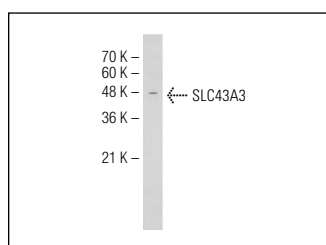
Molecular Weight of SLC43A3: 55 kDa.

Positive Controls: Jurkat whole cell lysate: sc-2204.

## RECOMMENDED SECONDARY REAGENTS

To ensure optimal results, the following support (secondary) reagents are recommended: 1) Western Blotting: use goat anti-rabbit IgG-HRP: sc-2004 (dilution range: 1:2000-1:100,000) or Cruz Marker™ compatible goat anti-rabbit IgG-HRP: sc-2030 (dilution range: 1:2000-1:5000), Cruz Marker™ Molecular Weight Standards: sc-2035, TBS Blotto A Blocking Reagent: sc-2333 and Western Blotting Luminol Reagent: sc-2048. 2) Immunoprecipitation: use Protein A/G PLUS-Agarose: sc-2003 (0.5 ml agarose/2.0 ml). 3) Immunofluorescence: use goat anti-rabbit IgG-FITC: sc-2012 (dilution range: 1:100-1:400) or goat anti-rabbit IgG-TR: sc-2780 (dilution range: 1:100-1:400) with UltraCruz™ Mounting Medium: sc-24941. 4) Immunohistochemistry: use ImmunoCruz™: sc-2051 or ABC: sc-2018 rabbit IgG Staining Systems.

## DATA



SLC43A3 (S-23): sc-102117. Western blot analysis of SLC43A3 expression in Jurkat whole cell lysate.

## RESEARCH USE

For research use only, not for use in diagnostic procedures.