

TMEM91 (T-22): sc-102136

BACKGROUND

Transmembrane protein 91 (TMEM91) is a 172 amino acid member of the capucin family. A multi-pass transmembrane protein, TMEM91 contains two putative transmembrane regions. The gene encoding TMEM91 maps to chromosome 19q13.2. Chromosome 19 includes a diversity of interesting genes and is recognized for having the greatest gene density of the human chromosomes. It is the genetic home for a number of immunoglobulin superfamily members including the killer cell and leukocyte Ig-like receptors, a number of ICAMs, the CEACAM and PSG family, and Fc receptors. Key genes for eye color and hair color also map to chromosome 19.

REFERENCES

- Zimmermann, W., Weber, B., Ortlieb, B., Rudert, F., Schempp, W., Fiebig, H.H., Shively, J.E., von Kleist, S. and Thompson, J.A. 1988. Chromosomal localization of the carcinoembryonic antigen gene family and differential expression in various tumors. *Cancer Res.* 48: 2550-2554.
- Trettel, F., Mantuano, E., Calabresi, V., Veneziano, L., Olsen, A.S., Georgescu, A., Gordon, L., Sabbadini, G., Frontali, M. and Jodice, C. 2000. A fine physical map of the CACNA1A gene region on 19p13.1-p13.2 chromosome. *Gene* 241: 45-50.
- Moodie, S.J., Norman, P.J., King, A.L., Fraser, J.S., Curtis, D., Ellis, H.J., Vaughan, R.W. and Ciclitira, P.J. 2002. Analysis of candidate genes on chromosome 19 in coeliac disease: an association study of the KIR and LILR gene clusters. *Eur. J. Immunogenet.* 29: 287-291.
- Leem, S.H., Kouprina, N., Grimwood, J., Kim, J.H., Mullokandov, M., Yoon, Y.H., Chae, J.Y., Morgan, J., Lucas, S., Richardson, P., Detter, C., Glavina, T., Rubin, E., Barrett, J.C. and Larionov, V. 2004. Closing the gaps on human chromosome 19 revealed genes with a high density of repetitive tandemly arrayed elements. *Genome Res.* 14: 239-246.
- Vikelis, M., Papatriantafyllou, J. and Karageorgiou, C.E. 2007. A novel CADASIL-causing mutation in a stroke patient. *Swiss Med Wkly.* 137: 323-325.

CHROMOSOMAL LOCATION

Genetic locus: TMEM91 (human) mapping to 19q13.2.

SOURCE

TMEM91 (T-22) is a purified rabbit polyclonal antibody raised against TMEM91 of human origin.

PRODUCT

Each vial contains 100 µg IgG in 1.0 ml PBS with < 0.1% sodium azide, 0.1% gelatin and < 0.02% sucrose.

STORAGE

Store at 4° C, **DO NOT FREEZE**. Stable for one year from the date of shipment. Non-hazardous. No MSDS required.

RESEARCH USE

For research use only, not for use in diagnostic procedures.

APPLICATIONS

TMEM91 (T-22) is recommended for detection of TMEM91 of human origin by Western Blotting (starting dilution 1:200, dilution range 1:100-1:1000), immunoprecipitation [1-2 µg per 100-500 µg of total protein (1 ml of cell lysate)] and solid phase ELISA (starting dilution 1:30, dilution range 1:30-1:3000).

Suitable for use as control antibody for TMEM91 siRNA (h): sc-106933, TMEM91 shRNA Plasmid (h): sc-106933-SH and TMEM91 shRNA (h) Lentiviral Particles: sc-106933-V.

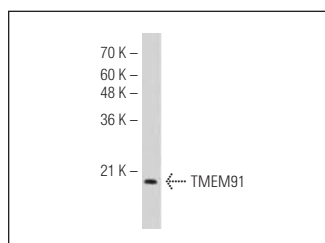
Molecular Weight of TMEM91: 18 kDa.

Positive Controls: Hep G2 cell lysate: sc-2227.

RECOMMENDED SECONDARY REAGENTS

To ensure optimal results, the following support (secondary) reagents are recommended: 1) Western Blotting: use goat anti-rabbit IgG-HRP: sc-2004 (dilution range: 1:2000-1:100,000) or Cruz Marker™ compatible goat anti-rabbit IgG-HRP: sc-2030 (dilution range: 1:2000-1:5000), Cruz Marker™ Molecular Weight Standards: sc-2035, TBS Blotto A Blocking Reagent: sc-2333 and Western Blotting Luminol Reagent: sc-2048. 2) Immunoprecipitation: use Protein A/G PLUS-Agarose: sc-2003 (0.5 ml agarose/2.0 ml).

DATA



TMEM91 (T-22): sc-102136. Western blot analysis of TMEM91 expression in Hep G2 whole cell lysate.

PROTOCOLS

See our web site at www.scbt.com or our catalog for detailed protocols and support products.