

UGTREL1 (D-23): sc-102148

BACKGROUND

UGTREL1 (UDP-galactose transporter related protein 1), also known as SLC35B1 (solute carrier family 35 member B1), is a 325 amino acid multi-pass membrane protein that belongs to the SLC35B subfamily of the nucleotide-sugar transporter (NST) family. Members of the NST family are transmembrane proteins that mediate the translocation of nucleotide-sugars from the cytosol to the interior lumen of the endoplasmic reticulum (ER) and the Golgi apparatus via an antiport mechanism, exchanging nucleoside monophosphates for nucleotide-sugars. This activity of NST is important for providing an available source of nucleotide-sugars for glycoconjugate synthesis. Localizing to the endoplasmic reticulum membrane, UGTREL1 functions as a sugar transporter and shows significant similarity to the yeast UDP-N-acetylglucosamine transporter.

REFERENCES

- Ishida, N., et al. 1996. Molecular cloning and characterization of a novel isoform of the human UDP-galactose transporter, and of related complementary DNAs belonging to the nucleotide-sugar transporter gene family. *J. Biochem.* 120: 1074-1078.
- Ishida, N., et al. 1998. Functional expression of human Golgi CMP-sialic acid transporter in the Golgi complex of a transporter-deficient Chinese hamster ovary cell mutant. *J. Biochem.* 124: 171-178.
- Aoki, K., et al. 2001. Substrate recognition by UDP-galactose and CMP-sialic acid transporters. Different sets of transmembrane helices are utilized for the specific recognition of UDP-galactose and CMP-sialic acid. *J. Biol. Chem.* 276: 21555-21561.
- Online Mendelian Inheritance in Man, OMIM[™]. 2002. Johns Hopkins University, Baltimore, MD. MIM Number: 610790. World Wide Web URL: <http://www.ncbi.nlm.nih.gov/omim/>
- Aoki, K., et al. 2003. Substrate recognition by nucleotide sugar transporters: further characterization of substrate recognition regions by analyses of UDP-galactose/CMP-sialic acid transporter chimeras and biochemical analysis of the substrate specificity of parental and chimeric transporters. *J. Biol. Chem.* 278: 22887-22893.
- Ishida, N. and Kawakita, M. 2004. Molecular physiology and pathology of the nucleotide sugar transporter family (SLC35). *Pflugers Arch.* 447: 768-775.
- Kobayashi, T., et al. 2006. Molecular and functional characterization of microsomal UDP-glucuronic acid uptake by members of the nucleotide sugar transporter (NST) family. *Biochem. J.* 400: 281-289.
- Muraoka, M., et al. 2007. Variety of nucleotide-sugar transporters with respect to the interaction with nucleoside mono- and diphosphates. *J. Biol. Chem.* 282: 24615-24622.

CHROMOSOMAL LOCATION

Genetic locus: SLC35B1 (human) mapping to 17q21.33; Slc35b1 (mouse) mapping to 11 D.

RESEARCH USE

For research use only, not for use in diagnostic procedures.

SOURCE

UGTREL1 (D-23) is a purified rabbit polyclonal antibody raised against UGTREL1 of human origin.

PRODUCT

Each vial contains 100 µg IgG in 1.0 ml PBS with < 0.1% sodium azide, 0.1% gelatin and < 0.02% sucrose.

APPLICATIONS

UGTREL1 (D-23) is recommended for detection of UGTREL1 of mouse, rat, human and canine origin by Western Blotting (starting dilution 1:200, dilution range 1:100-1:1000), immunoprecipitation [1-2 µg per 100-500 µg of total protein (1 ml of cell lysate)] and solid phase ELISA (starting dilution 1:30, dilution range 1:30-1:3000).

Suitable for use as control antibody for UGTREL1 siRNA (h): sc-94212, UGTREL1 siRNA (m): sc-154909, UGTREL1 shRNA Plasmid (h): sc-94212-SH, UGTREL1 shRNA Plasmid (m): sc-154909-SH, UGTREL1 shRNA (h) Lentiviral Particles: sc-94212-V and UGTREL1 shRNA (m) Lentiviral Particles: sc-154909-V.

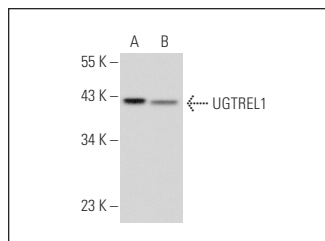
Molecular Weight of UGTREL1: 36 kDa.

Positive Controls: Jurkat whole cell lysate: sc-2204, K-562 whole cell lysate: sc-2203 or CCRF-CEM cell lysate: sc-2225.

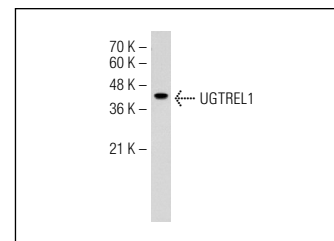
RECOMMENDED SECONDARY REAGENTS

To ensure optimal results, the following support (secondary) reagents are recommended: 1) Western Blotting: use goat anti-rabbit IgG-HRP: sc-2004 (dilution range: 1:2000-1:100,000) or Cruz Marker[™] compatible goat anti-rabbit IgG-HRP: sc-2030 (dilution range: 1:2000-1:5000), Cruz Marker[™] Molecular Weight Standards: sc-2035, TBS Blotto A Blocking Reagent: sc-2333 and Western Blotting Luminol Reagent: sc-2048. 2) Immunoprecipitation: use Protein A/G PLUS-Agarose: sc-2003 (0.5 ml agarose/2.0 ml).

DATA



UGTREL1 (D-23): sc-102148. Western blot analysis of UGTREL1 expression in K-562 (A) and CCRF-CEM (B) whole cell lysates.



UGTREL1 (D-23): sc-102148. Western blot analysis of UGTREL1 expression in Jurkat whole cell lysate.

STORAGE

Store at 4° C, **DO NOT FREEZE**. Stable for one year from the date of shipment. Non-hazardous. No MSDS required.