

ZMAT1 (K-18): sc-102178

BACKGROUND

Zinc-finger proteins contain DNA-binding domains and have a wide variety of functions, most of which encompass some form of transcriptional activation or repression. Zinc finger matrin-type protein 1 (ZMAT1) is a 638 amino acid protein that contains three matrin-type zinc fingers. The matrin-type zinc finger, which is very similar in structure to the classical DNA-binding C₂H₂ zinc finger, was first identified in the protein matrin-3. It has also been identified in several spliceosome RNA-binding proteins, suggesting a role in pre-mRNA binding. ZMAT1 is localized to the nucleus, and alternative splicing events produce two isoforms of this protein.

REFERENCES

1. Thiesen, H.J. 1990. Multiple genes encoding zinc finger domains are expressed in human T cells. *New Biol.* 2: 363-374.
2. Rossi, F., Forné, T., Antoine, E., Tazi, J., Brunel, C. and Cathala, G. 1996. Involvement of U1 small nuclear ribonucleoproteins (snRNP) in 5' splice site-U1 snRNP interaction. *J. Biol. Chem.* 271: 23985-23991.
3. Matsushima, Y., Matsumura, K. and Kitagawa, Y. 1997. Zinc finger-like motif conserved in a family of RNA binding proteins. *Biosci. Biotechnol. Biochem.* 61: 905-906.
4. Hibino, Y. 2000. Functional arrangement of genomic DNA and structure of nuclear matrix. *Yakugaku Zasshi* 120: 520-533.
5. Durand, S., Abadie, P., Angeletti, S. and Genti-Raimondi, S. 2003. Identification of multiple differentially expressed messenger RNAs in normal and pathological trophoblast. *Placenta* 24: 209-218.
6. Liu, J. and Stormo, G.D. 2008. Context-dependent DNA recognition code for C₂H₂ zinc-finger transcription factors. *Bioinformatics* 24: 1850-1857.

CHROMOSOMAL LOCATION

Genetic locus: ZMAT1 (human) mapping to Xq22.1.

SOURCE

ZMAT1 (K-18) is a purified rabbit polyclonal antibody raised against ZMAT1 of human origin.

PRODUCT

Each vial contains 50 µg IgG in 500 µl PBS with < 0.1% sodium azide, 0.1% gelatin and < 0.02% sucrose.

STORAGE

Store at 4° C, ****DO NOT FREEZE****. Stable for one year from the date of shipment. Non-hazardous. No MSDS required.

PROTOCOLS

See our web site at www.scbt.com or our catalog for detailed protocols and support products.

APPLICATIONS

ZMAT1 (K-18) is recommended for detection of ZMAT1 of human origin by Western Blotting (starting dilution 1:200, dilution range 1:100-1:1000), immunoprecipitation [1-2 µg per 100-500 µg of total protein (1 ml of cell lysate)] and solid phase ELISA (starting dilution 1:30, dilution range 1:30-1:3000).

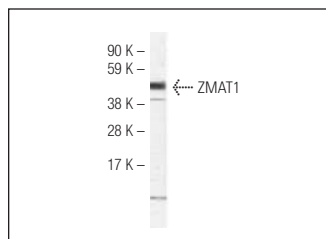
Suitable for use as control antibody for ZMAT1 siRNA (h): sc-91107, ZMAT1 shRNA Plasmid (h): sc-91107-SH and ZMAT1 shRNA (h) Lentiviral Particles: sc-91107-V.

Molecular Weight of ZMAT1: 75 kDa.

RECOMMENDED SECONDARY REAGENTS

To ensure optimal results, the following support (secondary) reagents are recommended: 1) Western Blotting: use goat anti-rabbit IgG-HRP: sc-2004 (dilution range: 1:2000-1:100,000) or Cruz Marker™ compatible goat anti-rabbit IgG-HRP: sc-2030 (dilution range: 1:2000-1:5000), Cruz Marker™ Molecular Weight Standards: sc-2035, TBS Blotto A Blocking Reagent: sc-2333 and Western Blotting Luminol Reagent: sc-2048. 2) Immunoprecipitation: use Protein A/G PLUS-Agarose: sc-2003 (0.5 ml agarose/2.0 ml).

DATA



ZMAT1 (K-18): sc-102178. Western blot analysis of ZMAT1 expression in fetal brain tissue extract.

RESEARCH USE

For research use only, not for use in diagnostic procedures.