

ZNF416 (B-17): sc-102218

BACKGROUND

Zinc-finger proteins contain DNA-binding domains and have a wide variety of functions, most of which encompass some form of transcriptional activation or repression. The majority of zinc-finger proteins contain a Krüppel-type DNA binding domain and a KRAB domain, which is thought to interact with KAP1, thereby recruiting histone modifying proteins. Zinc finger protein 416 (ZNF416) is a 594 amino acid member of the Krüppel C₂H₂-type zinc-finger protein family. Localized to the nucleus, ZNF416 contains twelve C₂H₂-type zinc fingers and one KRAB domain through which it is thought to be involved in DNA-binding and transcriptional regulation. The gene that encodes ZNF416 maps to chromosome 19, which is recognized for having the greatest gene density of the human chromosomes.

REFERENCES

1. Payre, F. and Vincent, A. 1988. Finger proteins and DNA-specific recognition: distinct patterns of conserved amino acids suggest different evolutionary modes. *FEBS Lett.* 234: 245-250.
2. Berg, J.M. 1988. Proposed structure for the zinc-binding domains from transcription factor IIIA and related proteins. *Proc. Natl. Acad. Sci. USA* 85: 99-102.
3. Thiesen, H.J. 1990. Multiple genes encoding zinc finger domains are expressed in human T cells. *New Biol.* 2: 363-374.
4. Rosenfeld, R. and Margalit, H. 1993. Zinc fingers: conserved properties that can distinguish between spurious and actual DNA-binding motifs. *J. Biomol. Struct. Dyn.* 11: 557-570.
5. Englbrecht, C.C., Schoof, H. and Böhm, S. 2004. Conservation, diversification and expansion of C₂H₂ zinc finger proteins in the *Arabidopsis thaliana* genome. *BMC Genomics* 5: 39-39.

CHROMOSOMAL LOCATION

Genetic locus: ZNF416 (human) mapping to 19q13.43.

SOURCE

ZNF416 (B-17) is a purified rabbit polyclonal antibody raised against ZNF416 of human origin.

PRODUCT

Each vial contains 100 µg IgG in 1.0 ml PBS with < 0.1% sodium azide, 0.1% gelatin and < 0.02% sucrose.

STORAGE

Store at 4° C, ****DO NOT FREEZE****. Stable for one year from the date of shipment. Non-hazardous. No MSDS required.

PROTOCOLS

See our web site at www.scbt.com or our catalog for detailed protocols and support products.

APPLICATIONS

ZNF416 (B-17) is recommended for detection of ZNF416 of human origin by Western Blotting (starting dilution 1:200, dilution range 1:100-1:1000), immunoprecipitation [1-2 µg per 100-500 µg of total protein (1 ml of cell lysate)] and solid phase ELISA (starting dilution 1:30, dilution range 1:30-1:3000).

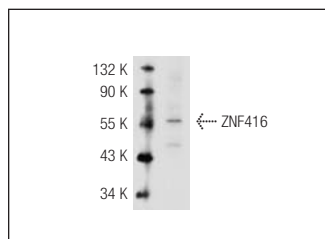
Suitable for use as control antibody for ZNF416 siRNA (h): sc-97595, ZNF416 shRNA Plasmid (h): sc-97595-SH and ZNF416 shRNA (h) Lentiviral Particles: sc-97595-V.

Molecular Weight of ZNF416: 67 kDa.

RECOMMENDED SECONDARY REAGENTS

To ensure optimal results, the following support (secondary) reagents are recommended: 1) Western Blotting: use goat anti-rabbit IgG-HRP: sc-2004 (dilution range: 1:2000-1:100,000) or Cruz Marker™ compatible goat anti-rabbit IgG-HRP: sc-2030 (dilution range: 1:2000-1:5000), Cruz Marker™ Molecular Weight Standards: sc-2035, TBS Blotto A Blocking Reagent: sc-2333 and Western Blotting Luminol Reagent: sc-2048. 2) Immunoprecipitation: use Protein A/G PLUS-Agarose: sc-2003 (0.5 ml agarose/2.0 ml).

DATA



ZNF416 (B-17): sc-102218. Western blot analysis of ZNF416 expression in 293T whole cell lysate.

RESEARCH USE

For research use only, not for use in diagnostic procedures.