



## ZNF559 (K-21): sc-102241

### BACKGROUND

Zinc finger proteins contain DNA-binding domains and have a wide variety of functions, most of which encompass some form of transcriptional activation or repression. The majority of zinc finger proteins contain a Krüppel-type DNA binding domain and a KRAB domain, which is thought to interact with KAP1, thereby recruiting histone modifying proteins. Zinc finger protein 559 (ZNF559) is a 538 amino acid member of the Krüppel C<sub>2</sub>H<sub>2</sub>-type zinc finger protein family. Localized to the nucleus, ZNF212 contains thirteen C<sub>2</sub>H<sub>2</sub>-type zinc fingers and one KRAB domain through which it is thought to be involved in DNA-binding and transcriptional regulation.

### REFERENCES

1. Payre, F. and Vincent, A. 1988. Finger proteins and DNA-specific recognition: distinct patterns of conserved amino acids suggest different evolutionary modes. *FEBS Lett.* 234: 245-250.
2. Berg, J.M. 1988. Proposed structure for the zinc-binding domains from transcription factor IIIA and related proteins. *Proc. Natl. Acad. Sci. USA* 85: 99-102.
3. Thiesen, H.J. 1990. Multiple genes encoding zinc finger domains are expressed in human T cells. *New Biol.* 2: 363-374.
4. Rosenfeld, R. and Margalit, H. 1993. Zinc fingers: conserved properties that can distinguish between spurious and actual DNA-binding motifs. *J. Biomol. Struct. Dyn.* 11: 557-570.
5. Abrink, M., Aveskogh, M. and Hellman, L. 1995. Isolation of cDNA clones for 42 different Krüppel-related zinc finger proteins expressed in the human monoblast cell line U-937. *DNA Cell Biol.* 14: 125-136.
6. Walter, L. and Günther, E. 2000. Physical mapping and evolution of the centromeric class I gene-containing region of the rat MHC. *Immunogenetics* 51: 829-837.
7. Durand, S., Abadie, P., Angeletti, S. and Genti-Raimondi, S. 2003. Identification of multiple differentially expressed messenger RNAs in normal and pathological trophoblast. *Placenta* 24: 209-218.
8. Tian, C.Y., Zhang, L.Q. and He, F.C. 2006. Progress in the study of KRAB zinc finger protein. *Yi Chuan* 28: 1451-1456.
9. Liu, J. and Stormo, G.D. 2008. Context-dependent DNA recognition code for C<sub>2</sub>H<sub>2</sub> zinc-finger transcription factors. *Bioinformatics* 24: 1850-1857.

### CHROMOSOMAL LOCATION

Genetic locus: ZNF559 (human) mapping to 19p13.2.

### STORAGE

Store at 4° C, **\*\*DO NOT FREEZE\*\***. Stable for one year from the date of shipment. Non-hazardous. No MSDS required.

### PROTOCOLS

See our web site at [www.scbt.com](http://www.scbt.com) or our catalog for detailed protocols and support products.

### SOURCE

ZNF559 (K-21) is a purified rabbit polyclonal antibody raised against ZNF559 of human origin.

### PRODUCT

Each vial contains 100 µg IgG in 1.0 ml PBS with < 0.1% sodium azide, 0.1% gelatin and < 0.02% sucrose.

### APPLICATIONS

ZNF559 (K-21) is recommended for detection of ZNF559 of human origin by Western Blotting (starting dilution 1:200, dilution range 1:100-1:1000), immunoprecipitation [1-2 µg per 100-500 µg of total protein (1 ml of cell lysate)] and solid phase ELISA (starting dilution 1:30, dilution range 1:30-1:3000).

Suitable for use as control antibody for ZNF559 siRNA (h): sc-97483, ZNF559 shRNA Plasmid (h): sc-97483-SH and ZNF559 shRNA (h) Lentiviral Particles: sc-97483-V.

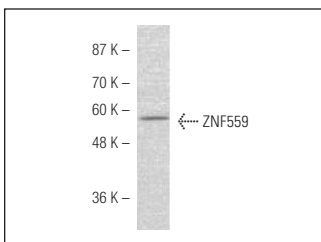
Molecular Weight of ZNF559: 62 kDa.

Positive Controls: Jurkat whole cell lysate: sc-2204.

### RECOMMENDED SECONDARY REAGENTS

To ensure optimal results, the following support (secondary) reagents are recommended: 1) Western Blotting: use goat anti-rabbit IgG-HRP: sc-2004 (dilution range: 1:2000-1:100,000) or Cruz Marker™ compatible goat anti-rabbit IgG-HRP: sc-2030 (dilution range: 1:2000-1:5000), Cruz Marker™ Molecular Weight Standards: sc-2035, TBS Blotto A Blocking Reagent: sc-2333 and Western Blotting Luminol Reagent: sc-2048. 2) Immunoprecipitation: use Protein A/G PLUS-Agarose: sc-2003 (0.5 ml agarose/2.0 ml).

### DATA



ZNF559 (K-21): sc-102241. Western blot analysis of ZNF559 expression in Jurkat whole cell lysate.

### RESEARCH USE

For research use only, not for use in diagnostic procedures.