

ACPL2 (N-18): sc-102292

BACKGROUND

ACPL2 (acid phosphatase-like 2), also known as UNQ370 or PRO706, is a 480 amino acid secreted protein that functions to catalyze the H₂O-dependent conversion of a phosphate monoester to an alcohol and a phosphate. Expressed as two alternatively spliced isoforms, ACPL2 is encoded by a gene that maps to chromosome 3, which houses over 1,100 genes, including a chemokine receptor (CKR) gene cluster and a variety of human cancer-related gene loci. Key tumor suppressing genes on chromosome 3 include those that encode the apoptosis mediator RASSF1, the cell migration regulator HYAL1 and the angiogenesis suppressor SEMA3B. Marfan Syndrome, porphyria, von Hippel-Lindau syndrome, osteogenesis imperfecta and Charcot-Marie-Tooth Disease are a few of the numerous genetic diseases associated with chromosome 3.

CHROMOSOMAL LOCATION

Genetic locus: ACPL2 (human) mapping to 3q23; Acpl2 (mouse) mapping to 9 E3.3.

SOURCE

ACPL2 (N-18) is an affinity purified rabbit polyclonal antibody raised against a peptide mapping within an internal region of ACPL2 of human origin.

PRODUCT

Each vial contains 100 µg IgG in 1.0 ml of PBS with < 0.1% sodium azide and 0.1% gelatin.

Blocking peptide available for competition studies, sc-102292 P, (100 µg peptide in 0.5 ml PBS containing < 0.1% sodium azide and 0.2% BSA).

STORAGE

Store at 4° C, ****DO NOT FREEZE****. Stable for one year from the date of shipment. Non-hazardous. No MSDS required.

APPLICATIONS

ACPL2 (N-18) is recommended for detection of ACPL2 of mouse, rat and human origin by Western Blotting (starting dilution 1:200, dilution range 1:100-1:1000), immunoprecipitation [1-2 µg per 100-500 µg of total protein (1 ml of cell lysate)], immunofluorescence (starting dilution 1:50, dilution range 1:50-1:500) and solid phase ELISA (starting dilution 1:30, dilution range 1:30-1:3000).

ACPL2 (N-18) is also recommended for detection of ACPL2 in additional species, including equine, canine and porcine.

Suitable for use as control antibody for ACPL2 siRNA (h): sc-78198, ACPL2 siRNA (m): sc-140823, ACPL2 shRNA Plasmid (h): sc-78198-SH, ACPL2 shRNA Plasmid (m): sc-140823-SH, ACPL2 shRNA (h) Lentiviral Particles: sc-78198-V and ACPL2 shRNA (m) Lentiviral Particles: sc-140823-V.

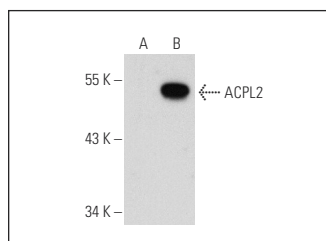
Molecular Weight of ACPL2: 55 kDa.

Positive Controls: ACPL2 (m2): 293T Lysate: sc-118216 or ACPL2 (h): 293T Lysate: sc-115369.

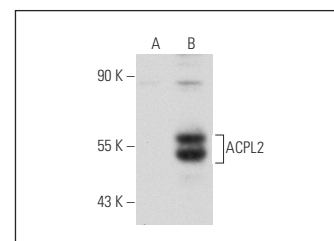
RECOMMENDED SECONDARY REAGENTS

To ensure optimal results, the following support (secondary) reagents are recommended: 1) Western Blotting: use goat anti-rabbit IgG-HRP: sc-2004 (dilution range: 1:2000-1:100,000) or Cruz Marker™ compatible goat anti-rabbit IgG-HRP: sc-2030 (dilution range: 1:2000-1:5000), Cruz Marker™ Molecular Weight Standards: sc-2035, TBS Blotto A Blocking Reagent: sc-2333 and Western Blotting Luminol Reagent: sc-2048. 2) Immunoprecipitation: use Protein A/G PLUS-Agarose: sc-2003 (0.5 ml agarose/2.0 ml). 3) Immunofluorescence: use goat anti-rabbit IgG-FITC: sc-2012 (dilution range: 1:100-1:400) or goat anti-rabbit IgG-TR: sc-2780 (dilution range: 1:100-1:400) with UltraCruz™ Mounting Medium: sc-24941.

DATA



ACPL2 (N-18): sc-102292. Western blot analysis of ACPL2 expression in non-transfected: sc-117752 (A) and mouse ACPL2 transfected: sc-118216 (B) 293T whole cell lysates.



ACPL2 (N-18): sc-102292. Western blot analysis of ACPL2 expression in non-transfected: sc-117752 (A) and human ACPL2 transfected: sc-115369 (B) 293T whole cell lysates.

RESEARCH USE

For research use only, not for use in diagnostic procedures.

PROTOCOLS

See our web site at www.scbt.com or our catalog for detailed protocols and support products.

MONOS
Satisfaction
Guaranteed

Try **ACPL2 (H-4): sc-377262**, our highly recommended monoclonal alternative to ACPL2 (N-18).