

BRD1 (N-12): sc-102351

BACKGROUND

BRD1 (bromodomain-containing protein 1, Peregrin-like protein) is a 1,058 amino acid protein that is encoded by the human gene BRD1 and shares homology to Peregrin, a protein thought to function as a transcription factor. BRD1, like Peregrin, is a nuclear protein that contains one bromodomain, one PHD-type zinc finger and one PWWP domain. The zinc finger and leucine zipper domains of Peregrin and BRD1 have significant homology to those of AF-10 and MLLT6, two proteins that are involved in various acute leukemias. This suggests a possible role of BRD1 in the development of leukemia. Additionally, the chromosomal region (22q12-13) containing BRD1 may contain one or more susceptibility genes for schizophrenia (SZ) and bipolar affective disorder (BPD), implicating BRD1 in the pathogenesis of these mental illnesses.

REFERENCES

- Gregorini, A., Sahin, F.I., Lillington, D.M., Meerabux, J., Saha, V., McCullagh, P., Bocci, M., Menevse, S., Papa, S. and Young, B.D. 1997. Gene BR140, which is related to AF-10 and AF17, maps to chromosome band 3p25. *Genes Chromosomes Cancer* 17: 269-272.
- Linder, B., Jones, L.K., Chaplin, T., Mohd-Sarip, A., Heinlein, U.A., Young, B.D. and Saha, V. 1999. Expression pattern and cellular distribution of the murine homologue of AF-10. *Biochim. Biophys. Acta* 1443: 285-296.
- McCullagh, P., Chaplin, T., Meerabux, J., Grenzelias, D., Lillington, D., Poulsom, R., Gregorini, A., Saha, V. and Young, B.D. 2000. The cloning, mapping and expression of a novel gene, BRL, related to the AF-10 leukaemia gene. *Oncogene* 18: 7442-7452.
- Loeb, C.R., Harris, J.L. and Craik, C.S. 2006. Granzyme B proteolyzes receptors important to proliferation and survival, tipping the balance toward apoptosis. *J. Biol. Chem.* 281: 28326-28335.
- Severinsen, J.E., Bjarkam, C.R., Kiaer-Larsen, S., Olsen, I.M., Nielsen, M.M., Blechingberg, J., Nielsen, A.L., Holm, I.E., Foldager, L., Young, B.D., Muir, W.J., Blackwood, D.H., Corydon, T.J., Mors, O. and Borglum, A.D. 2006. Evidence implicating BRD1 with brain development and susceptibility to both schizophrenia and bipolar affective disorder. *Mol. Psychiatry* 11: 1126-1138.
- Caudell, D. and Aplan, P.D. 2007. The role of CALM-AF10 gene fusion in acute leukemia. *Leukemia* 22: 678-685.

CHROMOSOMAL LOCATION

Genetic locus: BRD1 (human) mapping to 22q13.33; Brd1 (mouse) mapping to 15 E3.

SOURCE

BRD1 (N-12) is an affinity purified goat polyclonal antibody raised against a peptide mapping near the N-terminus of BRD1 of human origin.

STORAGE

Store at 4° C, **DO NOT FREEZE**. Stable for one year from the date of shipment. Non-hazardous. No MSDS required.

PRODUCT

Each vial contains 200 µg IgG in 1.0 ml of PBS with < 0.1% sodium azide and 0.1% gelatin.

Blocking peptide available for competition studies, sc-102351 P, (100 µg peptide in 0.5 ml PBS containing < 0.1% sodium azide and 0.2% BSA).

APPLICATIONS

BRD1 (N-12) is recommended for detection of BRD1 of mouse, rat and human origin by Western Blotting (starting dilution 1:200, dilution range 1:100-1:1000), immunoprecipitation [1-2 µg per 100-500 µg of total protein (1 ml of cell lysate)], immunofluorescence (starting dilution 1:50, dilution range 1:50-1:500) and solid phase ELISA (starting dilution 1:30, dilution range 1:30-1:3000); non cross-reactive with other BRD family members.

Suitable for use as control antibody for BRD1 siRNA (h): sc-72663, BRD1 siRNA (m): sc-141739, BRD1 shRNA Plasmid (h): sc-72663-SH, BRD1 shRNA Plasmid (m): sc-141739-SH, BRD1 shRNA (h) Lentiviral Particles: sc-72663-V and BRD1 shRNA (m) Lentiviral Particles: sc-141739-V.

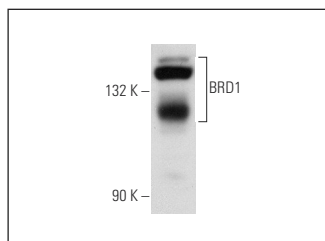
Molecular Weight of BRD1: 120 kDa.

Positive Controls: CCRF-CEM nuclear extract: sc-2146.

RECOMMENDED SECONDARY REAGENTS

To ensure optimal results, the following support (secondary) reagents are recommended: 1) Western Blotting: use donkey anti-goat IgG-HRP: sc-2020 (dilution range: 1:2000-1:100,000) or Cruz Marker™ compatible donkey anti-goat IgG-HRP: sc-2033 (dilution range: 1:2000-1:5000), Cruz Marker™ Molecular Weight Standards: sc-2035, TBS Blotto A Blocking Reagent: sc-2333 and Western Blotting Luminol Reagent: sc-2048. 2) Immunoprecipitation: use Protein A/G PLUS-Agarose: sc-2003 (0.5 ml agarose/2.0 ml). 3) Immunofluorescence: use donkey anti-goat IgG-FITC: sc-2024 (dilution range: 1:100-1:400) or donkey anti-goat IgG-TR: sc-2783 (dilution range: 1:100-1:400) with UltraCruz™ Mounting Medium: sc-24941.

DATA



BRD1 (N-12): sc-102351. Western blot analysis of BRD1 expression in CCRF-CEM nuclear extract.

RESEARCH USE

For research use only, not for use in diagnostic procedures.

PROTOCOLS

See our web site at www.scbt.com or our catalog for detailed protocols and support products.