

C3orf32 (S-19): sc-102382

BACKGROUND

C3orf32 (chromosome 3 open reading frame 32), also known as fls485, is a 353 amino acid protein encoded by a gene that maps to human chromosome 3p26.1. Chromosome 3 is made up of approximately 214 million bases encoding over 1,100 genes. Notably, there is a chemokine receptor gene cluster and a variety of human cancer related loci on chromosome 3. Particular regions of the chromosome 3 short arm are deleted in many types of cancer cells. Key tumor suppressing genes on chromosome 3 encode apoptosis mediator RASSF1, cell migration regulator HYAL1 and angiogenesis suppressor SEMA3B. Marfan Syndrome, porphyria, von Hippel-Lindau syndrome, osteogenesis imperfecta and Charcot-Marie-Tooth disease are a few of the numerous genetic diseases associated with chromosome 3.

REFERENCES

- Müller, S., et al. 2000. Molecular cytogenetic dissection of human chromosomes 3 and 21 evolution. *Proc. Natl. Acad. Sci. USA* 97: 206-211.
- Braga, E.A., et al. 2003. New tumor suppressor genes in hot spots of human chromosome 3: new methods of identification. *Mol. Biol.* 37: 194-211.
- Tsend-Ayush, E., et al. 2004. Plasticity of human chromosome 3 during primate evolution. *Genomics* 83: 193-202.
- Yue, Y., et al. 2005. Comparative cytogenetics of human chromosome 3q21.3 reveals a hot spot for ectopic recombination in hominoid evolution. *Genomics* 85: 36-47.
- Darai, E., et al. 2005. Evolutionarily plastic regions at human 3p21.3 coincide with tumor breakpoints identified by the "elimination test". *Genomics* 86: 1-12.

CHROMOSOMAL LOCATION

Genetic locus: SSUH2 (human) mapping to 3p26.1; Ssu2 (mouse) mapping to 6 E3.

SOURCE

C3orf32 (S-19) is an affinity purified rabbit polyclonal antibody raised against a peptide mapping within an internal region of C3orf32 of human origin.

PRODUCT

Each vial contains 100 µg IgG in 1.0 ml of PBS with < 0.1% sodium azide and 0.1% gelatin.

Blocking peptide available for competition studies, sc-102382 P, (100 µg peptide in 0.5 ml PBS containing < 0.1% sodium azide and 0.2% BSA).

STORAGE

Store at 4° C, ****DO NOT FREEZE****. Stable for one year from the date of shipment. Non-hazardous. No MSDS required.

PROTOCOLS

See our web site at www.scbt.com or our catalog for detailed protocols and support products.

APPLICATIONS

C3orf32 (S-19) is recommended for detection of C3orf32 of human origin, D630042P16Rik of mouse origin and the corresponding rat homolog by Western Blotting (starting dilution 1:200, dilution range 1:100-1:1000), immunoprecipitation [1-2 µg per 100-500 µg of total protein (1 ml of cell lysate)], immunofluorescence (starting dilution 1:50, dilution range 1:50-1:500) and solid phase ELISA (starting dilution 1:30, dilution range 1:30-1:3000).

C3orf32 (S-19) is also recommended for detection of C3orf32 in additional species, including canine.

Suitable for use as control antibody for C3orf32 siRNA (h): sc-78349, D630042P16Rik siRNA (m): sc-142843, C3orf32 shRNA Plasmid (h): sc-78349-SH, D630042P16Rik shRNA Plasmid (m): sc-142843-SH, C3orf32 shRNA (h) Lentiviral Particles: sc-78349-V and D630042P16Rik shRNA (m) Lentiviral Particles: sc-142843-V.

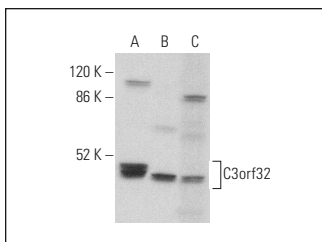
Molecular Weight of C3orf32: 40 kDa.

Positive Controls: K-562 whole cell lysate: sc-2203, RAW 264.7 whole cell lysate: sc-2211 or KNRK whole cell lysate: sc-2214.

RECOMMENDED SECONDARY REAGENTS

To ensure optimal results, the following support (secondary) reagents are recommended: 1) Western Blotting: use goat anti-rabbit IgG-HRP: sc-2004 (dilution range: 1:2000-1:100,000) or Cruz Marker™ compatible goat anti-rabbit IgG-HRP: sc-2030 (dilution range: 1:2000-1:5000), Cruz Marker™ Molecular Weight Standards: sc-2035, TBS Blotto A Blocking Reagent: sc-2333 and Western Blotting Luminol Reagent: sc-2048. 2) Immunoprecipitation: use Protein A/G PLUS-Agarose: sc-2003 (0.5 ml agarose/2.0 ml). 3) Immunofluorescence: use goat anti-rabbit IgG-FITC: sc-2012 (dilution range: 1:100-1:400) or goat anti-rabbit IgG-TR: sc-2780 (dilution range: 1:100-1:400) with UltraCruz™ Mounting Medium: sc-24941.

DATA



C3orf32 (S-19): sc-102382. Western blot analysis of C3orf32 expression in KNRK (A), RAW 264.7 (B) and PANC-1 (C) whole cell lysates.

RESEARCH USE

For research use only, not for use in diagnostic procedures.