

CCDC66 (T-20): sc-102420

BACKGROUND

CCDC66 (coiled-coil domain-containing protein 66) is a 948 amino acid protein that exists as 4 alternatively spliced isoforms. The gene encoding CCDC66 maps to human chromosome 3p14.3 and mouse chromosome 14 A3. Human chromosome 3 houses over 1,100 genes, including a chemokine receptor (CKR) gene cluster and a variety of human cancer-related gene loci. Key tumor suppressing genes on chromosome 3 include those that encode the apoptosis mediator RASSF1, the cell migration regulator HYAL1 and the angiogenesis suppressor SEMA3B. Marfan syndrome, porphyria, von Hippel-Lindau syndrome, osteogenesis imperfecta and Charcot-Marie-Tooth disease are a few of the numerous genetic diseases associated with chromosome 3.

REFERENCES

1. De Jonghe, P., et al. 1997. Mutilating neuropathic ulcerations in a chromosome 3q13-q22 linked Charcot-Marie-Tooth disease type 2B family. *J. Neurol. Neurosurg. Psychiatr.* 62: 570-573.
2. Maho, A., et al. 1999. Mapping of the CCXCR1, CX3CR1, CCBP2 and CCR9 genes to the CCR cluster within the 3p21.3 region of the human genome. *Cytogenet. Cell Genet.* 87: 265-268.
3. Braga, E.A., et al. 2003. New tumor suppressor genes in hot spots of human chromosome 3: new methods of identification]. *Mol. Biol.* 37: 194-211.
4. Tsend-Ayush, E., et al. 2004. Plasticity of human chromosome 3 during primate evolution. *Genomics* 83: 193-202.
5. Pfeifer, G.P., et al. 2005. Methylation of the tumor suppressor gene RASSF1A in human tumors. *Biochemistry* 70: 576-583.
6. Yue, Y., et al. 2005. Comparative cytogenetics of human chromosome 3q21.3 reveals a hot spot for ectopic recombination in hominoid evolution. *Genomics* 85: 36-47.
7. Nair, P.N., et al. 2007. High-resolution analysis of 3p deletion in neuroblastoma and differential methylation of the SEMA3B tumor suppressor gene. *Cancer Genet. Cytogenet.* 174: 100-110.
8. Toulza, E., et al. 2007. Large-scale identification of human genes implicated in epidermal barrier function. *Genome Biol.* 8: R107.

CHROMOSOMAL LOCATION

Genetic locus: CCDC66 (human) mapping to 3p14.3; Ccdc66 (mouse) mapping to 14 A3.

SOURCE

CCDC66 (T-20) is an affinity purified rabbit polyclonal antibody raised against a peptide mapping within an internal region of CCDC66 of human origin.

PRODUCT

Each vial contains 100 µg IgG in 1.0 ml of PBS with < 0.1% sodium azide and 0.1% gelatin.

Blocking peptide available for competition studies, ready P, (100 µg peptide in 0.5 ml PBS containing < 0.1% sodium azide and 0.2% BSA).

APPLICATIONS

CCDC66 (T-20) is recommended for detection of CCDC66 of mouse and human origin by Western Blotting (starting dilution 1:200, dilution range 1:100-1:1000), immunoprecipitation [1-2 µg per 100-500 µg of total protein (1 ml of cell lysate)], immunofluorescence (starting dilution 1:50, dilution range 1:50-1:500) and solid phase ELISA (starting dilution 1:30, dilution range 1:30-1:3000); non cross-reactive with other CCDC family members.

CCDC66 (T-20) is also recommended for detection of CCDC66 in additional species, including equine and porcine

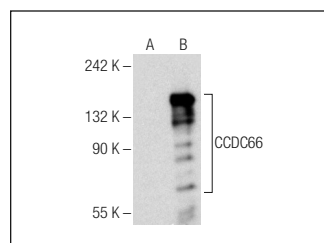
Suitable for use as control antibody for CCDC66 siRNA (h): sc-78499, CCDC66 siRNA (m): sc-105184, CCDC66 shRNA Plasmid (h): sc-78499-SH, CCDC66 shRNA Plasmid (m): sc-105184-SH, CCDC66 shRNA (h) Lentiviral Particles: sc-78499-V and CCDC66 shRNA (m) Lentiviral Particles: sc-105184-V.

Positive Controls: CCDC66 (h): 293T Lysate: sc-373061.

RECOMMENDED SECONDARY REAGENTS

To ensure optimal results, the following support (secondary) reagents are recommended: 1) Western Blotting: use goat anti-rabbit IgG-HRP: sc-2004 (dilution range: 1:2000-1:100,000) or Cruz Marker™ compatible goat anti-rabbit IgG-HRP: sc-2030 (dilution range: 1:2000-1:5000), Cruz Marker™ Molecular Weight Standards: sc-2035, TBS Blotto A Blocking Reagent: sc-2333 and Western Blotting Luminol Reagent: sc-2048. 2) Immunoprecipitation: use Protein A/G PLUS-Agarose: sc-2003 (0.5 ml agarose/2.0 ml). 3) Immunofluorescence: use goat anti-rabbit IgG-FITC: sc-2012 (dilution range: 1:100-1:400) or goat anti-rabbit IgG-TR: sc-2780 (dilution range: 1:100-1:400) with UltraCruz™ Mounting Medium: sc-24941.

DATA



CCDC66 (T-20): sc-102420. Western blot analysis of CCDC66 expression in non-transfected: sc-117752 (A) and human CCDC66 transfected: sc-373061 (B) 293T whole cell lysates.

STORAGE

Store at 4° C, ****DO NOT FREEZE****. Stable for one year from the date of shipment. Non-hazardous. No MSDS required.

RESEARCH USE

For research use only, not for use in diagnostic procedures.

PROTOCOLS

See our web site at www.scbt.com or our catalog for detailed protocols and support products.