

# CD10 (P-13): sc-102426

## BACKGROUND

CD10, also called the common acute lymphoblastic leukemia antigen (CALLA) and neutral endopeptidase (NEP), is a type II integral membrane glycoprotein. CD10 acts as a zinc metalloprotease that cleaves a variety of biologically active peptides including Angiotensins I and II. It is expressed on early B and T lymphoid precursors, B blasts, some granulocytes, bone marrow stromal cells and certain epithelial cells including some tumor cell lines. CD10 is used as a marker of common acute lymphocytic leukemias and some lymphomas.

## REFERENCES

- Horejsi, V., Angelisova, P., Bazil, V., Kristofova, H., Stoyanov, S., Stefanova, I., Hausner, P., Vosecky, M. and Hilgert, I. 1988. Monoclonal antibodies against human leucocyte antigens. II. Antibodies against CD45 (T200), CD3 (T3), CD43, CD10 (CALLA), transferrin receptor (T9), a novel broadly expressed 18 kDa antigen (MEM-43) and a novel antigen of restricted expression (MEM-74). *Folia Biol.* 34: 23-34.
- Shipp, M.A. and Look, A.T. 1993. Hematopoietic differentiation antigens that are membrane-associated enzymes: cutting is the key! *Blood* 82: 1052-1070.
- Schlossman, S.L., Bloumsell, W., Gilks, J.M., Harlan, C., Kishimoto, J., Ritz, S., Shaw, R., Silverstein, T., Springer, T.F., Tedder and R.F. Todd, eds. 1995. *Leukocyte Typing V: White Cell Differentiation Antigens*. Oxford: Oxford University Press.
- Lu, B., Gerard, N.P., Kolakowski, L.F., Bozza, M., Zurakowski, D., Finco, O., Carroll, M.C. and Gerard, C. 1995. Neutral endopeptidase modulation of septic shock. *J. Exper. Med.* 181: 2271-2275.
- Kalled, S.L., Siva, N., Stein, H. and Reinherz, E.L. 1995. The distribution of CD10 (NEP 24.11, CALLA) in human and mice is similar in non-lymphoid organs but differs within the hematopoietic system: absence on murine T and B lymphoid progenitors. *Eur. J. Immunol.* 25: 677-687.
- Barclay, A.N., Brown, M.H., Law, S.K.A., McKnight, A.J., Tomlinson, M.G. and van der Merwe, P.A., eds. 1997. *The Leukocyte Antigens Facts Book*, 2nd Edition, CD10 Section, New York: Academic Press, 154.
- Bene, M.C. and Faure, G.C. 1997. CD10 in acute leukemias. *Haematologica* 82: 205-210.
- LocusLink Report (LocusID: 4311). <http://www.ncbi.nlm.nih.gov/LocusLink/>

## CHROMOSOMAL LOCATION

Genetic locus: MME (human) mapping to 3q25.2; Mme (mouse) mapping to 3 E1.

## SOURCE

CD10 (P-13) is an affinity purified rabbit polyclonal antibody raised against a peptide mapping within an internal region of CD10 of human origin.

## STORAGE

Store at 4° C, **\*\*DO NOT FREEZE\*\***. Stable for one year from the date of shipment. Non-hazardous. No MSDS required.

## PRODUCT

Each vial contains 100 µg IgG in 1.0 ml of PBS with < 0.1% sodium azide and 0.1% gelatin.

Blocking peptide available for competition studies, ready P, (100 µg peptide in 0.5 ml PBS containing < 0.1% sodium azide and 0.2% BSA).

## APPLICATIONS

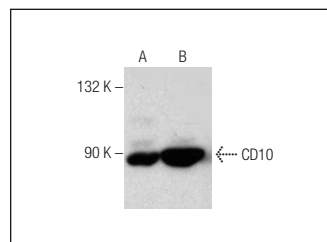
CD10 (P-13) is recommended for detection of CD10 of mouse, rat and human origin by Western Blotting (starting dilution 1:200, dilution range 1:100-1:1000), immunoprecipitation [1-2 µg per 100-500 µg of total protein (1 ml of cell lysate)], immunofluorescence (starting dilution 1:50, dilution range 1:50-1:500) and solid phase ELISA (starting dilution 1:30, dilution range 1:30-1:3000); non cross-reactive with other CD family members.

Suitable for use as control antibody for CD10 siRNA (h): sc-29959, CD10 siRNA (m): sc-37230, CD10 shRNA Plasmid (h): sc-29959-SH, CD10 shRNA Plasmid (m): sc-37230-SH, CD10 shRNA (h) Lentiviral Particles: sc-29959-V and CD10 shRNA (m) Lentiviral Particles: sc-37230-V.

Molecular Weight of CD10: 100 kDa.

Positive Controls: CD10 (h): 293T lysate: sc-111697, GA-10 whole cell lysate or JM1 whole cell lysate.

## DATA



CD10 (P-13): sc-102426. Western blot analysis of CD10 expression in GA-10 (A) and JM1 (B) whole cell lysates.

## RESEARCH USE

For research use only, not for use in diagnostic procedures.

## PROTOCOLS

See our web site at [www.scbt.com](http://www.scbt.com) or our catalog for detailed protocols and support products.



Try **CD10 (F-4): sc-46656** or **CD10 (2A1H5E1): sc-65990**, our highly recommended monoclonal alternatives to CD10 (P-13). Also, for AC, HRP, FITC, PE, Alexa Fluor® 488 and Alexa Fluor® 647 conjugates, see **CD10 (F-4): sc-46656**.