

# LEKR1 (S-12): sc-102526

## BACKGROUND

LEKR1 (leucine, glutamate and lysine rich 1) is a 692 amino acid protein that is encoded by a gene that maps to human chromosome 3q25.31. Chromosome 3 houses over 1,100 genes, including a chemokine receptor (CKR) gene cluster and a variety of human cancer-related gene loci. Key tumor suppressing genes on chromosome 3 include those that encode the apoptosis mediator RASSF1, the cell migration regulator HYAL1 and the angiogenesis suppressor SEMA3B. Marfan syndrome, porphyria, von Hippel-Lindau syndrome, osteogenesis imperfecta and Charcot-Marie-tooth disease are a few of the numerous genetic diseases associated with chromosome 3.

## REFERENCES

1. De Jonghe, P., et al. 1997. Mutilating neuropathic ulcerations in a chromosome 3q13-q22 linked Charcot-Marie-tooth disease type 2B family. *J. Neurol. Neurosurg. Psychiatr.* 62: 570-573.
2. Maho, A., et al. 1999. Mapping of the CCXCR1, CX3CR1, CCBP2 and CCR9 genes to the CCR cluster within the 3p21.3 region of the human genome. *Cytogenet. Cell Genet.* 87: 265-268.
3. Robinson, P.N. and Godfrey, M. 2000. The molecular genetics of Marfan syndrome and related microfibrilopathies. *J. Med. Genet.* 37: 9-25.
4. Braga, E.A., et al. 2003. New tumor suppressor genes in hot spots of human chromosome 3: new methods of identification. *Mol. Biol.* 37: 194-211.
5. Tsend-Ayush, E., et al. 2004. Plasticity of human chromosome 3 during primate evolution. *Genomics* 83: 193-202.
6. Pfeifer, G.P. and Dammann, R. 2005. Methylation of the tumor suppressor gene RASSF1A in human tumors. *Biochemistry* 70: 576-583.
7. Yue, Y., et al. 2005. Comparative cytogenetics of human chromosome 3q21.3 reveals a hot spot for ectopic recombination in hominoid evolution. *Genomics* 85: 36-47.
8. Nair, P.N., et al. 2007. High-resolution analysis of 3p deletion in neuroblastoma and differential methylation of the SEMA3B tumor suppressor gene. *Cancer Genet. Cytogenet.* 174: 100-110.

## CHROMOSOMAL LOCATION

Genetic locus: LEKR1 (human) mapping to 3q25.31.

## SOURCE

LEKR1 (S-12) is an affinity purified goat polyclonal antibody raised against a peptide mapping within an internal region of LEKR1 of human origin.

## STORAGE

Store at 4° C, **\*\*DO NOT FREEZE\*\***. Stable for one year from the date of shipment. Non-hazardous. No MSDS required.

## PROTOCOLS

See our web site at [www.scbt.com](http://www.scbt.com) or our catalog for detailed protocols and support products.

## PRODUCT

Each vial contains 200 µg IgG in 1.0 ml of PBS with < 0.1% sodium azide and 0.1% gelatin.

Blocking peptide available for competition studies, sc-102526 P, (100 µg peptide in 0.5 ml PBS containing < 0.1% sodium azide and 0.2% BSA).

## APPLICATIONS

LEKR1 (S-12) is recommended for detection of LEKR1 of human origin by Western Blotting (starting dilution 1:200, dilution range 1:100-1:1000), immunoprecipitation [1-2 µg per 100-500 µg of total protein (1 ml of cell lysate)], immunofluorescence (starting dilution 1:50, dilution range 1:50-1:500) and solid phase ELISA (starting dilution 1:30, dilution range 1:30-1:3000).

Suitable for use as control antibody for LEKR1 siRNA (h): sc-77932, LEKR1 shRNA Plasmid (h): sc-77932-SH and LEKR1 shRNA (h) Lentiviral Particles: sc-77932-V.

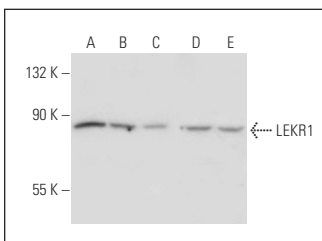
Molecular Weight of LEKR1: 87 kDa

Positive Controls: HeLa whole cell lysate: sc-2200, NTERA-2 cl.D1 whole cell lysate: sc-364181 or TE671 cell lysate: sc-2416.

## RECOMMENDED SECONDARY REAGENTS

To ensure optimal results, the following support (secondary) reagents are recommended: 1) Western Blotting: use donkey anti-goat IgG-HRP: sc-2020 (dilution range: 1:2000-1:100,000) or Cruz Marker™ compatible donkey anti-goat IgG-HRP: sc-2033 (dilution range: 1:2000-1:5000), Cruz Marker™ Molecular Weight Standards: sc-2035, TBS Blotto A Blocking Reagent: sc-2333 and Western Blotting Luminol Reagent: sc-2048. 2) Immunoprecipitation: use Protein A/G PLUS-Agarose: sc-2003 (0.5 ml agarose/2.0 ml). 3) Immunofluorescence: use donkey anti-goat IgG-FITC: sc-2024 (dilution range: 1:100-1:400) or donkey anti-goat IgG-TR: sc-2783 (dilution range: 1:100-1:400) with UltraCruz™ Mounting Medium: sc-24941.

## DATA



LEKR1 (S-12): sc-102526. Western blot analysis of LEKR1 expression in HeLa (A), NTERA-2 cl.D1 (B), A-431 (C), TE671 (D) and IMR-32 (E) whole cell lysates.

## RESEARCH USE

For research use only, not for use in diagnostic procedures.