

# C1QBP (K-18): sc-10257

## BACKGROUND

The human complement subcomponent C1q associates with C1r and C1s in order to yield the first component of the serum complement system (SCS). The SCS contains over 30 glycoproteins that influence physiological mechanisms of the body in response to immune complex (the classical pathway), carbohydrate (the lectin pathway) or bacterial (alternative pathway) initiation. C1q binding protein (C1QBP), also designated gC1q-R, p32 (p33) or HABP1 (hyaluronan-binding protein 1), is known to bind the globular heads of C1q molecules and inhibit C1 activation. C1QBP has been described as a complement receptor for C1q on B cells, neutrophils and mast cells. The C1QBP protein may form homodimers. C1QBP is expressed in vascular endothelial cells and has been found to be a multifunctional protein interacting with elements of complement, coagulation and kinin systems. In addition, C1QBP is a subunit of pre-mRNA splicing factor SF2/ASF.

## CHROMOSOMAL LOCATION

Genetic locus: C1QBP (human) mapping to 17p13.2; C1qbp (mouse) mapping to 11 B4.

## SOURCE

C1QBP (K-18) is an affinity purified goat polyclonal antibody raised against a peptide mapping near the C-terminus of C1QBP of human origin.

## PRODUCT

Each vial contains 200 µg IgG in 1.0 ml of PBS with < 0.1% sodium azide and 0.1% gelatin.

Blocking peptide available for competition studies, sc-10257 P, (100 µg peptide in 0.5 ml PBS containing < 0.1% sodium azide and 0.2% BSA).

## RESEARCH USE

For research use only, not for use in diagnostic procedures.

## APPLICATIONS

C1QBP (K-18) is recommended for detection of C1QBP of mouse, rat and human origin by Western Blotting (starting dilution 1:200, dilution range 1:100-1:1000), immunoprecipitation [1-2 µg per 100-500 µg of total protein (1 ml of cell lysate)], immunofluorescence (starting dilution 1:50, dilution range 1:50-1:500), immunohistochemistry (including paraffin-embedded sections) (starting dilution 1:50, dilution range 1:50-1:500) and solid phase ELISA (starting dilution 1:30, dilution range 1:30-1:3000).

C1QBP (K-18) is also recommended for detection of C1QBP in additional species, including equine, canine, bovine and avian.

Suitable for use as control antibody for C1QBP siRNA (h): sc-42880, C1QBP siRNA (m): sc-42881, C1QBP shRNA Plasmid (h): sc-42880-SH, C1QBP shRNA Plasmid (m): sc-42881-SH, C1QBP shRNA (h) Lentiviral Particles: sc-42880-V and C1QBP shRNA (m) Lentiviral Particles: sc-42881-V.

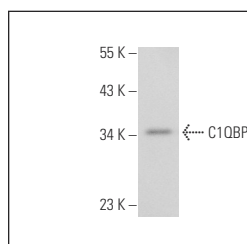
Molecular Weight of C1QBP: 32 kDa.

Positive Controls: HeLa whole cell lysate: sc-2200, Jurkat whole cell lysate: sc-2204 or Hep G2 cell lysate: sc-2227.

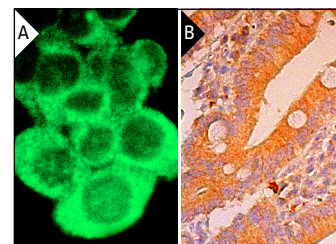
## RECOMMENDED SECONDARY REAGENTS

To ensure optimal results, the following support (secondary) reagents are recommended: 1) Western Blotting: use donkey anti-goat IgG-HRP: sc-2020 (dilution range: 1:2000-1:100,000) or Cruz Marker™ compatible donkey anti-goat IgG-HRP: sc-2033 (dilution range: 1:2000-1:5000), Cruz Marker™ Molecular Weight Standards: sc-2035, TBS Blotto A Blocking Reagent: sc-2333 and Western Blotting Luminol Reagent: sc-2048. 2) Immunoprecipitation: use Protein A/G PLUS-Agarose: sc-2003 (0.5 ml agarose/2.0 ml). 3) Immunofluorescence: use donkey anti-goat IgG-FITC: sc-2024 (dilution range: 1:100-1:400) or donkey anti-goat IgG-TR: sc-2783 (dilution range: 1:100-1:400) with UltraCruz™ Mounting Medium: sc-24941. 4) Immunohistochemistry: use ImmunoCruz™: sc-2053 or ABC: sc-2023 goat IgG Staining Systems.

## DATA



C1QBP (K-18): sc-10257. Western blot analysis of C1QBP expression in Hep G2 whole cell lysate.



C1QBP (K-18): sc-10257. Immunofluorescence staining of methanol-fixed HeLa cells showing cytoplasmic staining (A). Immunoperoxidase staining of formalin fixed, paraffin-embedded human duodenum tissue showing cytoplasmic staining of glandular cells (B).

## STORAGE

Store at 4° C, \*\*DO NOT FREEZE\*\*. Stable for one year from the date of shipment. Non-hazardous. No MSDS required.

## PROTOCOLS

See our web site at [www.scbt.com](http://www.scbt.com) or our catalog for detailed protocols and support products.

**MONOS**  
Satisfaction  
Guaranteed

Try **C1QBP (H-9): sc-271200** or **C1QBP (B-6): sc-271201**, our highly recommended monoclonal alternatives to C1QBP (K-18).