

IGSF11 (N-13): sc-102613

BACKGROUND

IGSF11 (immunoglobulin superfamily, member 11) is also known as BTIGSF (brain and testis-specific immunoglobulin superfamily protein) or VSIG3 (V-set and immunoglobulin domain-containing protein 3) and is a 431 amino acid protein that is expressed as three isoforms. IGSF11 is highly expressed in testis and ovary and is also expressed in brain, kidney and skeletal muscle, localized to the cellular membrane as a single-pass membrane protein. IGSF11 is an immunoglobulin with V-type and C2-type domains that function in molecular recognition. When IGSF11 is in the trans position, it plays an important role in cell-cell adhesion via both homophilic and heterophilic interactions with other molecules. These cell-cell interactions are also thought to be important for neuronal cell interactions, such as neuron-neuron or neuron-glia interactions, which are important for the development and function of the central nervous system. In addition, IGSF11 might also be involved interactions between Sertoli cells and spermatocytes, which are important associations during spermatogenesis. The IGSF11 gene is commonly upregulated in gastric cancer and IGSF11 is highly expressed in many types of human tumors, indicating that it may be useful as a target for immunotherapy.

CHROMOSOMAL LOCATION

Genetic locus: IGSF11 (human) mapping to 3q13.32; Igsf11 (mouse) mapping to 16 B4.

SOURCE

IGSF11 (N-13) is an affinity purified goat polyclonal antibody raised against a peptide mapping near the N-terminus of IGSF11 of human origin.

PRODUCT

Each vial contains 200 µg IgG in 1.0 ml of PBS with < 0.1% sodium azide and 0.1% gelatin.

Blocking peptide available for competition studies, sc-102613 P, (100 µg peptide in 0.5 ml PBS containing < 0.1% sodium azide and 0.2% BSA).

APPLICATIONS

IGSF11 (N-13) is recommended for detection of IGSF11 of mouse, rat and human origin by Western Blotting (starting dilution 1:200, dilution range 1:100-1:1000), immunoprecipitation [1-2 µg per 100-500 µg of total protein (1 ml of cell lysate)], immunofluorescence (starting dilution 1:50, dilution range 1:50-1:500) and solid phase ELISA (starting dilution 1:30, dilution range 1:30-1:3000); non cross-reactive with other IGSF family members.

IGSF11 (N-13) is also recommended for detection of IGSF11 in additional species, including equine, canine and bovine.

Suitable for use as control antibody for IGSF11 siRNA (h): sc-77879, IGSF11 siRNA (m): sc-146187, IGSF11 shRNA Plasmid (h): sc-77879-SH, IGSF11 shRNA Plasmid (m): sc-146187-SH, IGSF11 shRNA (h) Lentiviral Particles: sc-77879-V and IGSF11 shRNA (m) Lentiviral Particles: sc-146187-V.

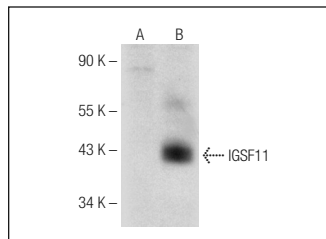
Molecular Weight of IGSF11: 44 kDa.

Positive Controls: IGSF11 (h): 293T Lysate: sc-114446 or mouse kidney extract: sc-2255.

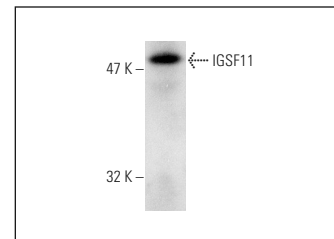
RECOMMENDED SECONDARY REAGENTS

To ensure optimal results, the following support (secondary) reagents are recommended: 1) Western Blotting: use donkey anti-goat IgG-HRP: sc-2020 (dilution range: 1:2000-1:100,000) or Cruz Marker™ compatible donkey anti-goat IgG-HRP: sc-2033 (dilution range: 1:2000-1:5000), Cruz Marker™ Molecular Weight Standards: sc-2035, TBS Blotto A Blocking Reagent: sc-2333 and Western Blotting Luminol Reagent: sc-2048. 2) Immunoprecipitation: use Protein A/G PLUS-Agarose: sc-2003 (0.5 ml agarose/2.0 ml). 3) Immunofluorescence: use donkey anti-goat IgG-FITC: sc-2024 (dilution range: 1:100-1:400) or donkey anti-goat IgG-TR: sc-2783 (dilution range: 1:100-1:400) with UltraCruz™ Mounting Medium: sc-24941.

DATA



IGSF11 (N-13): sc-102613. Western blot analysis of IGSF11 expression in non-transfected: sc-117752 (A) and human IGSF11 transfected: sc-114446 (B) 293T whole cell lysates.



IGSF11 (N-13): sc-102613. Western blot analysis of IGSF11 expression in mouse kidney tissue extract.

STORAGE

Store at 4° C, ****DO NOT FREEZE****. Stable for one year from the date of shipment. Non-hazardous. No MSDS required.

RESEARCH USE

For research use only, not for use in diagnostic procedures.

PROTOCOLS

See our web site at www.scbt.com or our catalog for detailed protocols and support products.

MONOS
Satisfaction
Guaranteed

Try **IGSF11 (H-9): sc-393816**, our highly recommended monoclonal alternative to IGSF11 (N-13).