

KLHL24 (N-18): sc-102646

BACKGROUND

KLHL24 (kelch-like protein 24) is a 600 amino acid protein that is related to the *Drosophila* kelch protein, which is required to maintain actin organization in ovarian ring canals. Mutations affecting kelch function result in failure of kelch to associate with the ring canals and subsequent female sterility. Human KLHL24 protein contains six kelch repeats, one BACK (BTB/kelch associated) domain and one BTB (POZ) domain. The BTB (broad-complex, tramtrack and bric a brac) domain, also known as the POZ (poxvirus and zinc finger) domain, is an N-terminal homodimerization domain that contains multiple copies of kelch repeats and/or C₂H₂-type zinc fingers. KLHL24 is widely expressed in brain where it regulates the function of GluR-6 by binding to its C-terminal domain. There are three isoforms of KLHL24 that are produced as a result of alternative splicing events.

REFERENCES

- Albagli, O., Dhordain, P., Deweindt, C., Lecocq, G. and Leprince, D. 1995. The BTB/POZ domain: a new protein-protein interaction motif common to DNA- and Actin-binding proteins. *Cell Growth Differ.* 6: 1193-1198.
- Robinson, D.N. and Cooley, L. 1997. *Drosophila* kelch is an oligomeric ring canal Actin organizer. *J. Cell Biol.* 138: 799-810.
- Melnick, A., Ahmad, K.F., Arai, S., Polinger, A., Ball, H., Borden, K.L., Carlile, G.W., Prive, G.G. and Licht, J.D. 2000. In-depth mutational analysis of the promyelocytic leukemia zinc finger BTB/POZ domain reveals motifs and residues required for biological and transcriptional functions. *Mol. Cell Biol.* 20: 6550-6567.
- Adams, J., Kelso, R. and Cooley, L. 2000. The kelch repeat superfamily of proteins: propellers of cell function. *Trends Cell Biol.* 10: 17-24.
- Kelso, R.J., Hudson, A.M. and Cooley, L. 2002. *Drosophila* Kelch regulates Actin organization via Src64-dependent tyrosine phosphorylation. *J. Cell Biol.* 156: 703-713.
- Prag, S. and Adams, J.C. 2003. Molecular phylogeny of the kelch repeat superfamily reveals an expansion of BTB/kelch proteins in animals. *BMC Bioinformatics* 4: 42.
- Gorjánác, M., Török, I., Pomozi, I., Garab, G., Szlanka, T., Kiss, I. and Mechler, B.M. 2006. Domains of Importin- α 2 required for ring canal assembly during *Drosophila* oogenesis. *J. Struct. Biol.* 154: 27-41.

CHROMOSOMAL LOCATION

Genetic locus: KLHL24 (human) mapping to 3q27.1; Klhl24 (mouse) mapping to 16 A3.

SOURCE

KLHL24 (N-18) is an affinity purified goat polyclonal antibody raised against a peptide mapping at the N-terminus of KLHL24 of human origin.

STORAGE

Store at 4° C, ****DO NOT FREEZE****. Stable for one year from the date of shipment. Non-hazardous. No MSDS required.

PRODUCT

Each vial contains 200 μ g IgG in 1.0 ml of PBS with < 0.1% sodium azide and 0.1% gelatin.

Blocking peptide available for competition studies, sc-102646 P, (100 μ g peptide in 0.5 ml PBS containing < 0.1% sodium azide and 0.2% BSA).

APPLICATIONS

KLHL24 (N-18) is recommended for detection of KLHL24 of mouse, rat and human origin by Western Blotting (starting dilution 1:200, dilution range 1:100-1:1000), immunoprecipitation [1-2 μ g per 100-500 μ g of total protein (1 ml of cell lysate)], immunofluorescence (starting dilution 1:50, dilution range 1:50-1:500) and solid phase ELISA (starting dilution 1:30, dilution range 1:30-1:3000); non cross-reactive with other KLHL family members.

KLHL24 (N-18) is also recommended for detection of KLHL24 in additional species, including equine, canine, bovine, porcine and avian.

Suitable for use as control antibody for KLHL24 siRNA (h): sc-78496, KLHL24 siRNA (m): sc-146524, KLHL24 shRNA Plasmid (h): sc-78496-SH, KLHL24 shRNA Plasmid (m): sc-146524-SH, KLHL24 shRNA (h) Lentiviral Particles: sc-78496-V and KLHL24 shRNA (m) Lentiviral Particles: sc-146524-V.

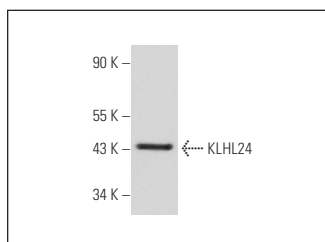
Molecular Weight of KLHL24 isoforms 1/2/3: 68/61/45 kDa.

Positive Controls: SW480 cell lysate: sc-2219.

RECOMMENDED SECONDARY REAGENTS

To ensure optimal results, the following support (secondary) reagents are recommended: 1) Western Blotting: use donkey anti-goat IgG-HRP: sc-2020 (dilution range: 1:2000-1:100,000) or Cruz Marker™ compatible donkey anti-goat IgG-HRP: sc-2033 (dilution range: 1:2000-1:5000), Cruz Marker™ Molecular Weight Standards: sc-2035, TBS Blotto A Blocking Reagent: sc-2333 and Western Blotting Luminol Reagent: sc-2048. 2) Immunoprecipitation: use Protein A/G PLUS-Agarose: sc-2003 (0.5 ml agarose/2.0 ml). 3) Immunofluorescence: use donkey anti-goat IgG-FITC: sc-2024 (dilution range: 1:100-1:400) or donkey anti-goat IgG-TR: sc-2783 (dilution range: 1:100-1:400) with UltraCruz™ Mounting Medium: sc-24941.

DATA



KLHL24 (N-18): sc-102646. Western blot analysis of KLHL24 expression in SW480 whole cell lysate.

RESEARCH USE

For research use only, not for use in diagnostic procedures.