

MCF2L2 (N-14): sc-103037

BACKGROUND

The Ras superfamily of GTPases, which can be subdivided into the Ras, Rho/Rac, Sar, Rab, ARF and Ran subfamilies, controls multiple aspects of cell function, including cytoskeletal rearrangement, nuclear signaling and cell growth. The Ras superfamily of GTPases function as regulated switches that toggle between a biologically active GTP-bound and an inactive GDP-bound form. This activation is catalyzed by guanine nucleotide exchange factors (GEFs). MCF2L2 (MCF.2 cell line derived transforming sequence-like 2), also known as DRG, is a 1,114 amino acid protein that contains one spectrin repeat, one PH domain, one DH domain and one CRAL-TRIO domain. Expressed at high levels in brain and also present in testis and pancreas, MCF2L2 is thought to function as a GEF, catalyzing the activation of target GTPases. Variations in the gene encoding MCF2L2 may be associated with an increased susceptibility to type 2 diabetes. Multiple isoforms of MCF2L2 exist due to alternative splicing events.

REFERENCES

- Nagase, T., Ishikawa, K., Suyama, M., Kikuno, R., Hirose, M., Miyajima, N., Tanaka, A., Kotani, H., Nomura, N. and Ohara, O. 1998. Prediction of the coding sequences of unidentified human genes. XII. The complete sequences of 100 new cDNA clones from brain which code for large proteins *in vitro*. DNA Res. 5: 355-364.
- Schmidt, A. and Hall, A. 2002. Guanine nucleotide exchange factors for Rho GTPases: turning on the switch. Genes Dev. 16: 1587-1609.
- Erickson, J.W. and Cerione, R.A. 2004. Structural elements, mechanism, and evolutionary convergence of Rho protein-guanine nucleotide exchange factor complexes. Biochemistry 43: 837-842.
- Ishimaru, S. and Hama, C. 2004. Guanine nucleotide exchange factors for Rho family GTPases: specific mediators for a variety of signals. Tanpakushitsu Kakusan Koso 49: 324-330.
- Das, S.K. and Elbein, S.C. 2007. The search for type 2 diabetes susceptibility loci: the chromosome 1q story. Curr. Diab. Rep. 7: 154-164.
- Takeuchi, F., Ochiai, Y., Serizawa, M., Yanai, K., Kuzuya, N., Kajio, H., Honjo, S., Takeda, N., Kaburagi, Y., Yasuda, K., Shirasawa, S., Sasazuki, T. and Kato, N. 2008. Search for type 2 diabetes susceptibility genes on chromosomes 1q, 3q and 12q. J. Hum. Genet. 53: 314-324.

CHROMOSOMAL LOCATION

Genetic locus: MCF2L2 (human) mapping to 3q27.1.

SOURCE

MCF2L2 (N-14) is an affinity purified rabbit polyclonal antibody raised against a peptide mapping at the N-terminus of MCF2L2 of human origin.

PRODUCT

Each vial contains 100 µg IgG in 1.0 ml of PBS with < 0.1% sodium azide and 0.1% gelatin.

Blocking peptide available for competition studies, sc-103037 P, (100 µg peptide in 0.5 ml PBS containing < 0.1% sodium azide and 0.2% BSA).

APPLICATIONS

MCF2L2 (N-14) is recommended for detection of MCF2L2 of human origin by Western Blotting (starting dilution 1:100, dilution range 1:50-1:500), immunoprecipitation [1-2 µg per 100-500 µg of total protein (1 ml of cell lysate)], immunofluorescence (starting dilution 1:25, dilution range 1:25-1:250) and solid phase ELISA (starting dilution 1:30, dilution range 1:30-1:3000).

Suitable for use as control antibody for MCF2L2 siRNA (h): sc-78088, MCF2L2 shRNA Plasmid (h): sc-78088-SH and MCF2L2 shRNA (h) Lentiviral Particles: sc-78088-V.

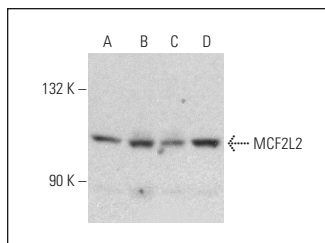
Molecular Weight of MCF2L2: 127 kDa.

Positive Controls: IMR-32 cell lysate: sc-2409, SH-SY5Y cell lysate: sc-3812 or NTERA-2 cl.D1 whole cell lysate: sc-364181.

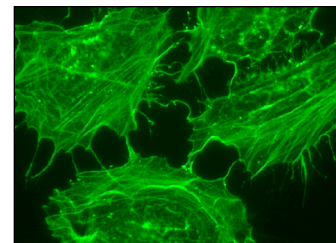
RECOMMENDED SECONDARY REAGENTS

To ensure optimal results, the following support (secondary) reagents are recommended: 1) Western Blotting: use goat anti-rabbit IgG-HRP: sc-2004 (dilution range: 1:2000-1:100,000) or Cruz Marker™ compatible goat anti-rabbit IgG-HRP: sc-2030 (dilution range: 1:2000-1:5000), Cruz Marker™ Molecular Weight Standards: sc-2035, TBS Blotto A Blocking Reagent: sc-2333 and Western Blotting Luminol Reagent: sc-2048. 2) Immunoprecipitation: use Protein A/G PLUS-Agarose: sc-2003 (0.5 ml agarose/2.0 ml). 3) Immunofluorescence: use goat anti-rabbit IgG-FITC: sc-2012 (dilution range: 1:100-1:400) or goat anti-rabbit IgG-TR: sc-2780 (dilution range: 1:100-1:400) with UltraCruz™ Mounting Medium: sc-24941.

DATA



MCF2L2 (N-14): sc-103037. Western blot analysis of MCF2L2 expression in MIA PaCa-2 (A), IMR-32 (B), SH-SY5Y (C) and NTERA-2 cl.D1 (D) whole cell lysates.



MCF2L2 (N-14): sc-103037. Immunofluorescence staining of methanol-fixed HeLa cells showing membrane localization.

STORAGE

Store at 4° C, **DO NOT FREEZE**. Stable for one year from the date of shipment. Non-hazardous. No MSDS required.

RESEARCH USE

For research use only, not for use in diagnostic procedures.

PROTOCOLS

See our web site at www.scbt.com or our catalog for detailed protocols and support products.