

MON1A (E-16): sc-103046

BACKGROUND

MON1A (MON1 homolog A), also known as SAND1, is a 555 amino acid protein that exists as multiple alternatively spliced isoforms and plays an important role in membrane trafficking, specifically through the secretory apparatus. The gene encoding MON1A maps to human chromosome 3, which houses over 1,100 genes, including a chemokine receptor (CKR) gene cluster and a variety of human cancer-related gene loci. Key tumor suppressing genes on chromosome 3 include those that encode the apoptosis mediator RASSF1, the cell migration regulator HYAL1 and the angiogenesis suppressor SEMA3B. Marfan syndrome, porphyria, von Hippel-Lindau syndrome, osteogenesis imperfecta and Charcot-Marie-Tooth disease are a few of the numerous genetic diseases associated with chromosome 3.

REFERENCES

- Müller, S., Stanyon, R., Finelli, P., Archidiacono, N. and Wienberg, J. 2000. Molecular cytogenetic dissection of human chromosomes 3 and 21 evolution. *Proc. Natl. Acad. Sci. USA* 97: 206-211.
- Braga, E.A., Kashuba, V.I., Maliukova, A.V., Loginov, V.I., Senchenko, V.N., Bazov, I.V., Kiselev, L.L. and Zabarovskii, E.R. 2003. New tumor suppressor genes in hot spots of human chromosome 3: new methods of identification. *Mol. Biol.* 37: 194-211.
- Tsend-Ayush, E., Grützner, F., Yue, Y., Grossmann, B., Hänsel, U., Sudbrak, R. and Haaf, T. 2004. Plasticity of human chromosome 3 during primate evolution. *Genomics* 83: 193-202.
- Yue, Y., Grossmann, B., Ferguson-Smith, M., Yang, F. and Haaf, T. 2005. Comparative cytogenetics of human chromosome 3q21.3 reveals a hot spot for ectopic recombination in hominoid evolution. *Genomics* 85: 36-47.
- Yue, Y., Grossmann, B., Tsend-Ayush, E., Grützner, F., Ferguson-Smith, M.A., Yang, F. and Haaf, T. 2005. Genomic structure and paralogous regions of the inversion breakpoint occurring between human chromosome 3p12.3 and orangutan chromosome 2. *Cytogenet. Genome Res.* 108: 98-105.
- Darai, E., Kost-Alimova, M., Kiss, H., Kansoul, H., Klein, G. and Imreh, S. 2005. Evolutionarily plastic regions at human 3p21.3 coincide with tumor breakpoints identified by the "elimination test". *Genomics* 86: 1-12.
- Wang, F., Paradkar, P.N., Custodio, A.O., McVey Ward, D., Fleming, M.D., Campagna, D., Roberts, K.A., Boyartchuk, V., Dietrich, W.F., Kaplan, J. and Andrews, N.C. 2007. Genetic variation in *Mon1a* affects protein trafficking and modifies macrophage iron loading in mice. *Nat. Genet.* 39: 1025-1032.
- Nareyck, G., Zeschmick, M., Prescher, G., Lohmann, D.R. and Anastassiou, G. 2006. Establishment and characterization of two uveal melanoma cell lines derived from tumors with loss of one chromosome 3. *Exp. Eye Res.* 83: 858-864.
- Online Mendelian Inheritance in Man, OMIM[™]. 2007. Johns Hopkins University, Baltimore, MD. MIM Number: 611464. World Wide Web URL: <http://www.ncbi.nlm.nih.gov/omim/>

CHROMOSOMAL LOCATION

Genetic locus: MON1A (human) mapping to 3p21.31.

SOURCE

MON1A (E-16) is an affinity purified goat polyclonal antibody raised against a peptide mapping near the N-terminus of MON1A of human origin.

PRODUCT

Each vial contains 200 µg IgG in 1.0 ml of PBS with < 0.1% sodium azide and 0.1% gelatin.

Blocking peptide available for competition studies, sc-103046 P, (100 µg peptide in 0.5 ml PBS containing < 0.1% sodium azide and 0.2% BSA).

APPLICATIONS

MON1A (E-16) is recommended for detection of MON1A of human origin by Western Blotting (starting dilution 1:200, dilution range 1:100-1:1000, immunoprecipitation [1-2 µg per 100-500 µg of total protein (1 ml of cell lysate)], immunofluorescence (starting dilution 1:50, dilution range 1:50-1:500) and solid phase ELISA (starting dilution 1:30, dilution range 1:30-1:3000); non cross-reactive with family member MON1B.

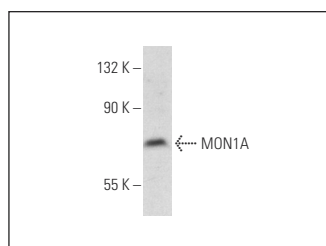
MON1A (E-16) is also recommended for detection of MON1A in additional species, including equine, canine, bovine and porcine.

Suitable for use as control antibody for MON1A siRNA (h): sc-78219, MON1A shRNA Plasmid (h): sc-78219-SH and MON1A shRNA (h) Lentiviral Particles: sc-78219-V.

Molecular Weight of MON1A: 65 kDa.

Positive Controls: Jurkat whole cell lysate: sc-2204 or IMR-32 cell lysate: sc-2409.

DATA



MON1A (E-16): sc-103046. Western blot analysis of MON1A expression in Jurkat whole cell lysate.

STORAGE

Store at 4° C, ****DO NOT FREEZE****. Stable for one year from the date of shipment. Non-hazardous. No MSDS required.

RESEARCH USE

For research use only, not for use in diagnostic procedures.

PROTOCOLS

See our web site at www.scbt.com or our catalog for detailed protocols and support products.