

Ribosomal Protein L29 (C-12): sc-103164

BACKGROUND

Ribosomes, the organelles that catalyze protein synthesis, are composed of a small subunit (40S) and a large subunit (60S) that consist of over 80 distinct ribosomal proteins. Mammalian ribosomal proteins are encoded by multigene families that contain processed pseudogenes and one functional intron-containing gene within their coding regions. Ribosomal Protein L29 (RPL29), also known as HIP, 60S Ribosomal Protein L29, cell surface heparin-binding protein, HUMRPL29 or MGC88589, is a 159 amino acid cytoplasmic ribosomal protein that is a component of the 60S subunit. Ribosomal Protein L29 belongs to the L29e family of ribosomal proteins and is found in glandular and luminal epithelium of normal human endometrium. Ribosomal Protein L29 also functions as a peripheral membrane protein found on the cell surface and binds heparin. Like most ribosomal proteins, Ribosomal Protein L29 exists as multiple processed pseudogenes that are scattered throughout the genome.

REFERENCES

1. Law, P.T., et al. 1996. A novel cDNA encoding a human homologue of Ribosomal Protein L29. *Biochim. Biophys. Acta* 1305: 105-108.
2. Liu, S., et al. 1996. cDNA cloning and expression of HIP, a novel cell surface heparan sulfate/heparin-binding protein of human uterine epithelial cells and cell lines. *J. Biol. Chem.* 271: 11817-11823.
3. Rohde, L.H., et al. 1996. Cell surface expression of HIP, a novel heparin/heparan sulfate binding protein, of human uterine epithelial cells and cell lines. *J. Biol. Chem.* 271: 11824-11830.
4. Garcia-Barcelo, M., et al. 1997. Mapping of the human ribosomal large subunit protein gene RPL29 to human chromosome 3q29-qter. *Genomics* 46: 148-151.
5. Kirn-Safran, C.B., et al. 2000. Cloning, expression, and chromosome mapping of the murine Hip/Rpl29 gene. *Genomics* 68: 210-219.

CHROMOSOMAL LOCATION

Genetic locus: RPL29 (human) mapping to 3p21.2.

SOURCE

Ribosomal Protein L29 (C-12) is an affinity purified goat polyclonal antibody raised against a peptide mapping at the C-terminus of Ribosomal Protein L29 of human origin.

PRODUCT

Each vial contains 200 µg IgG in 1.0 ml of PBS with < 0.1% sodium azide and 0.1% gelatin.

Blocking peptide available for competition studies, sc-103164 P, (100 µg peptide in 0.5 ml PBS containing < 0.1% sodium azide and 0.2% BSA).

STORAGE

Store at 4° C, ****DO NOT FREEZE****. Stable for one year from the date of shipment. Non-hazardous. No MSDS required.

APPLICATIONS

Ribosomal Protein L29 (C-12) is recommended for detection of Ribosomal Protein L29 of human origin by Western Blotting (starting dilution 1:200, dilution range 1:100-1:1000), immunoprecipitation [1-2 µg per 100-500 µg of total protein (1 ml of cell lysate)], immunofluorescence (starting dilution 1:50, dilution range 1:50-1:500) and solid phase ELISA (starting dilution 1:30, dilution range 1:30-1:3000); may cross-react with LOC284064.

Suitable for use as control antibody for Ribosomal Protein L29 siRNA (h): sc-78091, Ribosomal Protein L29 shRNA Plasmid (h): sc-78091-SH and Ribosomal Protein L29 shRNA (h) Lentiviral Particles: sc-78091-V.

Molecular Weight (predicted) of Ribosomal Protein L29: 17 kDa.

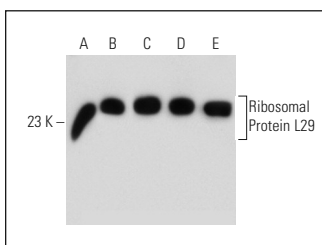
Molecular Weight (observed) of Ribosomal Protein L29: 17/24 kDa.

Positive Controls: AN3 CA cell lysate: sc-24662, K-562 whole cell lysate: sc-2203 or HL-60 whole cell lysate: sc-2209.

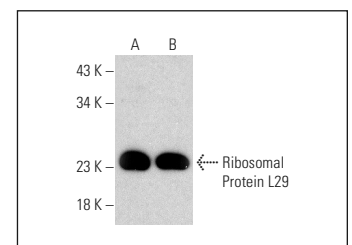
RECOMMENDED SECONDARY REAGENTS

To ensure optimal results, the following support (secondary) reagents are recommended: 1) Western Blotting: use donkey anti-goat IgG-HRP: sc-2020 (dilution range: 1:2000-1:100,000) or Cruz Marker™ compatible donkey anti-goat IgG-HRP: sc-2033 (dilution range: 1:2000-1:5000), Cruz Marker™ Molecular Weight Standards: sc-2035, TBS Blotto A Blocking Reagent: sc-2333 and Western Blotting Luminol Reagent: sc-2048. 2) Immunoprecipitation: use Protein A/G PLUS-Agarose: sc-2003 (0.5 ml agarose/2.0 ml). 3) Immunofluorescence: use donkey anti-goat IgG-FITC: sc-2024 (dilution range: 1:100-1:400) or donkey anti-goat IgG-TR: sc-2783 (dilution range: 1:100-1:400) with UltraCruz™ Mounting Medium: sc-24941.

DATA



Ribosomal Protein L29 (C-12): sc-103164. Western blot analysis of Ribosomal Protein L29 expression in HeLa (A), AN3 CA (B), JEG-3 (C), K-562 (D) and HL-60 (E) whole cell lysates.



Ribosomal Protein L29 (C-12): sc-103164. Western blot analysis of RPL29 expression in HeLa (A) and HeLa.92.1.7 (B) whole cell lysates.

RESEARCH USE

For research use only, not for use in diagnostic procedures.

PROTOCOLS

See our web site at www.scbt.com or our catalog for detailed protocols and support products.