

# SLC35A5 (N-12): sc-103227

## BACKGROUND

SLC35A5 (solute carrier family 35, member A5) is a 424 amino acid multi-pass membrane protein belonging to the nucleotide-sugar transporter family and the SLC35A subfamily. The gene that encodes SLC35A5 contains 21,496 bases and maps to human chromosome 3q13.2. As one of the largest human chromosomes, human chromosome 3 has the lowest rate of segmental duplication in the genome. It also contains a chemokine receptor gene group as well as a number of loci involved in multiple human cancers. 8.8 genes per Mb is the average gene density for chromosome 3, making it one of the more gene-poor chromosomes. Although the average gene density is low, the genes that make up chromosome 3 are larger than average and make up about 49% of the chromosome. A 13.6-cM region on 3p21.31-21.2, where a tumor suppressor gene cluster is located, is believed to be a novel locus for nasopharyngeal carcinoma.

## REFERENCES

- Braga, E.A., Kashuba, V.I., Maliukova, A.V., Loginov, V.I., Senchenko, V.N., Bazov, I.V., Kiselev, L.L. and Zabarovski, E.R. 2003. New tumor suppressor genes in hot spots of human chromosome 3: new methods of identification. *Mol. Biol.* 37: 194-211.
- Xiong, W., Zeng, Z.Y., Xia, J.H., Xia, K., Shen, S.R., Li, X.L., Hu, D.X., Tan, C., Xiang, J.J., Zhou, J., Deng, H., Fan, S.Q., Li, W.F., Wang, R., Zhou, M., Zhu, S.G., Lü, H.B., Qian, J., Zhang, B.C., Wang, J.R., Ma, J., et al. 2004. A susceptibility locus at chromosome 3p21 linked to familial nasopharyngeal carcinoma. *Cancer Res.* 64: 1972-1974.
- Jalkanen, J., Kotimäki, M., Huhtaniemi, I. and Poutanen, M. 2006. Novel epididymal protease inhibitors with Kazal or WAP family domain. *Biochem. Biophys. Res. Commun.* 349: 245-254.
- Zeng, Z., Zhou, Y., Zhang, W., Li, X., Xiong, W., Liu, H., Fan, S., Qian, J., Wang, L., Li, Z., Shen, S. and Li, G. 2006. Family-based association analysis validates chromosome 3p21 as a putative nasopharyngeal carcinoma susceptibility locus. *Genet. Med.* 8: 156-160.
- Muzny, D.M., Scherer, S.E., Kaul, R., Wang, J., Yu, J., Sudbrak, R., Buhay, C.J., Chen, R., Cree, A., Ding, Y., Dugan-Rocha, S., Gill, R., Gunaratne, P., Harris, R.A., Hawes, A.C., Hernandez, J., Hodgson, A.V., Hume, J., et al. 2006. The DNA sequence, annotation and analysis of human chromosome 3. *Nature* 440: 1194-1198.
- Wapenaar, M.C., Monsuur, A.J., Poell, J., van 't Slot, R., Meijer, J.W., Meijer, G.A., Mulder, C.J., Mearin, M.L. and Wijmenga, C. 2007. The SPINK gene family and celiac disease susceptibility. *Immunogenetics.* 59: 349-357.
- Cesari, A., Monclus, M.d.e. L., Tejón, G.P., Clementi, M. and Fornes, M.W. 2010. Regulated serine proteinase lytic system on mammalian sperm surface: there must be a role. *Theriogenology* 74: 699-711.e1.

## STORAGE

Store at 4° C, **\*\*DO NOT FREEZE\*\***. Stable for one year from the date of shipment. Non-hazardous. No MSDS required.

## CHROMOSOMAL LOCATION

Genetic locus: SLC35A5 (human) mapping to 3q13.2; Slc35a5 (mouse) mapping to 16 B5.

## SOURCE

SLC35A5 (N-12) is an affinity purified rabbit polyclonal antibody raised against a peptide mapping within an internal region of SLC35A5 of human origin.

## PRODUCT

Each vial contains 100 µg IgG in 1.0 ml of PBS with < 0.1% sodium azide and 0.1% gelatin.

Blocking peptide available for competition studies, sc-103227 P, (100 µg peptide in 0.5 ml PBS containing < 0.1% sodium azide and 0.2% BSA).

## APPLICATIONS

SLC35A5 (N-12) is recommended for detection of SLC35A5 of mouse, rat and human origin by Western Blotting (starting dilution 1:200, dilution range 1:100-1:1000), immunoprecipitation [1-2 µg per 100-500 µg of total protein (1 ml of cell lysate)], immunofluorescence (starting dilution 1:50, dilution range 1:50-1:500) and solid phase ELISA (starting dilution 1:30, dilution range 1:30-1:3000).

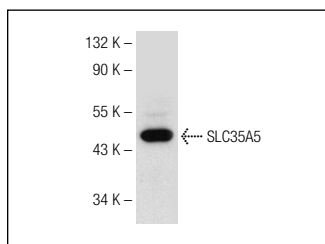
SLC35A5 (N-12) is also recommended for detection of SLC35A5 in additional species, including equine, canine, bovine and avian.

Suitable for use as control antibody for SLC35A5 siRNA (h): sc-78390, SLC35A5 siRNA (m): sc-153531, SLC35A5 shRNA Plasmid (h): sc-78390-SH, SLC35A5 shRNA Plasmid (m): sc-153531-SH, SLC35A5 shRNA (h) Lentiviral Particles: sc-78390-V and SLC35A5 shRNA (m) Lentiviral Particles: sc-153531-V.

Molecular Weight of SLC35A5: 49 kDa.

Positive Controls: rat skeletal muscle tissue extract.

## DATA



SLC35A5 (N-12): sc-103227. Western blot analysis of SLC35A5 expression in rat skeletal muscle tissue extract.

## RESEARCH USE

For research use only, not for use in diagnostic procedures.