

TMCC1 (K-13): sc-103273

BACKGROUND

TMCC1 (transmembrane and coiled-coil domains protein 1) is a 653 amino acid multi-pass membrane protein that belongs to the TEX28 family. The gene encoding TMCC1 maps to human chromosome 3, which houses over 1,100 genes, including a chemokine receptor (CKR) gene cluster and a variety of human cancer-related gene loci. Key tumor suppressing genes on chromosome 3 include those that encode the apoptosis mediator RASSF1, the cell migration regulator HYAL1 and the angiogenesis suppressor SEMA3B. Marfan Syndrome, porphyria, von Hippel-Lindau syndrome, osteogenesis imperfecta and Charcot-Marie-Tooth disease are a few of the numerous genetic diseases associated with chromosome 3.

REFERENCES

- Hanna, M.C., et al. 1997. Identification of a gene within the tandem array of red and green color pigment genes. *Genomics* 43: 384-386.
- Braga, E.A., et al. 2003. New tumor suppressor genes in hot spots of human chromosome 3: new methods of identification. *Mol. Biol.* 37: 194-211.
- Tsend-Ayush, E., et al. 2004. Plasticity of human chromosome 3 during primate evolution. *Genomics* 83: 193-202.
- Darai, E., et al. 2005. Evolutionarily plastic regions at human 3p21.3 coincide with tumor breakpoints identified by the "elimination test". *Genomics* 86: 1-12.
- Olsen, J.V., et al. 2006. Global, *in vivo*, and site-specific phosphorylation dynamics in signaling networks. *Cell* 127: 635-648.
- Michielse, C.B., et al. 2006. Refinement of the locus for hereditary congenital facial palsy on chromosome 3q21 in two unrelated families and screening of positional candidate genes. *Eur. J. Hum. Genet.* 14: 1306-1312.
- Muzny, D.M., et al. 2006. The DNA sequence, annotation and analysis of human chromosome 3. *Nature* 440: 1194-1198.

CHROMOSOMAL LOCATION

Genetic locus: TMCC1 (human) mapping to 3q22.1; Tmcc1 (mouse) mapping to 6 E3.

SOURCE

TMCC1 (K-13) is an affinity purified goat polyclonal antibody raised against a peptide mapping within an internal region of TMCC1 of human origin.

PRODUCT

Each vial contains 200 µg IgG in 1.0 ml of PBS with < 0.1% sodium azide and 0.1% gelatin.

Blocking peptide available for competition studies, sc-103273 P, (100 µg peptide in 0.5 ml PBS containing < 0.1% sodium azide and 0.2% BSA).

RESEARCH USE

For research use only, not for use in diagnostic procedures.

APPLICATIONS

TMCC1 (K-13) is recommended for detection of TMCC1 of mouse, rat and human origin by Western Blotting (starting dilution 1:200, dilution range 1:100-1:1000), immunoprecipitation [1-2 µg per 100-500 µg of total protein (1 ml of cell lysate)], immunofluorescence (starting dilution 1:50, dilution range 1:50-1:500) and solid phase ELISA (starting dilution 1:30, dilution range 1:30-1:3000); non cross-reactive with family members TMCC2 or TMCC3.

TMCC1 (K-13) is also recommended for detection of TMCC1 in additional species, including equine, canine, bovine, porcine and avian.

Suitable for use as control antibody for TMCC1 siRNA (h): sc-77984, TMCC1 siRNA (m): sc-154321, TMCC1 shRNA Plasmid (h): sc-77984-SH, TMCC1 shRNA Plasmid (m): sc-154321-SH, TMCC1 shRNA (h) Lentiviral Particles: sc-77984-V and TMCC1 shRNA (m) Lentiviral Particles: sc-154321-V.

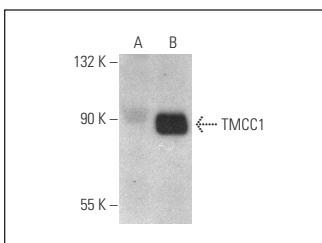
Molecular Weight of TMCC1: 72 kDa.

Positive Controls: TMCC1 (h2): 293T lysate: sc-115830.

RECOMMENDED SECONDARY REAGENTS

To ensure optimal results, the following support (secondary) reagents are recommended: 1) Western Blotting: use donkey anti-goat IgG-HRP: sc-2020 (dilution range: 1:2000-1:100,000) or Cruz Marker™ compatible donkey anti-goat IgG-HRP: sc-2033 (dilution range: 1:2000-1:5000), Cruz Marker™ Molecular Weight Standards: sc-2035, TBS Blotto A Blocking Reagent: sc-2333 and Western Blotting Luminol Reagent: sc-2048. 2) Immunoprecipitation: use Protein A/G PLUS-Agarose: sc-2003 (0.5 ml agarose/2.0 ml). 3) Immunofluorescence: use donkey anti-goat IgG-FITC: sc-2024 (dilution range: 1:100-1:400) or donkey anti-goat IgG-TR: sc-2783 (dilution range: 1:100-1:400) with UltraCruz™ Mounting Medium: sc-24941.

DATA



TMCC1 (K-13): sc-103273. Western blot analysis of TMCC1 expression in non-transfected: sc-117752 (A) and human TMCC1 transfected: sc-115830 (B) 293T whole cell lysates.

STORAGE

Store at 4° C, **DO NOT FREEZE**. Stable for one year from the date of shipment. Non-hazardous. No MSDS required.

PROTOCOLS

See our web site at www.scbt.com or our catalog for detailed protocols and support products.