

# ZPLD1 (P-19): sc-103363

## BACKGROUND

Many proteins containing ZP (zona pellucida) domains play fundamental roles in development, immunity, hearing and cancer. These domains are located near the carboxy-terminus of the polypeptide and typically consist of approximately 260 amino acids. ZP domain-containing proteins are often glycosylated and are usually present in filaments or matrices and therefore are thought to be involved in protein polymerization. ZPLD1 (zona pellucida-like domain-containing protein 1) is a 415 amino acid single-pass transmembrane protein that contains one ZP domain. The gene encoding ZPLD1 maps to human chromosome 3, which is made up of about 214 million bases encoding over 1,100 genes, including a chemokine receptor (CKR) gene cluster and a variety of human cancer-related gene loci. There are two isoforms of ZPLD1 that are produced as a result of alternative splicing events.

## REFERENCES

- Jovine, L., Qi, H., Williams, Z., Litscher, E. and Wassarman, P.M. 2002. The ZP domain is a conserved module for polymerization of extracellular proteins. *Nat. Cell Biol.* 4: 457-461.
- Wassarman, P.M., Jovine, L. and Litscher, E.S. 2004. Mouse zona pellucida genes and glycoproteins. *Cytogenet. Genome Res.* 105: 228-234.
- Jovine, L., Qi, H., Williams, Z., Litscher, E.S. and Wassarman, P.M. 2004. A duplicated motif controls assembly of zona pellucida domain proteins. *Proc. Natl. Acad. Sci. USA* 101: 5922-5927.
- Jovine, L., Darie, C.C., Litscher, E.S. and Wassarman, P.M. 2005. Zona pellucida domain proteins. *Annu. Rev. Biochem.* 74: 83-114.
- Monne, M., Han, L. and Jovine, L. 2006. Tracking down the ZP domain: From the mammalian zona pellucida to the molluscan vitelline envelope. *Semin. Reprod. Med.* 24: 204-216.
- Jovine, L., Qi, H., Williams, Z., Litscher, E.S. and Wassarman, P.M. 2007. Features that affect secretion and assembly of zona pellucida glycoproteins during mammalian oogenesis. *Soc. Reprod. Fertil. Suppl.* 63: 187-201.
- Gupta, S.K., Chakravarty, S., Suraj, K., Bansal, P., Ganguly, A., Jain, M.K. and Bhandari, B. 2007. Structural and functional attributes of zona pellucida glycoproteins. *Soc. Reprod. Fertil. Suppl.* 63: 203-216.
- Gianfrancesco, F., Esposito, T., Penco, S., Maglione, V., Liquori, C.L., Patrosso, M.C., Zuffardi, O., Ciccociola, A., Marchuk, D.A. and Squitieri, F. 2008. ZPLD1 gene is disrupted in a patient with balanced translocation that exhibits cerebral cavernous malformations. *Neuroscience* 155: 345-349.
- Izquierdo-Rico, M.J., Jimenez-Movilla, M., Llop, E., Perez-Oliva, A.B., Ballesta, J., Gutierrez-Gallego, R., Jimenez-Cervantes, C. and Aviles, M. 2009. Hamster zona pellucida is formed by four glycoproteins: ZP1, ZP2, ZP3, and ZP4. *J. Proteome Res.* 8: 926-941.

## CHROMOSOMAL LOCATION

Genetic locus: ZPLD1 (human) mapping to 3q12.3; Zpld1 (mouse) mapping to 16 C1.1.

## SOURCE

ZPLD1 (P-19) is an affinity purified goat polyclonal antibody raised against a peptide mapping within an extracellular domain of ZPLD1 of human origin.

## PRODUCT

Each vial contains 200 µg IgG in 1.0 ml of PBS with < 0.1% sodium azide and 0.1% gelatin.

Blocking peptide available for competition studies, sc-103363 P, (100 µg peptide in 0.5 ml PBS containing < 0.1% sodium azide and 0.2% BSA).

## APPLICATIONS

ZPLD1 (P-19) is recommended for detection of ZPLD1 of mouse, rat and human origin by Western Blotting (starting dilution 1:200, dilution range 1:100-1:1000), immunoprecipitation [1-2 µg per 100-500 µg of total protein (1 ml of cell lysate)], immunofluorescence (starting dilution 1:50, dilution range 1:50-1:500) and solid phase ELISA (starting dilution 1:30, dilution range 1:30-1:3000).

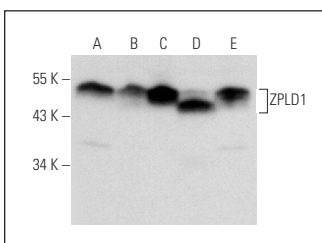
ZPLD1 (P-19) is also recommended for detection of ZPLD1 in additional species, including equine, canine, bovine, porcine and avian.

Suitable for use as control antibody for ZPLD1 siRNA (h): sc-78484, ZPLD1 siRNA (m): sc-155828, ZPLD1 shRNA Plasmid (h): sc-78484-SH, ZPLD1 shRNA Plasmid (m): sc-155828-SH, ZPLD1 shRNA (h) Lentiviral Particles: sc-78484-V and ZPLD1 shRNA (m) Lentiviral Particles: sc-155828-V.

Molecular Weight of ZPLD1: 46 kDa.

Positive Controls: HeLa whole cell lysate: sc-2200, Jurkat whole cell lysate: sc-2204 or MCF7 whole cell lysate: sc-2206.

## DATA



ZPLD1 (P-19): sc-103363. Western blot analysis of ZPLD1 expression in HeLa (A), PC-3 (B), Jurkat (C), MCF7 (D) and SK-N-SH (E) whole cell lysates.

## STORAGE

Store at 4° C, **\*\*DO NOT FREEZE\*\***. Stable for one year from the date of shipment. Non-hazardous. No MSDS required.

## RESEARCH USE

For research use only, not for use in diagnostic procedures.